

INSTALLATION INSTRUCTIONS FOR MODEL 320310 BRACKET KIT

SAFETY MESSAGE TO INSTALLERS

People's lives depend on your safe installation of our products. It is important to read, understand and follow all instructions shipped with the products. In addition, listed below are some other important safety instructions and precautions you should follow:

- To properly install a light assembly, you must have a good understanding of automotive electrical procedures and systems, along with proficiency in the installation and use of safety warning equipment.
- When drilling into a vehicle structure, be sure that both sides of the surface are clear of anything that could be damaged.
- Inspect the mounting system periodically to ensure it is in good condition.
- Refer to instruction sheet packed with light for proper electrical connections.
- File these instructions in a safe place and refer to them when maintaining and/or reinstalling the product.

Failure to follow all safety precautions and instructions may result in property damage, serious injury, or death to you or others.

A. GENERAL.

The Model 320310 is a mounting kit designed for mounting SignalMaster™ Models SML6/SML8, or SIGM6/SIGM8, on a flat surface. The mounting brackets provide clearance for cabling exiting the SignalMaster units.

B. UNPACKING.

After unpacking the kit, carefully check all envelopes, shipping labels, and tags before removing or destroying them. Ensure that the parts listed in the KIT CONTENTS LIST are contained in the packing carton.

C. KIT CONTENTS LIST.

Qty.	Description	Part Number
4	Screw, Hex Hd., 1/4-20 x 1/2"	7011164-08
2	Bracket, Flush Mount	8573114
4	Lockwasher, Split, 1/4"	7074A016
4	Nut, Hex, 1/4-20, SS	7059A020

D. INSTALLATION.

Before proceeding with installation, plan all cable routing.

1. For Models SML6/SML8, see Figure 1. Assemble the brackets on the light assembly using the 1/4" split lockwashers and nuts.

For Models SIGM6/SIGM8, see Figure 1. Assemble the brackets on the light assembly using the hex head screws.

2. See Figure 2. Position the assembled unit on the mounting surface. Ensure that it is level side-to-side. Using the brackets as a template, scribe mounting hole locations on the mounting surface. Also, scribe a cable routing hole location on the mounting surface.

CAUTION

Before drilling holes in ANY part of a vehicle, be sure that both sides of the mounting surface are clear of parts that could be damaged, such as brake lines, fuel lines, electrical wiring or other vital parts.

3. Drill mounting holes and a cable routing hole at the previously scribed hole locations.

4. Route the cable and secure the light assembly to the mounting surface with user-supplied bolts (1/4-20 or larger bolts recommended).

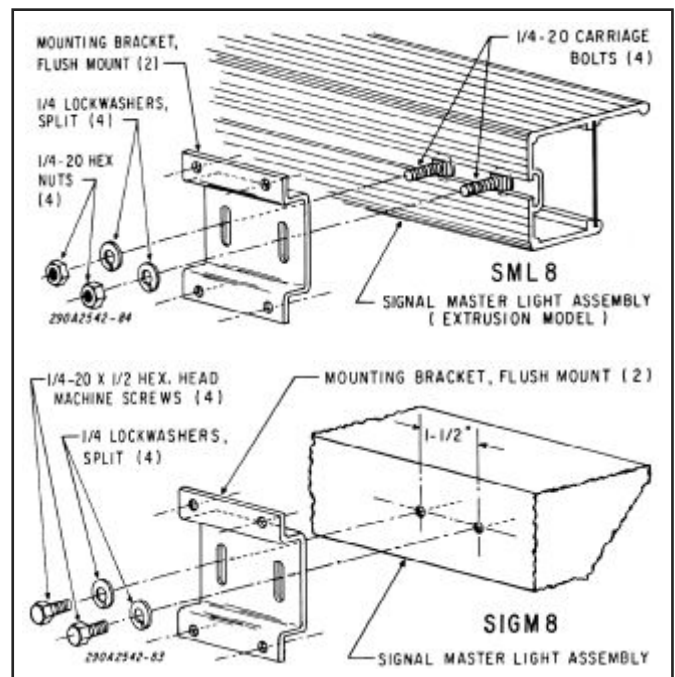


Figure 1.

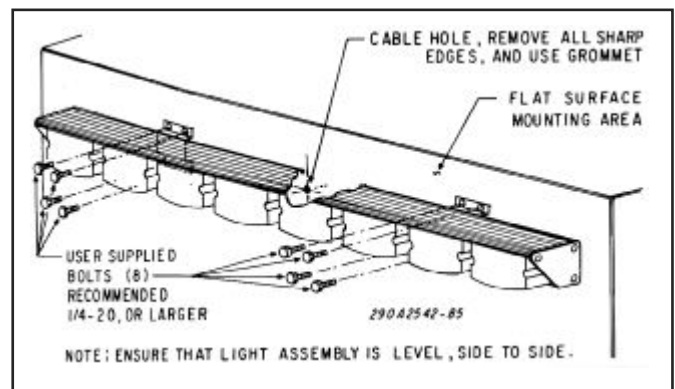


Figure 2.