

25500252 Rev. A1 1019

## **Safety Message to Installers and Service Personnel of Emergency Vehicle Safety Equipment**

### **⚠ WARNING**

People's lives depend on your proper installation and servicing of Federal Signal products. It is important to read and follow all instructions shipped with this product. Listed below are some other important safety instructions and precautions you should follow:

#### **Before Installation or Service**

##### *Qualifications*

- To properly install or service this equipment, you must have a good understanding of automotive electrical procedures and systems along with proficiency in the installation and service of safety warning equipment. Always refer to the vehicle service manuals when installing equipment on a vehicle.

##### *Electrical Hazards*

- Never attempt to install aftermarket equipment that connects to the vehicle wiring without reviewing a vehicle wiring diagram available from the vehicle manufacturer. Ensure that your installation will not affect vehicle operation and safety functions or circuits.

#### **During Installation or Service**

- To avoid a battery explosion, always disconnect the negative battery cable first and reconnect it last. Avoid a spark when connecting near or to the battery. The gasses produced by a battery can cause a battery explosion that could result in vehicle damage and serious injury.
- Do not install equipment or route wiring or a plug-in cord in the deployment path of an airbag.
- Before mounting any components, check the manual to be sure that the component you are installing is suitable for use in that area of the vehicle. Many components are not suitable for use in the engine compartment or in other areas subject to extreme environmental exposure.
- When drilling into a vehicle structure, be sure that both sides of the surface are clear of anything that could be damaged. Remove all burrs from drilled holes to prevent electrical shorts, grommet all drilled holes through which wiring passes. Also ensure that mounting screws do not cause electrical or mechanical damage to the vehicle.

#### **After Installation or Service**

- If a vehicle seat is temporarily removed, verify with vehicle manufacturer if the seat needs to be recalibrated for proper airbag deployment.
- To ensure proper operation, test all vehicle functions, including horn operation, vehicle safety functions, and vehicle light systems. Ensure that installation has not affected vehicle operation or changed any vehicle safety function or circuit.
- After installation and testing are complete, provide a copy of these instructions to instructional staff and all operating personnel.
- File these instructions in a safe place and refer to them when maintaining and/or reinstalling the product.

Failure to follow all safety precautions and instructions may result in property damage, serious injury, or death.

### Unpacking the Product

After unpacking the product, inspect it for damage that may have occurred in transit. If it has been damaged, do not attempt to install or operate it. File a claim immediately with the carrier, stating the extent of damage. **Failure to identify damage before installation could lead to rejection of any claim.** Carefully check all envelopes, shipping labels, and tags before removing or destroying them. Ensure that the parts listed in Table 1 are included in the package. If you are missing any parts, contact Federal Signal Customer Support at 1-800-264-3578, 7 a.m. to 5 p.m., Monday through Friday (CT).

Table 1 Parts list and tools needed

Item	Qty.	Description	Tools Needed
1	2	Rubber Molding (5 feet)	Tin Snips or Equivalent
			Silicon-Based Lubricant Spray
			Container of Hot Water or Heat Gun

### Installing the Rubber Molding

To install the molding:

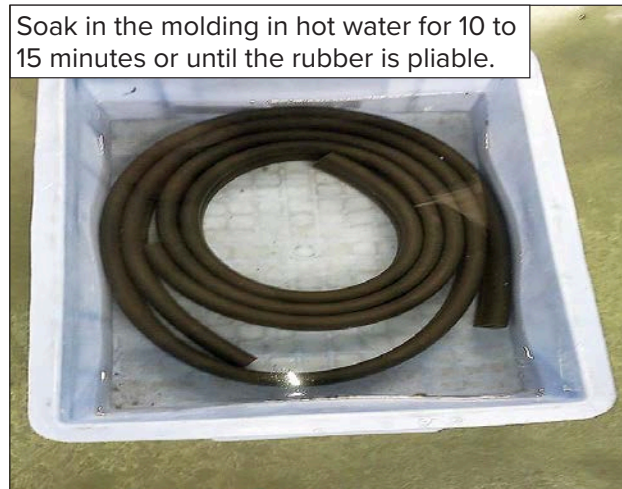
1. Fill a bucket or other container with enough hot tap-water to submerge one rubber molding (Figure 1). **Ensure that the temperature of the water is not enough to cause burns or scalding.**

**NOTE:** A heat gun can also be used. Heat the molding evenly until it is pliable. Do not burn or melt it.

Figure 1 Rubber molding



Figure 2 Molding soaked in water



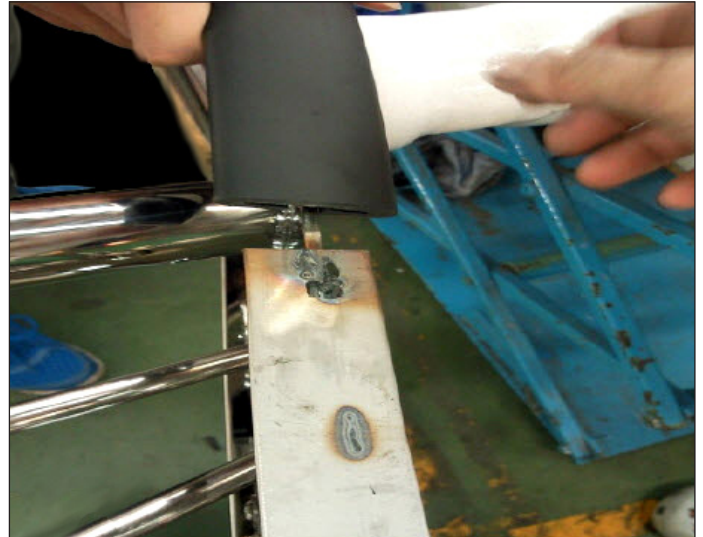
2. Place the rubber molding in the hot water for approximately 10 to 15 minutes (Figure 2).
3. When the rubber molding is pliable, remove it from the hot water. Wipe the channel dry.

4. To aid in the installation, spray one end of the molding in the U-shaped channel generously with the silicon-based spray lubricant. (Figure 3).
5. Slide the rubber molding onto the metal upright of the grille guard (Figure 4).

**Figure 3 Apply lubricant to ease installation**



**Figure 4 Slide the moldings onto the uprights**



6. After the rubber molding is completely installed, use tin snips to trim off any excess molding that is not needed to cover the uprights of the grille guard.
7. Repeat steps 1 through 6 for the second rubber molding.

**Figure 5 Installation complete**



### **Maintaining the Push Bar Assembly**

Regularly clean stainless steel and gloss black finishes with a mild soap and water. Apply a non-abrasive wax or polish. To polish small scratches on stainless steel, use stainless steel polish. To avoid making scratches on the stainless steel surfaces, follow the grain of the steel while polishing.

### **Getting Technical Support and Service**

For technical support, contact:

Federal Signal Corporation  
Service Department  
Phone: 1-800-433-9132  
Email: [empserviceinfo@fedsig.com](mailto:empserviceinfo@fedsig.com)

### **Getting Repair Service**

The Federal Signal factory provides technical assistance with any problems that cannot be handled locally. Any product returned to Federal Signal for service, inspection, or repair must be accompanied by a Return Material Authorization (RMA). Obtain a RMA from a local Distributor or Manufacturer's Representative. Provide a brief explanation of the service requested, or the nature of the malfunction.

Address all communications and shipments to the following:

Federal Signal Corporation  
Service Department  
2645 Federal Signal Dr.  
University Park, IL 60484-3167



2645 Federal Signal Drive  
University Park, Illinois 60484

[www.fedsig.com](http://www.fedsig.com)

Customer Support

Police/Fire-EMS: 800-264-3578 • +1 708 534-3400

Work Truck: 800-824-0254 • +1 708 534-3400

Technical Support 800-433-9132 • +1 708 534-3400

© Copyright 2015 - 2019 Federal Signal Corporation