

MicroPulse® Ultra

Exterior Mount/Perimeter Lights

FEATURES

- Superior warning with high-powered LEDs
- Low-profile design offers a wider range of mounting locations
- [25] Selectable flash patterns
- Clear and Smoked lens models available
- SpectraLux® multicolor LED technology in combinations of Amber, Blue, Green, Red and White
- FSLink™ allows for synchronization across multiple products
- FSJoin™ enables the synchronization and programming of light bars and exterior/interior lights that works in conjunction with the Pathfinder® Siren
- 12/24 Vdc
- Suitable for external and/or internal mounting applications
- Includes Black bezel and gasket, optional bezels available in Chrome or White
- Single/multi-unit synchronization
- Designed and assembled in University Park, IL USA
- Five-year warranty

APPROVALS

- SAE J845, Class 1 (Amber, Blue, Green, Red, and White)*
- NFPA 1901**
- CCR Title 13**
- GSA KKK-A-1822**
- R65**
- IP67 rated, moisture and dust proof

*SAE J845 for smoked lens models are Class 2 (Blue, Red, and White)

**Flash patterns meeting these specs are noted in the instruction manual

FS TECHNOLOGIES



Highly Effective, Ultra Slim Warning Light

MicroPulse® Ultra models have a low-profile design that offers a broader range of mounting options suitable for external and internal mounting applications. The advanced high-output LED light head can be programmed to operate as a single unit or synchronize with multiple light heads. Built-in flash patterns enable multiple vehicle perimeter lights to be either synchronized in the same pattern or opposite sequence.



MicroPulse Ultra is only 0.4-inches thick

Built to Stand Up to the Most Punishing Conditions

MicroPulse® Ultra lens is made of US resistant polycarbonate to protect against harsh conditions. Models include a fully encapsulated water-proof housing, which provides a barrier against moisture and condensation. All MicroPulse Ultra perimeter lights are backed by Federal Signal's five-year warranty.

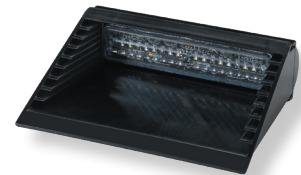
A Versatile Solution for any Warning Light Application

MicroPulse Ultra is available in single-, dual-, and tri-color combinations of Amber, Blue, Green, Red, and White. Models are standard with a Black bezel or available with a Chrome or White bezel, sold separately.

MicroPulse Ultra lights are available with either a Clear lens or a Smoked lens for a more low-profile operation. An adhesive mount kit (sold separately) allows for interior window mounting of a MicroPulse Ultra 6 light head in various positions.



MPS6U Smoked Lens Model



MPS6U light installed in MPSM6U-WIN adhesive mount kit

FSJoin™ Compatible

MicroPulse Ultra models are FSJoin™ compatible. FSJoin is a programming compatibility feature of Federal Signal's light bars and exterior/interior warning lights that work in conjunction with the Pathfinder® light/siren controller. When using FSJoin products, Pathfinder controls all of the vehicle's warning light flash patterns, dimming feature, and light head syncing/altering patterns.

Simplify programming of multiple FSJoin warning lights and light bars with FS Convergence Network Configuration Software.

Compatibility with Older MicroPulse® Ultra Models

- New MicroPulse Ultra models will not synchronize with older MicroPulse Ultra models.
- New MicroPulse Ultra models will synchronize with existing X Series models. This includes MicroPulse Ultra X Series, MicroPulse Wide Angle X Series, 416300 X Series, and 416900/416910 X Series models.

FSLink Compatible

MicroPulse Ultra models feature FSLink, a built-in software technology that incorporates a shared set of flash patterns within Federal Signal's LED perimeter lights, interior lights, and beacons. This shared flash pattern software allows the various products to be wired together, set in a common pattern and then synchronized together to flash simultaneously or alternately.

Wiring Diagram

FSLink products feature (5) programming wires. Wire functions are consistent across all FSLink products allowing for ease of programming.



WIRE	INTERNAL FLASHER MODE
RED	To +Vdc for Mode 1
WHITE	To +Vdc for Mode 2
BROWN	To +Vdc for Mode 3
GREEN	+Vdc for programming sync/FSLink
BLACK	To Chassis Ground

SPECIFICATIONS

LED Color

A B G R W

Lens Color

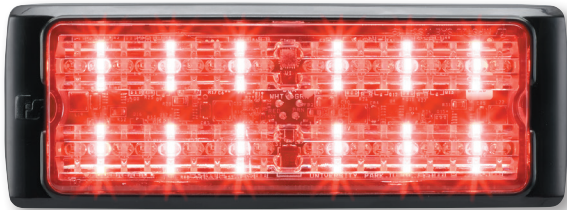
C S

	MPS3U	MPS6U	MPS12U
VOLTAGE		12/24 Vdc	
CURRENT DRAW @12 VDC	0.4 A	0.75 A	1.5 A
CURRENT DRAW @24 VDC, 50% FLASH RATE	0.2 A	0.4 A	0.75 A
OPERATING TEMP.		-40° to +176°F (-40° to +80°C)	
FUSE		2 A	
PHYSICAL SPECIFICATIONS			
LENGTH	3.5 in (8.8 cm)	5.2 in (13.2 cm)	5.3 in (13.5 cm)
WIDTH	0.4 in (1.0 cm)	0.4 in (1.0 cm)	0.4 in (1.0 cm)
HEIGHT	1.3 in (3.3 cm)	1.3 in (3.3 cm)	1.9 in (4.8 cm)
SHIP WEIGHT			
	0.1 lb (0.5 kg)	0.1 lb (0.1 kg)	0.2 lb (0.1 kg)

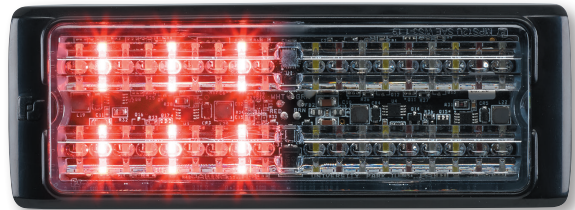
* Voltage, Current draw, and Amp draw based on a 50% flash rate for a fully populated light bar

Programming Features

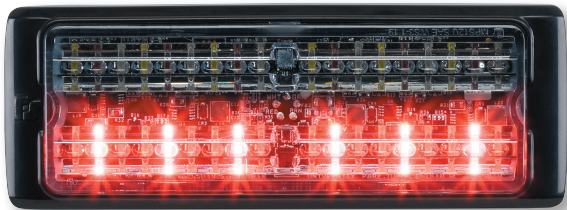
- (3) Programming modes
- (3) Brightness settings (full, dim, and cruise)
- FSLink compatibility to sync products simultaneously or alternately
- Flash color select
 - MPS3U can operate as a single- or dual-color light
 - MPS6U/MPS12U can operate as a single-, dual-, or tri-color light
- Color order select
- Split flash select
 - MPS3U = full flash
 - MPS6U = full flash and left/right
 - MPS12U = full flash, left/right, top/down, and criss-cross



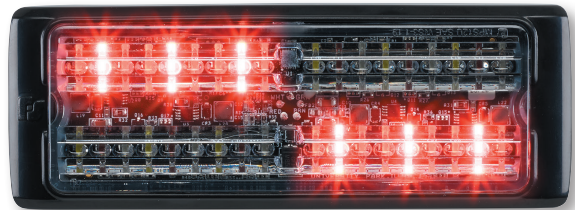
MPS123U full flash



MPS123U left/right



MPS123U top-down



MPS123U criss-cross

HOW TO ORDER

MICROPULSE ULTRA 3, SINGLE-COLOR, SURFACE MOUNT, 12/24 VDC, CLEAR LENS

MPS31U-A	3-LED light head, Amber
MPS31U-B	3-LED light head, Blue
MPS31U-R	3-LED light head, Red
MPS31U-W	3-LED light head, White

MICROPULSE ULTRA 3, DUAL-COLOR, SURFACE MOUNT, 12/24 VDC, CLEAR LENS

MPS32U-RB	6-LED light head, Red/Blue
MPS32U-BW	6-LED light head, Blue/White
MPS32U-AW	6-LED light head, Amber/White
MPS32U-RW	6-LED light head, Red/White
MPS32U-BA	6-LED light head, Blue/Amber
MPS32U-RA	6-LED light head, Red/Amber
MPS32U-AG	6-LED light head, Amber/Green

MICROPULSE ULTRA 3, DUAL-COLOR, STEADY BURN, SURFACE MOUNT, 12/24 VDC, SMOKED LENS

MPS32UX-RB-SMK	6-LED light head, Red/Blue
MPS32UX-BW-SMK	6-LED light head, Blue/White
MPS32UX-RW-SMK	6-LED light head, Red/White

MICROPULSE ULTRA 6, SINGLE-COLOR, SURFACE MOUNT, 12/24 VDC, CLEAR LENS

MPS61U-A	6-LED light head, Amber
MPS61U-B	6-LED light head, Blue
MPS61U-R	6-LED light head, Red
MPS61U-W	6-LED light head, White

MICROPULSE ULTRA 6, DUAL-COLOR, SURFACE MOUNT, 12/24 VDC, CLEAR LENS

MPS62U-AW	12-LED light head, Amber/White
MPS62U-RB	12-LED light head, Red/Blue
MPS62U-BA	12-LED light head, Blue/Amber
MPS62U-BW	12-LED light head, Blue/White
MPS62U-RW	12-LED light head, Red/White

MICROPULSE ULTRA 6, TRI-COLOR, SURFACE MOUNT, 12/24 VDC, CLEAR LENS

MPS63U-RBW	18-LED light head, Red/Blue/White
MPS63U-BAW	18-LED light head, Blue/Amber/White
MPS63U-RBA	18-LED light head Red/Blue/Amber
MPS63U-RAW	18-LED light head, Red/Amber/White
MPS63U-AGW	18-LED light head, Amber/Green/White

MICROPULSE ULTRA 6, TRI-COLOR, STEADY BURN, SURFACE MOUNT, 12/24 VDC, SMOKED LENS

MPS63UX-RBW-SMK	18-LED light head, Red/Blue/White
-----------------	-----------------------------------

MICROPLULSE ULTRA 6, TRI-COLOR, SURFACE MOUNT, 12/24 VDC, CLEAR LENS, 8-FT, (243.8 CM) CABLE

MPS63U-8FT-RBW	18-LED light head, Red/Blue/White
----------------	-----------------------------------

MICROPULSE ULTRA 12, SINGLE-COLOR, SURFACE MOUNT, 12/24 VDC, CLEAR LENS

MPS121U-A	12-LED light head, Amber
MPS121U-R	12-LED light head, Red

MICROPULSE ULTRA 12, DUAL-COLOR, SURFACE MOUNT, 12/24 VDC, CLEAR LENS

MPS122U-BW	24-LED light head, Blue/White
MPS122U-AW	24-LED light head, Amber/White
MPS122U-RW	24-LED light head, Red/White
MPS122U-RB	24-LED light head, Red/Blue

MICROPULSE ULTRA 12, TRI-COLOR, SURFACE MOUNT, 12/24 VDC, CLEAR LENS

MPS123U-RBW	36-LED light head, Red/Blue/White
MPS123U-BAW	36-LED light head, Blue/Amber/White

MICROPULSE ULTRA 12, TRI-COLOR, STEADY BURN, SURFACE MOUNT, 12/24 VDC, SMOKED LENS

MPS123UX-RBW-SMK	36-LED light head, Red/Blue/White
------------------	-----------------------------------

ACCESSORIES AND KITS

MPSUMB3-1	Chrome bezel for (1) MicroPulse Ultra 3
MPSUMB3-2	White bezel for (1) MicroPulse Ultra 3
MPSUMB6-1	Chrome bezel for (1) MicroPulse Ultra 6
MPSUMB6-2	White bezel for (1) MicroPulse Ultra 6
MPSUMB12-1	Chrome bezel for (1) MicroPulse Ultra 12
MPSUMB12-2	White bezel for (1) MicroPulse Ultra 12
MPSM6U-WIN	Adhesive mount for (1) MPS6U light. Kit includes 90°, 67°, 46°, and 30° shrouds



MicroPulse, Pathfinder, Solaris, SpectraLux, FSLink and FSJoin are trademarks of Federal Signal Corporation.