

Model LP3 LED

StreamLine® Series LED Lights

2562369 Rev A2 0323



Limited Warranty: This product's limited warranty can be found at www.fedsig.com/SSG-Warranty.

Messages to Installers and Users ⚠ This product should be installed to code by a licensed electrician and follow all safety instructions. Failure to do so may result in property damage, serious injury, or death.

- Read and understand instructions before installing or operating the equipment.
- **SHOCK HAZARD**—To avoid electrical shock hazards, do not connect wires when power is applied.
- Do not connect this device to the system when power is on.
- After installation, ensure that the lens screw is properly tightened and that threaded joints are fully engaged.
- After installation, test the device to ensure that it is operating properly.
- Establish a procedure to routinely check the device installation for integrity and proper operation.

Failure to follow all safety precautions and instructions may result in property damage, serious injury, or death.

Unpacking the Device: After unpacking the device, examine it for damage and verify the parts. If a part is missing or appears damaged, do not attempt to install. Contact Federal Signal Customer Support at +1 708-587-3587 or iordersup@fedsig.com.

Electrical Ratings: 0.15A at 24 Vdc, 0.06A at 120 Vac 50/60Hz

Mounting the Device

The models LP3SL and LP3TL LED lights can be mounted directly to a flat surface. When surface-mounting the Model LP3SL, wiring can be run through a hole in bottom of the housing or through a notch in the bottom recess of the housing.

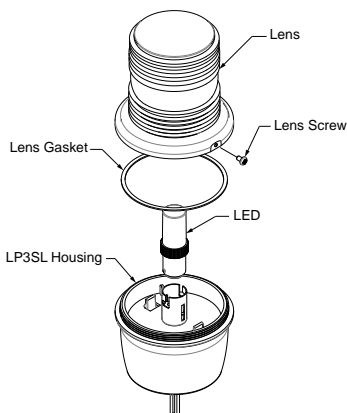
IMPORTANT: If the device operates on AC voltage, do NOT route wiring through the notch in the housing. Routing wiring through the notch violates the National Electrical Code and invalidates the UL listing of the beacon.

Surface Mounting the LP3SL

To mount the LP3SL:

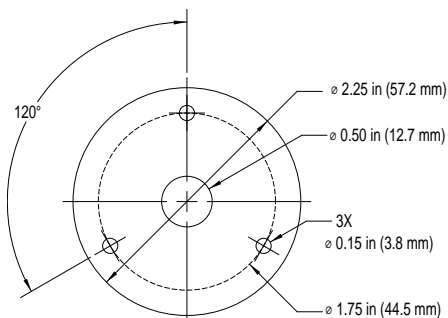
1. Remove the lens screw. See Figure 1.

Figure 1 Model LP3SL (exploded view)



2. Remove the lens from the housing by turning it counter-clockwise.
3. Remove the LED assembly by depressing the two snap tabs inside the housing and lifting it upwards.
4. Using the rubber gasket as a template or the dimensions shown in Figure 2, mark three mounting holes and the center wiring hole.
5. Drill or punch out holes as necessary.

Figure 2 Gasket dimensions for Model LP3SL



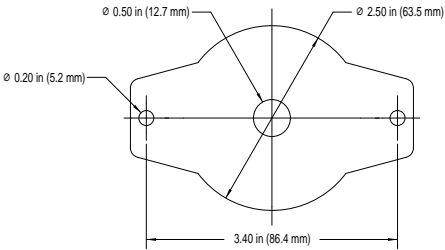
6. If you are running wire through the notch in the bottom recess of the housing, remove a 0.28 in (7.1 mm) diameter knockout in the bottom of the housing, and remove the tab from the rubber gasket.
7. Locate the thick rubber gasket on the mounting surface and place the housing on top of the gasket.
8. Secure the device to the mounting surface using the appropriate user-supplied No. 6 (3.5 mm) screws.

Surface Mounting the LP3TL

To mount the LP3TL:

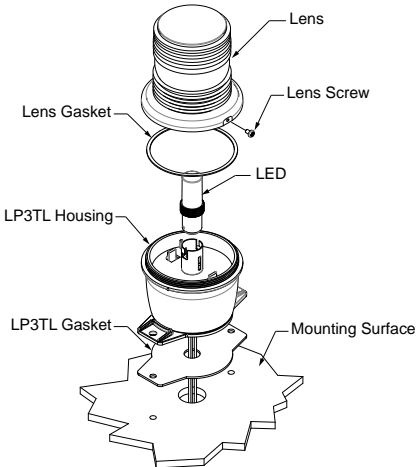
1. Using the gasket as a template or the dimensions shown in Figure 3, mark two mounting holes and the center wiring hole (if the wiring is to enter through the bottom of the housing).
2. Drill or punch out holes as necessary.

Figure 3 Gasket dimensions for Model LP3TL



3. Locate the rubber gasket on the mounting surface and place the housing on top of the gasket. See Figure 4.

Figure 4 Model LP3TL (exploded view)



4. Secure the housing to the mounting surface using the appropriate user-supplied No. 10 (5 mm) screws.

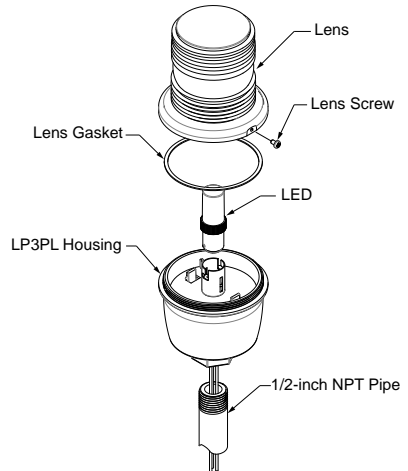
Pipe Mounting the LP3PL

Model LP3PL lights are to be installed on 1/2-inch NPT pipe. If 3/4-inch NPT pipe is used, a user-supplied reducer and pipe nipple are required.

To pipe-mount the Model LP3PL:

1. Attach the light to the pipe by turning the beacon clockwise.
2. To secure the light, use a tool against the wrench flats on the conduit hub.

Figure 5 Model LP3PL (exploded view)

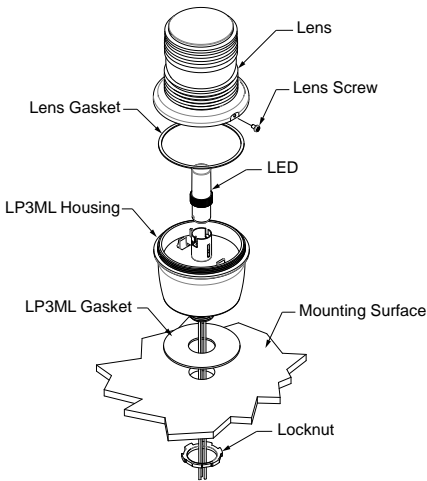


Panel Mounting the LP3ML

To panel mount the device:

1. Drill or punch a 7/8 in (22.2 mm) hole in mounting surface.
2. Locate the gasket on mounting surface, and place the device on top of the gasket.
3. Tighten the supplied locknut to secure the light.

Figure 6 Model LP3ML (exploded view)



Wiring the Device

The LED lights come assembled from the factory with two or three color-coded leads for making field connections.

SHOCK HAZARD—To avoid electrical shock hazards, do not connect wires while power is applied.

Wiring the AC LED Light

1. Connect the phase side of the line to the black wire.
2. Connect the neutral side of the line to the white wire.
3. Connect the ground to the green/yellow wire.
4. Test the device for proper operation.

Wiring the DC LED Light

1. Connect the positive (+) source to the red wire.
2. Connect the negative (-) source to the black wire.
3. Test the device for proper operation.

Replacing the LED Module

The replacement of the LED module is the only routine maintenance procedure required.

⚠ WARNING

SHOCK HAZARD—To avoid electrical shock hazards, do not replace the LED module when power is applied.

To replace the LED module:

1. Disconnect power to the device.

2. Loosen the locking screw on the lens and remove the lens from the housing by turning it counter-clockwise.
3. Remove the old LED module by depressing the LED and turning it counter-clockwise.
4. Replace the module with the Federal Signal approved replacement LED listed in Table 1 on page 3.
5. Attach the lens to the housing by turning it clockwise until seated.
6. Secure the lens to the base with the locking screw.
7. Connect power to the device and test it for proper operation.

Ordering Accessories and Replacement Parts

Typical spare parts are listed in Table 1. Due to certification, certain component parts are not available for field replacement. Units with this type of damage must be either replaced entirely or returned to Federal Signal for service. To order accessories and replacement parts, please call Federal Signal Customer Support at 708-534-4756 or 877-289-3246.

Table 1 Replacement Parts

Description	Part Number
LED module, 24 Vdc	K14702254A
LED module, 120 Vac	K14702196A
Lens, Amber	K8589063A
Lens, Blue	K8589063A-01
Lens, Clear	K8589063A-02
Lens, Green	K8589063A-03
Lens, Red	K8589063A-04
Kit, LP3 lens gasket, LP3T gasket, LP3S gasket	K858900353A

Maintenance and Service

Technical Assistance: Contact our Technical Support Team at +1 708-587-3587 or signalsupport@fedsig.com.

Repair Service: A return authorization is required. Contact your Authorized Distributor or Federal Signal Customer Support. Defective products under warranty will be repaired or replaced at Federal Signal's discretion.

Product Returns: Returns require authorization from Federal Signal. Contact your Authorized Distributor for more information on our return policy or to request a return.

Certifications

UL, cUL, and CSA

 **WARNING**

Not to be used as a visual public mode alarm notification appliance.

CE

 **WARNING**

Do not use as a Visual Fire Alarm Device.

When installing this product on machines as an Indicator or Flashing Light, please note the following:

- Indicator lights shall be selected and installed in such a manner as to be visible from the normal position of the operator.
- Circuits used for visual devices that are used to warn persons of an impending hazardous event shall be fitted with facilities to check the operability of these devices.
- For further distinction or information, and especially to give additional emphasis, flashing lights can be provided to attract attention, request immediate action, indicate a discrepancy between the machine state, and indicate a change in the machine process.
- It is recommended that higher flashing frequencies be used for higher priority information. See the Specifications section for flash rate.
- When flashing lights are used to provide higher priority information, additional acoustic warnings should be considered.
- Visual indicators shall be clearly and durably marked regarding their functions, either on or adjacent to the device.
- Indicator lights should be color-coded with respect to the condition (status) of the machine according to Table 2.

Table 2 Color Coding

Color	Meaning	Explanation	Action by Operator
Red	Emergency	Hazardous condition	Immediate action to deal with a hazardous condition (e.g., switching off the machine supply, being alert to the hazardous condition, and steering clear of the machine).
Yellow	Abnormal	Abnormal condition impending critical condition	Monitoring and/or intervention (e.g., by reestablishing the intended function).
Blue	Mandatory	Indication of a condition that requires operator action	Mandatory action
Green	Normal	Normal condition	Optional
White	Neutral	Other conditions. May be used when doubt exists about the application of other colors.	Monitoring



FEDERAL SIGNAL Safety and Security Systems

2645 Federal Signal Drive, University Park, Illinois 60484

Additional translations available at signaling.fedsig.com

Traducciones adicionales disponibles en signaling.fedsig.com

Customer Support 1-800-344-4634+1-708-534-4756, iordersup@fedsig.com

Technical Support 1-800-755-7621+1-708-587-3587, signalsupport@fedsig.com

signaling.fedsig.com



SCAN ME