

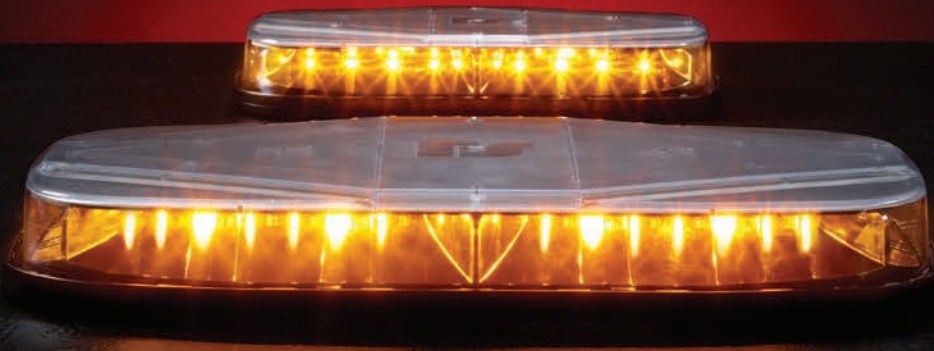


HIGHLIGHTER.®

WORK ZONE DEFENSE

HIGHLIGHTER®

COMPACT. DURABLE. DIVERSE.

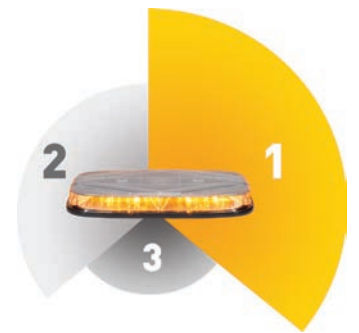


The **HIGHLIGHTER® ELITE** and **HIGHLIGHTER® MICRO** leverage the latest and greatest technology advancements offering users a choice between two high-performing 10-inch and 15-inch mini-light bars. These mini-light bars are compact, durable, easy to install, and diverse in their capabilities.



**360°
OF LIGHT**

Continuous illumination.
No dark spots.



**CLASS 1
SAE**

For maximum warning
intensity in work zones



IP69K

**MAXIMUM
PROTECTION
FROM DUST &
WATER**

Pressure wash and
dust resistant

LED BENEFITS



Low cost of
ownership



No bulbs or
tubes to replace



Warranty

TWO OPTIONS BUILT FOR PERFORMANCE

HIGHLIGHTER® ELITE

- Low-profile 15-inch mini-light bar
- Single-, split-, and dual-color models
- Unique "edge cruise" lighting on dual-color models
- (25) flash patterns
- Multi-voltage, 12/24 Vdc
- Five-year warranty



HIGHLIGHTER® MICRO

- Low-profile 10-inch mini-light bar
- Single- and split-color models
- (25) flash patterns
- Multi-voltage, 12/24 Vdc
- Five-year warranty



DOMES COLOR OPTIONS



Amber

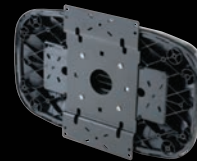


Clear

PLUS, A VARIETY OF MOUNT OPTIONS



Elite Suction-cup Mount



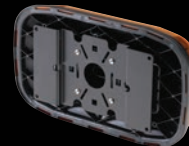
Elite Permanent Mount



Elite Magnet Mount



Micro Suction-cup Mount



Micro Permanent Mount

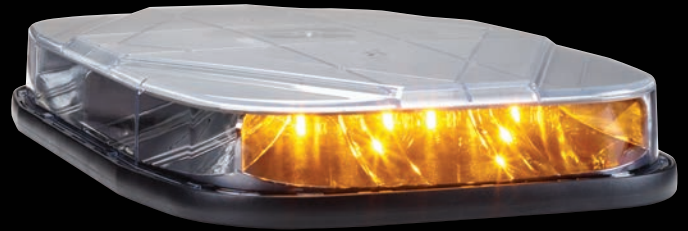


Micro Magnet Mount

HIGHLIGHTER® ELITE CRUISE



Edge Cruise
(dual-color models)



End Cruise
(single/split-color models)

HIGHLIGHTER® ELITE SPECIFICATIONS

Voltage	12/24 Vdc
Current Draw	2.0 A @ 12 Vdc/1.0 A @ 24 Vdc
Length	14.7 in (37.2 cm)
Width	9.5 in (24.1 cm)
Height	2.0 in (5.1 cm) permanent 2.1 in (5.4 cm) magnet 2.2 in (5.6 cm) suction-cup
Ship Weight	4.5 lb (2.0 kg) permanent 4.3 lb (2.0 kg) magnet 5.3 lb (2.4 kg) suction-cup
LED Colors	Amber, Blue, Green, Red, White
Dome Colors	Amber, Clear
Flash Patterns	25
Compliance	SAE J595 Class 1 (Amber, Blue, Red, White) SAE J595 Class 3 (Green) SAE J845 Class 1 (Amber, Blue, Red, White) SAE J845 Class 3 (Green) CCR Title 13 NFPA 1901 IP69K

HIGHLIGHTER® MICRO SPECIFICATIONS

Voltage	12/24 Vdc
Current Draw	2.0A @ 12 Vdc/1.0 A @ 24 Vdc
Length	10.2 in (25.9 cm)
Width	5.9 in (14.9 cm)
Height	1.6 in (4.1 cm) permanent 1.9 in (4.9 cm) magnet 2.1 in (5.3 cm) suction-cup
Ship Weight	1.7 lb (0.8 kg) permanent 2.0 lb (0.9 kg) magnet 1.6 lb (0.7 kg) suction-cup
LED Colors	Amber, Blue, Green, Red, White
Dome Colors	Amber, Clear
Flash Patterns	25
Compliance	SAE J595 Class 1 (Amber, Blue, Red, White) SAE J595 Class 3 (Green) SAE J845 Class 1 (Amber, Blue, Red, White) SAE J845 Class 3 (Green) CCR Title 13 IP69K

To learn more, visit www.fedsig.com

2645 Federal Signal Drive, University Park, IL 60484
800.264.3578 | 708-534-3400

