

## INSTALLATION AND OPERATING INSTRUCTIONS FOR MAGNETIC MOUNTING KIT ON MINI-LIGHTBAR LIGHT ASSEMBLIES

### SAFETY MESSAGE TO INSTALLERS AND USERS

People's lives depend on your safe installation of our products. It is important to read, understand and follow all instructions shipped with this product and the related add-on products. In addition, listed below are some other important safety instructions and precautions you should follow:

- To properly install this light: you must have a good understanding of automotive electrical procedures and systems, along with proficiency in the installation and use of safety warning equipment.
- When drilling into a vehicle structure, be sure that both sides of the surface are clear of anything that could be damaged. Remove all burrs from drilled holes. To prevent electrical shorts, grommet all drilled holes through which wiring passes.
- You should frequently inspect the light to ensure that it is operating properly and that it is securely attached to the vehicle.
- After installation and testing are complete, provide a copy of this instruction sheet to all operating personnel.
- File these instructions in a safe place and refer to them when maintaining and/or reinstalling the product.

Failure to follow all safety precautions and instructions may result in property damage, serious injury, or death to you or others.

### A. GENERAL.

This instruction sheet provides directions for installation and wiring of a magnetic mounting kit on HighLighter™ Series Light Assemblies.

After unpacking the kit, inspect it for damage that may have occurred in transit. If the unit has been damaged, do not attempt to install or operate it. File a claim immediately with the carrier, stating the extent of damage. Carefully check all envelopes, shipping labels, and tags before removing or destroy-

ing them. Ensure that the parts listed in the KIT CONTENTS LIST are contained in the packing carton.

### B. KIT CONTENTS LIST.

Qty.	Description	Part Number
4	Screw, Thd. Form, 1/4" x 5/8"	7011165A-10
1	Cable Assembly with Plug	175897B
4	Magnet Assembly	8550A012A

### C. INSTALLATION OF MAGNETS.

#### NOTE

The magnetic mounting kit is intended for use with the HighLighter Light Assembly.

Magnetic mounting provides a secure, temporary mounting method for most installations. However, it is not intended for use on the exterior of a moving vehicle.

See figure 1. Attach the magnets to the base using the 1/4" thread-forming screws. Leave a gap of 3/16" between the magnets and the base.

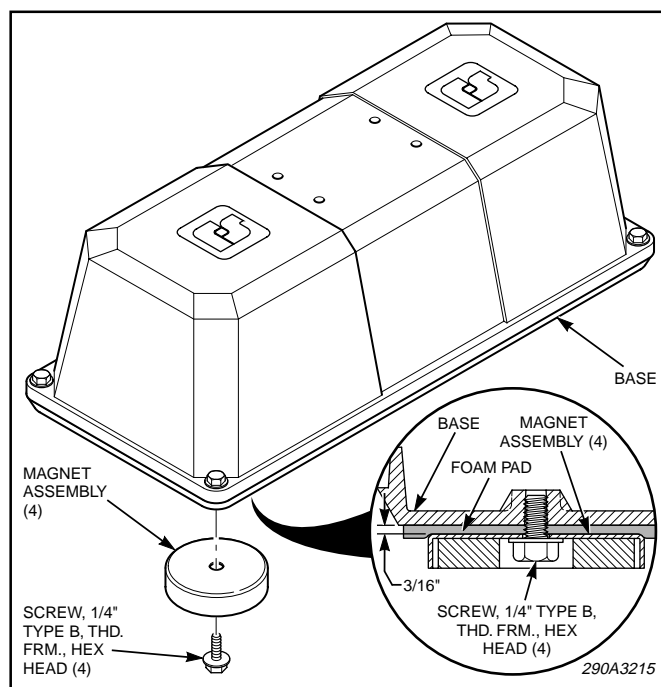


Figure 1.

## D. WIRING.

### CAUTION

Cable assembly damage will result if two rotating lights and a traffic clearing light are connected together. Do not use the supplied cable assembly if connecting two rotating lights and a traffic clearing light.

To install the cable assembly, proceed as follows:

1. Remove and retain the four screws (one at each corner) which secure the dome to the base and remove the dome (see figure 2).
2. Using a single edge razor blade, carefully cut a slit in the mounting pad directly under the existing wires. The slit should be just long enough to remove the strain relief bushing from the base.
3. Remove the strain relief bushing from the base plate. Pull the wires out of the wire exit hole, and remove and retain the strain relief bushing from the wires. Disconnect the black and red incoming wires from the terminal block.
4. Route the cable assembly through the wire routing hole in the base plate. Connect the ribbed wire to the positive (+) terminal and the smooth wire to the negative (-) terminal.

### NOTE

If the light assembly is equipped with flashing lights, trim the blue wire to an appropriate length and connect it to the terminal block's positive (+) terminal (incoming cable's ribbed wire). Also, ensure that the cigarette lighter fuse is a 15-ampere fuse (flashing light models only).

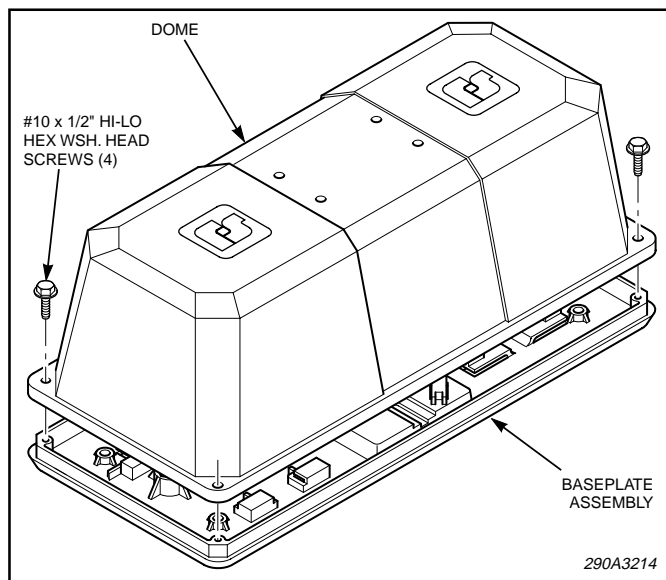


Figure 2.

5. Replace the previously removed strain relief bushing.

### CAUTION

Interference with a rotating reflector can damage the reflector or wires. Ensure that wires are dressed to prevent any interference.

6. Dress the wires inside the Light Assembly with user-supplied tie-wrap(s).
7. Test for proper operation.
8. Replace the dome using the previously removed screws.

## E. INSTALLATION ON VEHICLE ROOF.

Place the light assembly on the vehicle roof at a location which provides maximum signalling effectiveness for your application.

### WARNING

Because vehicle roof construction and driving conditions vary, Federal does not recommend driving a vehicle with a magnetically mounted warning light installed. The light could fly off the vehicle causing injury or damage. Repair of damage incurred because of ignoring this warning shall be the sole responsibility of the user.

Holding power of magnetic mounting systems is dependent upon surface finish, surface flatness, and thickness of the steel mounting surface. Therefore, to promote proper magnetic mounting:

- Mounting surface and magnets must be kept clean, dry, and free of foreign particles that prevent good surface contact.
- Ensure that mounting surface is flat.
- Magnetic mounting system should not be used on vehicles with vinyl tops.
- To prevent sliding of light assembly on mounting surface, quick acceleration and hard stops should be avoided.

## F. OPERATION.

### WARNING

If driving conditions require your full attention, you should avoid inserting the plug in the cigarette lighter socket.

Insert the plug on the end of the cable assembly in the cigarette lighter socket.