

Installing the Convergence Configuration Software and Accessing the Help Manual

This Quick Start Guide explains how to install the Convergence Configuration Software on your computer. After you install the software, you can use it to open a pdf of the Control Pad Configuration Software Manual.

IMPORTANT: The Convergence Configuration software is only available on the Federal Signal website. For the latest version, visit www.fedsig.com and click **Resources > Software Downloads**.

System Requirements

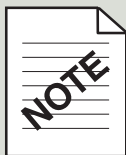
The Convergence Configuration Software is supported on laptops and computers meeting these minimum requirements:

- 1 GHz Pentium® 3 processor or compatible (32-bit)
- Microsoft Windows® XP with Service Pack 2
Windows Vista (32-bit versions)
Windows 7 (32-bit and 64-bit versions)
- 512 MB RAM for Windows XP
1 GB RAM for Windows Vista and Windows 7
Depending on your system, more memory may be required.
- 15 MB available disk space
- 1024 x 768-pixel monitor resolution, 16-bit display (32-bit recommended)
- One free RJ-45 Ethernet port for connection to the Smart Controller control pad with the included Ethernet cable (Federal Signal part number 1751532)

Installing the Software

To install the Convergence Configuration Software:

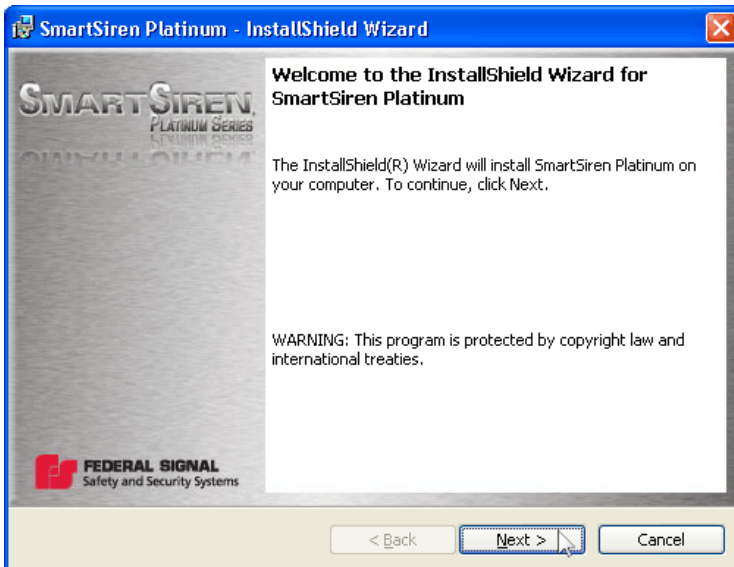
1. Visit www.fedsig.com and click **Resources > Software Downloads** and download the latest version.
2. Close all applications that are running on your computer.



Uninstall the any previous version of the configuration software

If you have a version of the software installed on your computer, uninstall it before installing the latest version by selecting **Start > Control Panel > Add or Remove Programs > SmartSiren Platinum > Remove**.

- When the InstallShield® Wizard appears, click **Next** to continue. Follow the on-screen instructions to complete the installation. If the InstallShield® Wizard does not appear automatically, navigate in to where you downloaded the file and double-click **setup.exe**. If you are using Windows® Vista or 7, right-click **setup.exe** and choose **Run as Administrator**.



Accessing the Help Manual

To open a pdf of the Help Manual for the Convergence Configuration Software:

- Launch the SmartSiren Platinum software by double-clicking the FS icon on your desktop.



- In the main menu, click **Help > Help Manual**.

