

2562268 REV. D1 0520

Safety Message to Installers of Warning Light Equipment

▲ WARNING

People's lives depend on your proper installation and servicing of Federal Signal products. It is important to read and follow all instructions shipped with this product and the original product. Listed below are some other important safety instructions and precautions you should follow:

- To properly install the lighting system, you must have a good understanding of automotive systems, along with proficiency in the installation and use of safety warning equipment.
- If a vehicle seat is temporarily removed, verify with the vehicle manufacturer if the seat needs to be recalibrated for proper airbag deployment.
- When drilling into a vehicle structure, ensure that both sides of the surface are clear of anything that could be damaged.
- Refer to the instructions included with the light system for the proper electrical connections.
- To be an effective warning device, this product produces bright light that can be hazardous to your eyesight when viewed at close range. Do not stare directly into this lighting product at close range, or permanent damage to your eyesight may occur.
- Frequently inspect the light system to ensure that it is operating properly and that it is securely attached to the vehicle.
- Refer to the instructions packed with related products for additional precautions and information.
- File these instructions in a safe place and refer to them when maintaining or reinstalling the product.

Failure to follow all safety precautions and instructions may result in property damage, serious injury, or death.

Introduction

This publication provides instructions for installing the Legend Lightbar Hook-On Mounting Kit. A vehicle-specific mounting hook that completes the installation is purchased separately.

Unpacking the Kit

After unpacking the product, inspect it for damage that may have occurred in transit. If it has been damaged, do not attempt to install or operate it. File a claim immediately with the carrier, stating the extent of damage. Carefully check all envelopes, shipping labels, and tags before removing or destroying them. Ensure that the parts listed in Table 1 are included in the package.

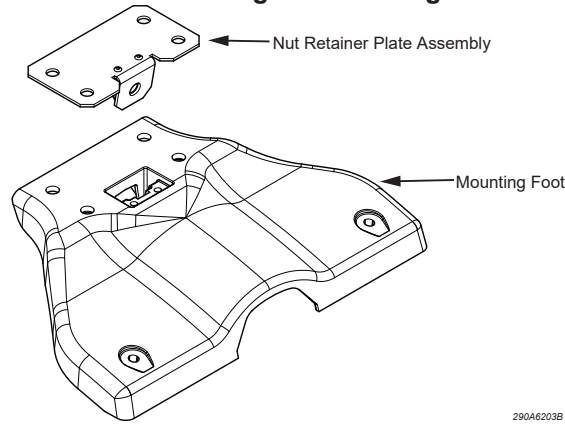
Table 1 Kit contents

Qty.	Description	Part No.	Qty.	Description	Part No.
2	Foot, Mounting	8653183	8	5/16-18 x 1-inch Stainless Steel Carriage Bolt	7004025-16
4	0.29-inch Foot Pad	8653157-03	8	5/16-18 Nut	7059125
4	0.44-inch Foot Pad	8653157-04	8	5/16-inch Split Stainless Steel Lockwasher	7074A020
4	0.69-inch Foot Pad	8653157-07	8	5/16-inch Stainless Steel Flat Washer	7072A031
4	1/2-inch #10 Plastite® Screw	7011234-08	1	Keeper Plate Kit	8583193
2	Nut Retainer Plate Assembly	8653218			

Preparing the Mounting Foot

Install a nut retainer plate assembly on the top of each mounting foot (Figure 1).

Figure 1 Hardware securing the mounting foot to the light bar



Installing the Mounting Foot on the Light Bar

Refer to the installation and maintenance instructions included with the light bar for electrical installation instructions. Plan all cable routing before the installation.

⚠ WARNING

HEAVY OBJECT: Use lifting aids and proper lifting technique when removing or replacing this product. Failure to follow this warning may cause personal injury.

To install the mounting foot on the light bar:

1. Place the light bar upside down on soft rags or cardboard to avoid marring the plastic domes.
2. Insert two 5/16-18 carriage bolts into each track (four total) through the center access holes in the light bar. See Figure 2 on page 3.
3. Position the bolts to match the holes in the mounting foot. Baseline positions for the mounting foot on some common vehicles are shown in Table 2 below and Figure 3 on page 3.

Table 2 Baseline positions for the mounting foot

Lightbar Model	Vehicle Make/Model	Distance "D"	Front Pad	Rear Pad
LGD45	2008 Ford Crown Victoria	15-1/8"	0.29"	0.29"
	2008 Chevy Impala	15-1/4"	0.44"	0.29"
	2008 Dodge Charger	15-0"	0.29"	0.44"

4. Place the prepared mounting foot over the four carriage bolts. Install four flat washers, lock washers, and 5/16-18 nuts on the carriage bolts, leaving the bolts just loose enough to reposition the mounting foot. Do not tighten the nuts yet.

Figure 2 Hardware securing the foot to the vehicle

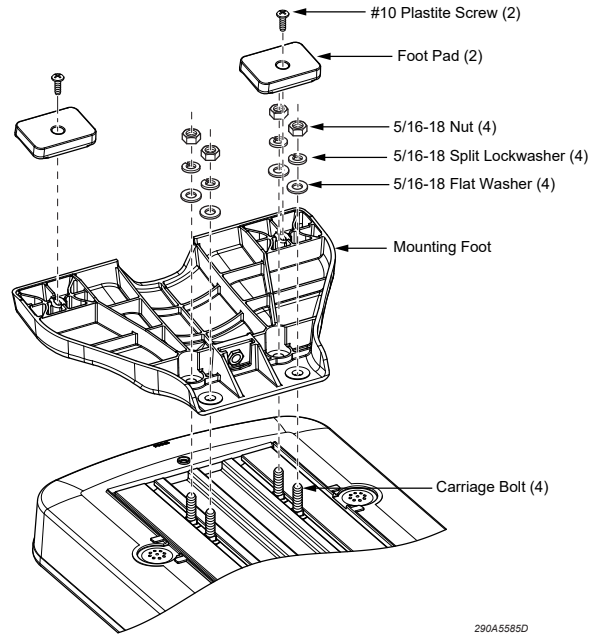
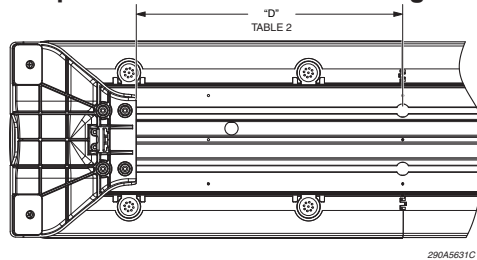


Figure 3 Baseline position "D" for the mounting foot on the vehicle



5. For vehicles shown in Table 2 on page 2, install the appropriate foot pads and secure them with the Plastite screws. For other vehicles, start with the 0.44-inch pads and temporarily attach them to the mounting foot with tape.
6. Repeat steps 1 through 5 on the other side of the light bar.

Installing the Light Bar on the Vehicle Roof

To install the light bar on the vehicle roof:

1. Place the light bar assembly on the vehicle roof at the selected location. Usually the light bar assembly should be installed so that the mounting hooks attach at, or immediately behind, the door center post (B-pillar). Before proceeding, see the instructions provided with the separately purchased mounting hook kit.
2. Adjust both mounting foot assemblies in or out as necessary until the foot pads rest near the edge of the roof or gutter where the roof is the most rigid.
3. Ensure that the light bar is level. To level it, use foot pads of different thicknesses and/or reposition the light bar assembly slightly forward or backward.
4. Remove the light bar from the vehicle roof and place it on soft rags or cardboard to avoid marring the plastic domes.

NOTICE

PROPERLY TIGHTEN NUTS: To avoid damaging the light bar, do not overtighten the nuts.

5. Turn the light bar over so that the bottom faces up. Torque the nuts on the four 5/16-inch bolts on each mounting foot 120 in-lb to 132 in-lb.
6. If not installed, secure the foot pads with the #10 Plastite® screws.
7. Place the light bar on the vehicle roof in the selected position.
8. To fasten the mounting hook, refer to the instructions included with the Keeper Plate Kit.

Getting Technical Support

For technical support, please contact:

Federal Signal Corporation
Service Department
Phone: 1-800-433-9132
Email: empsserviceinfo@fedsig.com

Getting Repair Service

The Federal Signal factory provides technical assistance with any problems that cannot be handled locally. Any product returned to Federal Signal for service, inspection, or repair must be accompanied by a Return Material Authorization (RMA). Obtain a RMA from a local Distributor or Manufacturer's Representative. Provide a brief explanation of the service requested, or the nature of the malfunction.

Address all communications and shipments to the following:

Federal Signal Corporation
Service Department
2645 Federal Signal Dr.
University Park, IL 60484-3167



FEDERAL SIGNAL
Safety and Security Systems

2645 Federal Signal Drive
University Park, Illinois 60484-3167

www.fedsig.com

Customer Support

Police/Fire-EMS: 800-264-3578 • +1 708 534-3400

Work Truck: 800-824-0254 • +1 708 534-3400

Technical Support: 800-433-9132 • +1 708 534-3400

© Copyright 2009 - 2020 Federal Signal Corporation