

# **INSTALLATION INSTRUCTIONS FOR MODEL JMMK MAGNETIC MOUNTING KIT ON MINI-JET™ LIGHT ASSEMBLY**

## **SAFETY MESSAGE TO INSTALLERS AND USERS**

People's lives depend on your safe installation of our products. It is important to read, understand and follow all instructions shipped with the products. In addition, listed below are some other important safety instructions and precautions you should follow:

- To properly install mounting kit, you must have a good understanding of emergency vehicle procedures and systems.
- Inspect the mounting system periodically to ensure it is in good condition.
- Because vehicle roof construction and driving conditions vary, Federal does not recommend driving a vehicle with a magnetically mounted warning light installed. The light could fly off the vehicle causing injury or damage. Repair of damage incurred because of ignoring this warning shall be the sole responsibility of the user.
- Refer to instruction sheet packed with light for proper electrical connection.
- File these instructions in a safe place and refer to them when maintaining and/or re-installing the product.

Failure to follow all safety precautions and instructions may result in property damage, serious injury, or death to you or others.

## **A. UNPACKING.**

After unpacking the kit, carefully check all envelopes, shipping labels, and tags before removing or destroying them. Ensure that the parts listed in the KIT CONTENTS LIST are contained in the packing carton.

## **B. KIT CONTENTS LIST.**

Qty.	Description	Part Number
4	Screw, 1/4-20, Truss Hd., Slot	7000A459-14
4	Nut, 1/4-20, Acorn	7054A010
4	Nut, 5/16-18, S.S.	7057A027
4	Washer, 5/16", Flat	7072A031
4	Lockwasher, 1/4", Int. Tooth, S.S.	7075A067
4	Lockwasher, 5/16", S.S.	7074A020
4	Grommet	8542A422A
4	Spacer	8542A423A
2	Bracket, Permanent	8542C185A
4	Magnet	8550A012A-01
2	Plate, Stud	8552A280A

## **C. ASSEMBLY OF MOUNTING BRACKETS.**

To assemble magnets to the mounting brackets, proceed as follows (see figures 1 and 2):

1. Insert a rubber grommet into the hole of each magnet. Insert a 3/8" spacer into each grommet.
2. From the underside of the magnet, insert a 1/4-20 truss head screw through the previously installed spacer.
3. Place mounting bracket over exposed threads of 1/4-20 hex head screw. Place 1/4" internal tooth lockwasher over screw. Secure magnet to mounting bracket with 1/4-20 acorn nut.
4. Perform the previous steps until all four magnets are installed on the two mounting brackets.

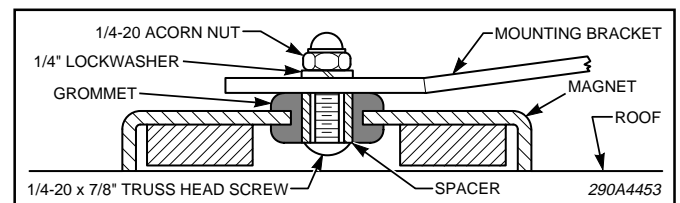


Figure 1.

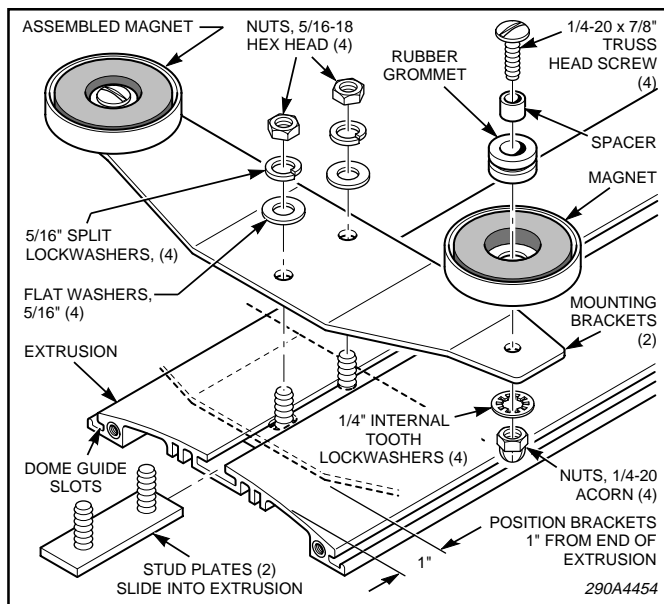


Figure 2.

#### D. INSTALLATION OF MOUNTING BRACKET TO LIGHT.

1. See figure 3. Loosen retaining band screws. Remove both retaining bands. Remove the two screws located at the identification plate, on the end where cable exits light assembly. Remove the end cap and slide the plastic filler out of extrusion slot. Retain the screws, retaining bands, and the plastic filler.

2. Avoid scratching the dome while carefully turning the light assembly upside down.

3. Slide a stud plate for a mounting bracket assembly into the slot in extrusion as shown in figure

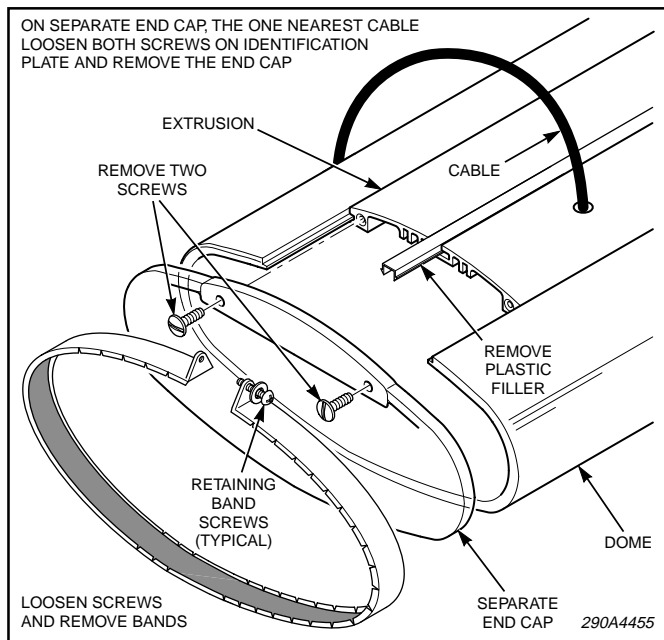


Figure 3.

2. Slide a stud plate for the other mounting bracket assembly into the same extrusion slot.

4. Assemble a mounting bracket to each stud plate with the 5/16" hex nuts, 5/16" split lockwashers, and 5/16" flat washers as shown in figure 2. Secure the brackets about 1 inch from the ends of the extrusion.

5. Re-install the previously removed end cap and retaining bands.

6. Cut plastic filler to fit between the two bracket assemblies and snap it into the extrusion slot.

#### E. INSTALLATION ON VEHICLE ROOF.

Place the light assembly on the vehicle roof at the desired location. Usually the unit should be installed approximately over the driver's head. Ensure that the light ends are equidistant from the roof gutters (see figure 4). Also, the distance from the windshield to each end of the unit should be the same. Ensure that all fasteners are properly tightened.

#### WARNING

Holding power of magnetic mounting systems is dependent upon surface finish, surface flatness, and thickness of the steel mounting surface. Therefore, to ensure proper magnetic mounting:

- Mounting surface and magnets must be kept clean, dry, and free of foreign particles that prevent good surface contact.
- Ensure that mounting surface is flat.
- Magnetic mounting system should not be used on vehicles with vinyl tops.
- To prevent sliding of light assembly on mounting surface, quick acceleration and hard stops should be avoided.

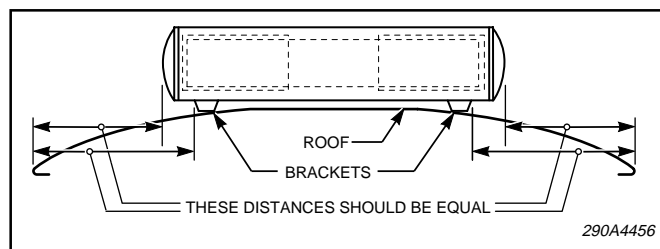


Figure 4.