

INSTALLATION AND MAINTENANCE INSTRUCTIONS FOR MICROJET™ LIGHT BARS

SAFETY MESSAGE TO INSTALLERS OF FEDERAL SIGNAL LIGHT SYSTEMS

⚠ WARNING

People's lives depend on your safe installation of our products. It is important to read, understand and follow all instructions shipped with the products. In addition, listed below are some other important safety instructions and precautions you should follow:

- To properly install a light assembly: you must have a good understanding of automotive electrical procedures and systems, along with proficiency in the installation and use of safety warning equipment.
- When drilling into a vehicle structure, be sure that both sides of the surface are clear of anything that could be damaged.
- A light system is a high current device. In order for it to function properly, a separate ground connection must be made. If practical, it should be connected to the negative battery terminal. At a minimum, it may be attached to a solid metal body or chassis part that will provide an effective ground path as long as the light system is to be used.
- Locate light system controls so the VEHICLE and CONTROLS can be operated safely under all driving conditions.
- This product contains high intensity LED devices. To prevent permanent eye damage, DO NOT stare into the light beam at close range.
- You should frequently inspect the light system to ensure that it is operating properly and that it is securely attached to the vehicle.
- File these instructions in a safe place and refer to them when maintaining and/or re-installing the product.

Failure to follow all safety precautions and instructions may result in property damage, serious injury, or death to you or others.

I. UNPACKING.

After unpacking the light bar, inspect it for damage that may have occurred in transit. If the unit has been damaged, file a claim immediately with the carrier, stating the extent of damage. Carefully check all envelopes, shipping labels and tags before removing or destroying them.

II. KIT CONTENTS LIST.

Qty.	Description
1	Light Assembly
1	Spacer
2	Lockwasher, Split
2	Nut, 3/8-16

III. INSTALLATION.

The basic light bar is completely wired at the factory and does not require any additional internal wiring.

The basic light functions of the unit must be controlled by a user supplied control head and flasher.

⚠ WARNING

Light system controls must be located so that VEHICLE and CONTROLS can be operated safely under all driving conditions.

⚠ WARNING

When installing equipment inside air bag equipped vehicles, the installer MUST ensure that the equipment is installed ONLY in areas recommended by the vehicle manufacturer.

Failure to observe this warning will reduce the effectiveness of the air bag, damage the air bag, or potentially damage or dislodge the equipment, causing serious injury or death to you or others.

A. Light Assembly Mounting.

1. Place the light assembly in the desired position on the flat mounting surface.
2. See figure 1. Scribe a drill position mark about 3-1/4" from the end of the light assembly.
3. See figure 1. Scribe another drill position mark 1-1/2" in from the previously scribed drill position mark.

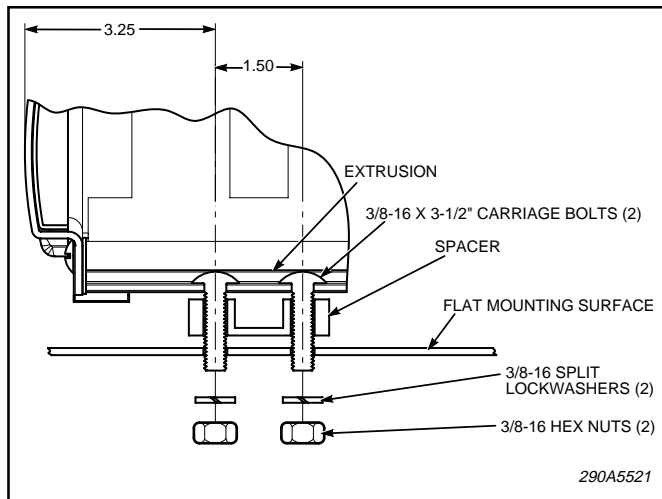


Figure 1.

⚠ CAUTION

Before drilling holes in ANY part of a vehicle be sure that both sides of the mounting surface are clear of parts that could be damaged; such as brake lines, fuel lines, electrical wiring or other vital parts.

4. Drill two (2) 13/32" holes at the previously scribed drill position marks.
5. Secure the light assembly to the flat mounting surface using the spacer, 3/8-16 nuts and 3/8" split lockwashers as shown in figure 1.

IMPORTANT

Clean, lightly oil, and torque the mounting bolts to 150 – 175 in-lb.

- B. Connect the black lead to chassis ground.

⚠ WARNING

If wires are shorted to the vehicle frame or each other, high current conductors can cause hazardous sparks resulting in electrical fires and molten metal.

Verify that no short circuits exist before connecting to the Positive (+) battery terminal.

DO NOT connect this system to the vehicle battery until ALL other electrical connections are made and mounting of all components is complete.

Failure to observe this WARNING will result in fire, burns and blindness.

- C. See figure 2. For proper light operation, the control cable must be properly connected to the user-supplied flasher using the electrical connections shown in table 1

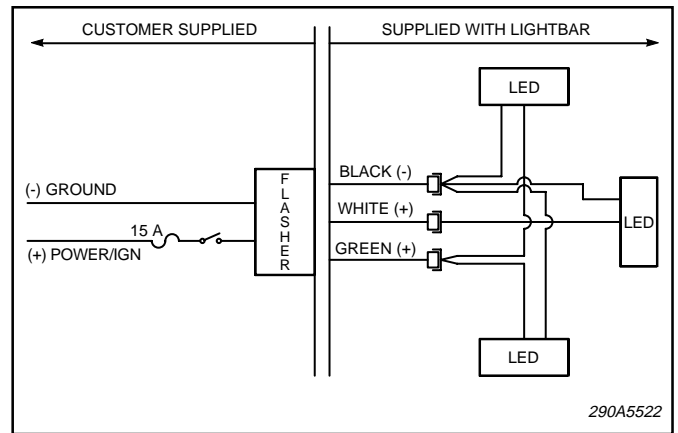


Figure 2.

and the instructions packed with the flasher. Switch current capacities should be at least 15 amps or an appropriate rating for the system when used with other components.

- D. Check for proper operation.

IV. BASIC MAINTENANCE.

⚠ WARNING

High voltages are present inside the light bar. Wait at least ten (10) minutes, after shutting off power, before servicing this unit. Failure to do so may result in property damage, serious injury, or death to you or others.

- A. *Cleaning the Plastic Domes.*

Ordinary cleaning of the plastic domes can be accomplished by using mild soap and a soft rag. Should fine scratches or a haze appear on the domes, they can ordinarily be removed with a non-abrasive, high quality, automotive paste wax.

⚠ CAUTION

The use of other materials such as strong detergents, solvents, petroleum products, etc. can cause crazing (cracking) of the plastic domes.

- B. *Dome Removal.*

1. See figure 3. Release the retaining band by loosening the screw on the band. Slide the retaining band off the light assembly.
2. See figure 3. Remove the two screws located at the Identification Plate of the dome. Retain screws, Identification Plate, and end dome assembly.

Table 1.

Wire Color	Functions
BLK	Common Ground (-)
WHT	Side LED Module
GRN	Front & Back LED Modules

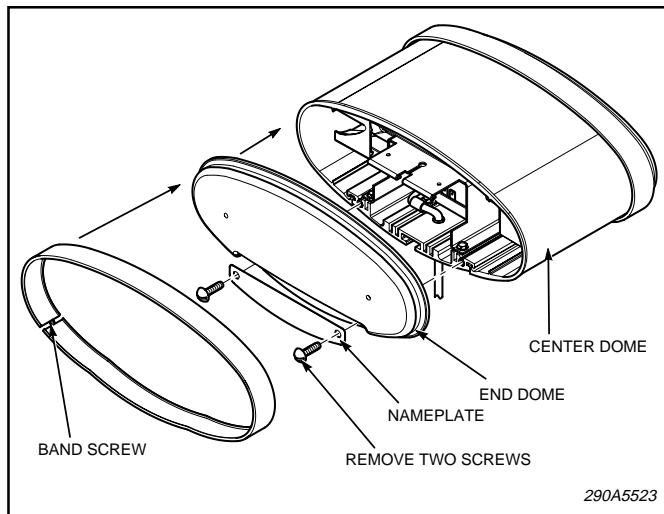


Figure 3.

C. *Cleaning Reflector Assemblies.*

Use a soft tissue to clean the reflector and mirrors. Avoid heavy pressure and the use of caustic or petroleum base solvents, which will scratch or dull the surface.

D. *Service.*

The Federal factory will service your equipment or provide technical assistance with any problems that cannot be handled locally.

Any units returned to Federal Signal for service, inspection, or repair; must be accompanied by Return Material Authorization. This R.M.A. can be obtained from a local Distributor or Manufacturer's Representative.

At this time a brief explanation of the service requested, or the nature of the malfunction, should be provided.

Address all communications and shipments to:

Federal Signal Corporation
Emergency Products Division
Service Department
2645 Federal Signal Drive.
University Park, IL 60466-3195

Copyright 2006 Federal Signal Corporation