



► Dodge Chassis Speaker | Speaker Chassis

FEATURES

- 100-watt speaker features the dependable Federal Signal neodymium speaker driver.
- Driver and passenger side models.
- Mounting brackets match speaker with existing fog lamp cut outs for clean installation.
- Suitable for use in GSA KKK-A1822F compliant systems.

APPROVALS

- SAE J1849
- CAC Title 13
- Class A
- GSA KKK-A1822F

Designed for the perfect fit

The Federal Signal DS100 model speaker is designed specifically for ambulances built on a Dodge 3500 chassis. The 100-Watt speaker utilizes the durable Federal Signal Neodymium speaker driver found in many of our popular speakers and combines it with brackets specifically designed for the Dodge chassis.

Simple installation

The speaker mounts directly into the fog light cut outs of the 2008 Dodge 3500 chassis. This enables for a simple installation without cutting into the bumper. The speaker size matches with the existing fog lamp hole and provides a clean look at the front of the ambulance.

Specify Model

DS100-P 100-watt speaker, passenger side, Dodge Chassis

DS100-D 100-watt speaker, driver side Dodge Chassis

Specifications

Power 100W

Physical Specifications

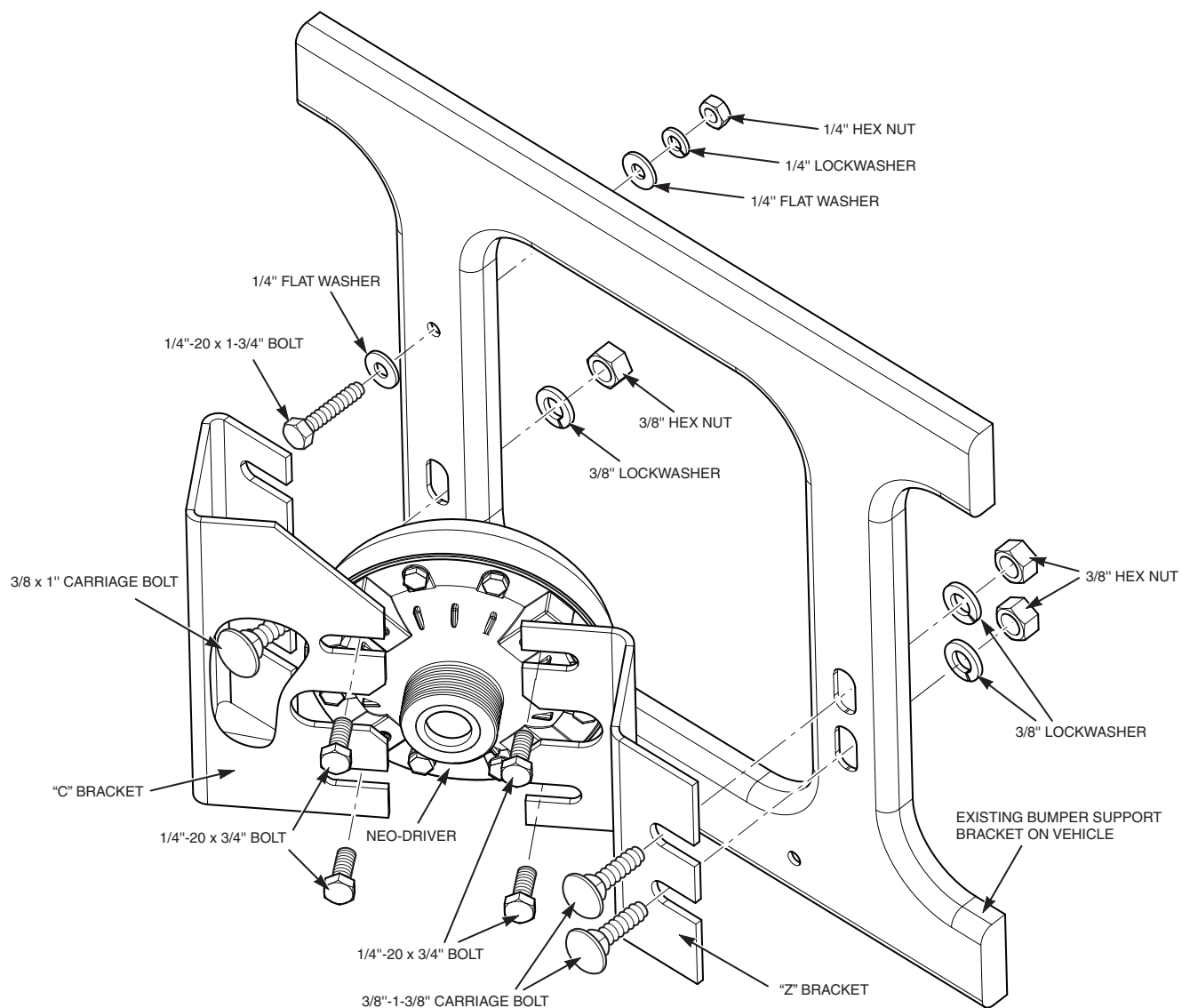
Height 5.8 in (14.7 cm)

Length 5.5 in (14 cm)

Depth 6.5 in (16.5 cm)

Ship Weight

4.0 lbs (1.2 kg)



290A5945