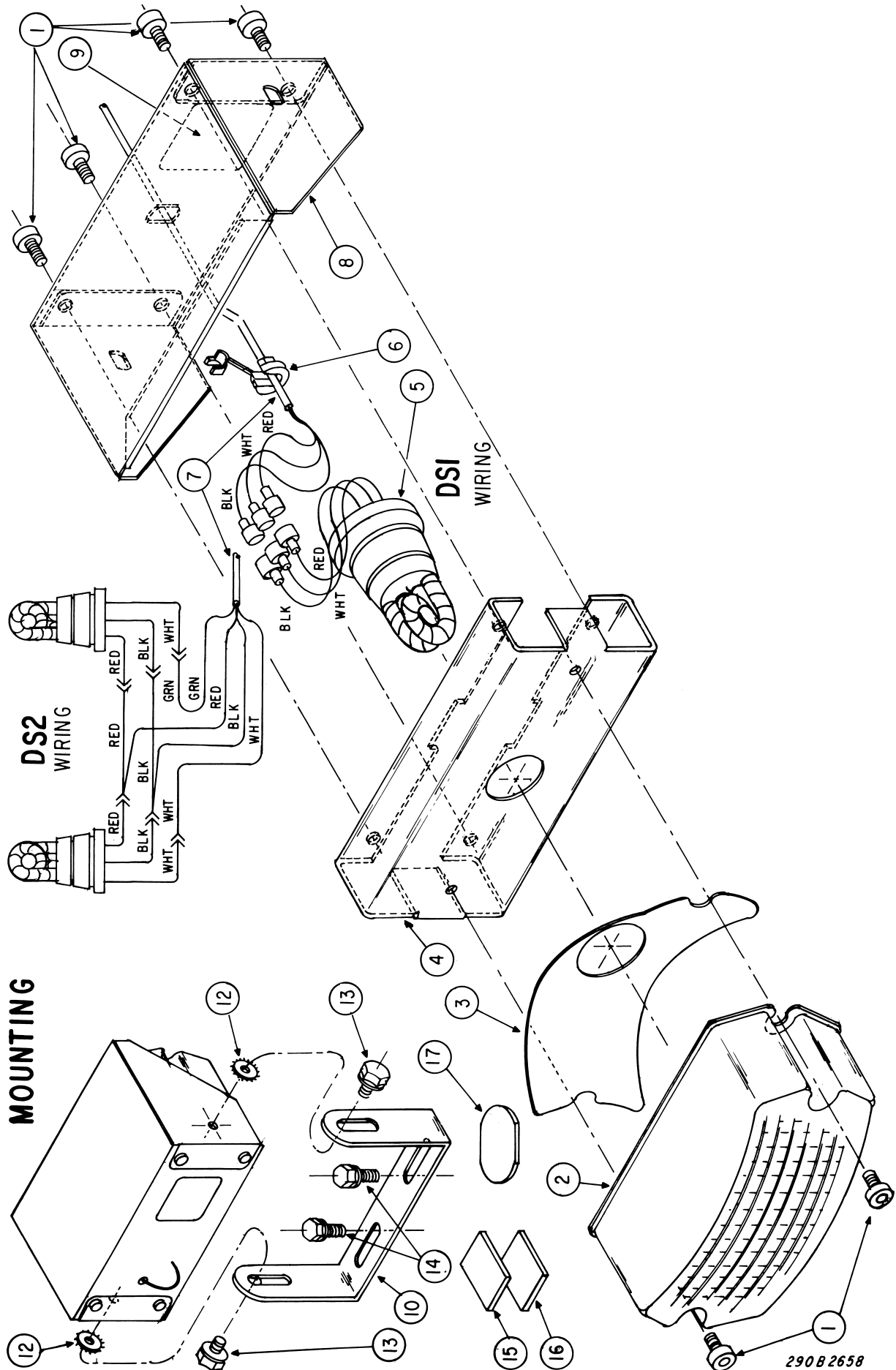


DECK STROBE DS1 AND DS2



Deck Strobe

Models DS1 and DS2

PPL 0276
PARTS LIST

Printed 1999

Item No.	Description	Part No.	DS1	DS2
1	Screw, #8-32 x 1/4" Type TT, Torx Pan Hd.	Z7011163B-04	2	4
2	Lens, Clear	Z8573001B	1AR	2AR
	Lens, Red	Z8573001B-01		
	Lens, Amber	Z8573001B-02		
	Lens, Blue	Z8573001B-03		
	Lens, Green	Z8573001B-04		
	Lens, C.I.E. Blue	Z8573001B-05		
3	Reflector, Strobe	Z8573187A	1	2
4	Bar, Mounting, DS1	Z8575005B	1	0
	Bar, Mounting, DS2	Z8575009B	0	1
5	Tube Assembly, Strobe	CS1-C	1	2
6	Bushing, Strain Relief	Z231166A	1	1
7	Cable Assembly (3 conductors) DS1	Z175762A	1	0
	Cable Assembly (4 conductors) DS2	Z175765A	0	1
8	Cover, DS1		1	0
	Cover, DS2	Z8575010A	0	1
9	Nameplate, DS1	Z81461187A	1	0
	Nameplate, DS2	Z81461187A-01	0	1
10	Bracket, Bail DS1	Z8573105A	1	0
	Bracket, Bail DS2	Z8573106A	0	1
11	Kit, Mounting (includes items 12 thru 17)	Z8575008A	1	1
12	Lockwasher, 1/4" Ext. Tooth	Z7075078	2	2
13	Screw, 1/4-20 x 1/2" Type TT, Hex Wshr. Head	Z7011161B-08	2	2
14	Screw, 1/4 x 5/8" Type B, Hex Wshr. Head	Z7011165A-10	2	3
15	Velcro, Hook, 2" x 2-1/2"	Z8550A101A	1	1
16	Velcro, Loop, 2" x 2-1/2"	Z8550A100A	1	1
17	Pad, Adhesive, 2" x 2-1/2"	Z8550A031A	1	1

DO NOT ORDER PARTS BY ITEM NUMBER.

Give model, description and part number.

When a part number is not supplied, the part is **NOT** available.

Refer to PARTS PRICE LIST (Part No. 1001) for prices of parts.

Federal Signal Corporation
2645 Federal Signal Drive
University Park, IL 60466

Printed in U.S.A.