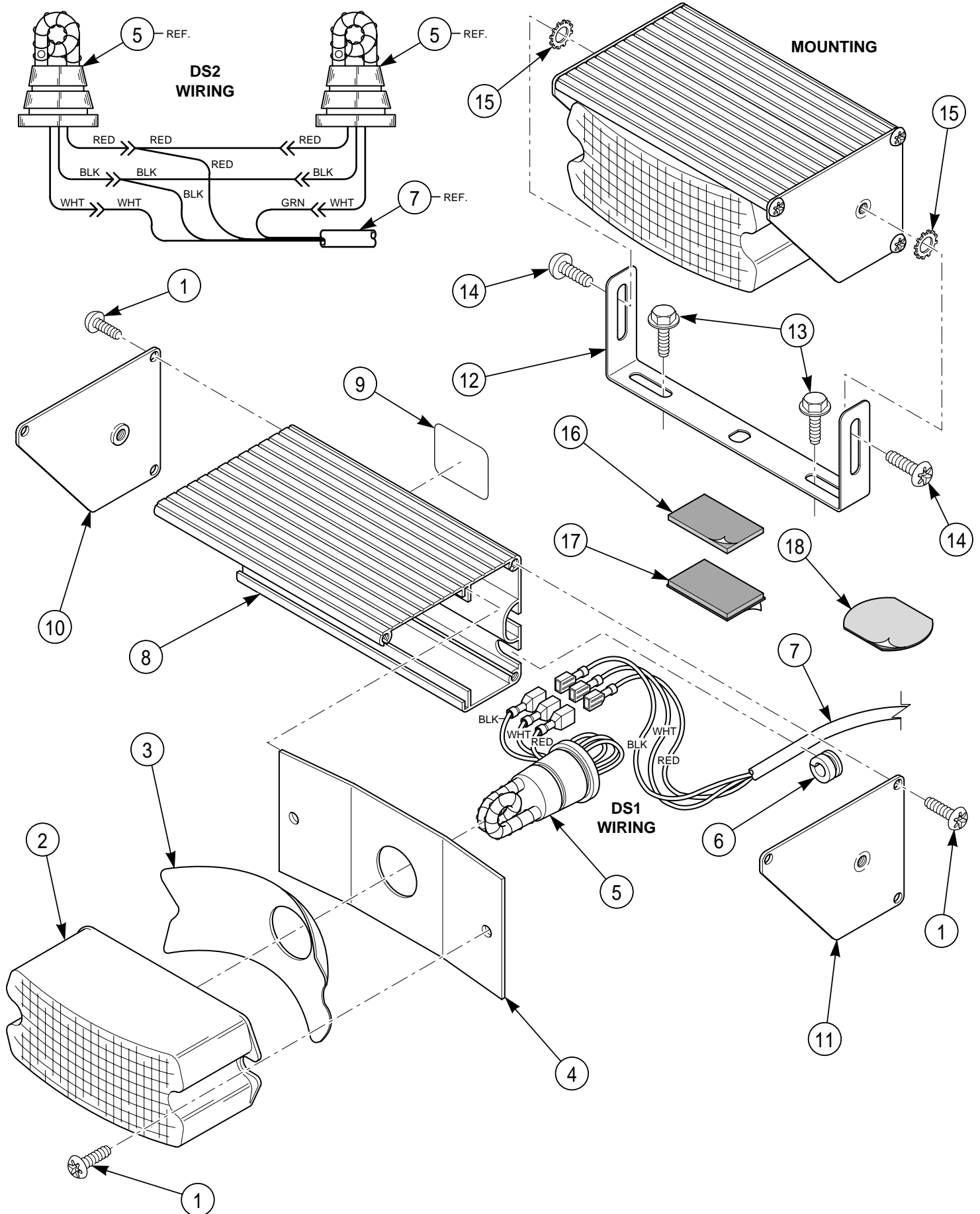


# DECK STROBE DS1 AND DS2 SERIES B



## Deck Strobe

### Models DS1 and DS2 SERIES B

PPL 0296  
PARTS LIST

Printed 1999

Item No.	Description	Part No.	DS1	DS2
1	Screw, #8-32 x 1/4" Type TT, Torx Pan Hd.	Z7011163B-04	8	10
2	Lens, Clear	Z8573001B	1AR	2AR
	Lens, Red	Z8573001B-01		
	Lens, Amber	Z8573001B-02		
	Lens, Blue	Z8573001B-03		
	Lens, Green	Z8573001B-04		
3	Reflector, Strobe	Z8573187A	1	2
4	Plate, Mounting, DS1	Z8575034A	1	0
	Plate, Mounting, DS2	Z8575035A	0	1
5	Tube Assembly, Strobe	CS1-C	1	2
6	Grommet, Split	Z228115A	1	1
7	Cable Assembly (3 conductors) DS1	Z175762A	1	0
	Cable Assembly (4 conductors) DS2	Z175765A	0	1
8	Extrusion, DS1	Z8573087A-04	1	0
	Extrusion, DS2	Z8573087A-02	0	1
9	Nameplate, Model DS1		1	0
	Nameplate, Model DS2		0	1
10	End Cap, Right	Z8573105A	1	1
11	End Cap, Left	Z8573106A	1	1
12	Bracket, Bail, DS1	Z8573040B	1	0
	Bracket, Bail, DS2	Z8573118A	0	1
	<b>Kit, Mounting</b> (Includes items 13 thru 18)	Z8575008A	1	1
13	Screw, 1/4 x 5/8" Type B, Hex Wsh. Hd.	Z7011165A-10	2	3
14	Screw, 1/4-20 x 5/8" Type TT, Pan Hd. Torx	Z7011161B-10	2	2
15	Lockwasher, 1/4" Ext. Tooth	Z7075078A	2	2
16	Velcro, Hook, 2" x 2-1/2"	Z8550A101A	1	1
17	Velcro, Loop, 2" x 2-1/2"	Z8550A100A	1	1
18	Pad, Adhesive, 2" x 2-1/2"	Z8550A031A	1	1

DO NOT ORDER PARTS BY ITEM NUMBER.  
Give model, description and part number.  
When a part number is not supplied, the part is **NOT** available.  
Refer to PARTS PRICE LIST (Part No. 1001) for prices of parts.

Federal Signal Corporation  
2645 Federal Signal Drive  
University Park, IL 60466

Printed in U.S.A.