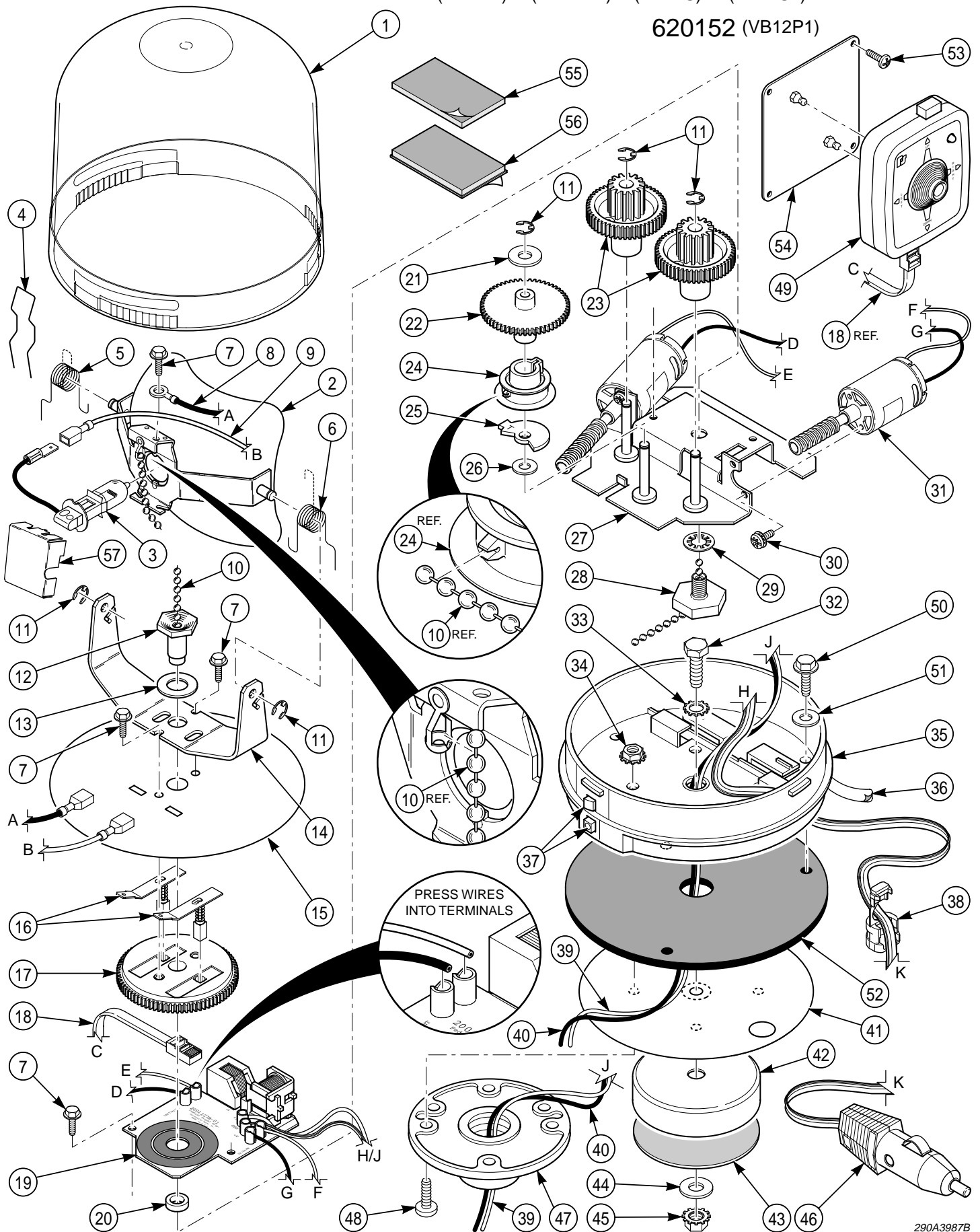


VisiBeam® II, SERIES B
620132, 620142, 620102, 620122, VB24S AND
(VB12M) (VB12M1) (VB12S) (VB12S1)

620152 (VB12P1)



VisiBeam® II, Series B

Models 620132, 620142, 620102, 620122, VB24S and 620152

PPL0321
PARTS LIST

(VB12M) (VB12M) (VB12M1) (VB12S1) (VB12P1)

January 2003

Item No.	Description	Part No.	620132 (VB12M)	620142 (VB12M1)	620102 (VB12S)	620122 (VB12S1)	VB24S	620152 (VB12P1)
1	Dome, Clear	Z8433001A						
	Dome, Red	Z8433001A-01						
	Dome, Amber	Z8433001A-02	1	1	1	1	1	1
	Dome, Blue	Z8433001A-03	AR	AR	AR	AR	AR	AR
	Dome, Green	Z8433001A-04						
	Dome, C.I.E. Blue	Z8433001A-05						
	Dome, Purple	Z8433001A-06						
2	Reflector And Bracket Assembly	Z8433095A	1	1	1	1	1	1
3	Lamp, 12 Volt Halogen H3-55 Watts	Z8107152A	1	0	1	0	0	0
	Lamp, 12 Volt Halogen H3-100 Watts	Z8107158A	0	1	0	1	0	1
	Lamp, 24 Volt Halogen H3-65 Watts	Z8107190A	0	0	0	0	1	0
4	Clip, Lamp	Z8433034A	1	1	1	1	1	1
5	Spring, Torsion-Left	Z8433027A	1	1	1	1	1	1
6	Spring, Torsion-Right	Z8433026A	1	1	1	1	1	1
	Bracket And Gear Assembly (Includes items 7 thru 9, 14, 16 & 17)	Z8433107A	1	1	1	1	1	1
7	Screw, #8-32 x 3/8" Hex Washer Head	Z7011A103-06	5	5	5	5	5	5
8	Wire, Terminated 18 AWG Black, 5.75"		1	1	1	1	1	1
9	Wire, Terminated 18 AWG Red, 5.75"		1	1	1	1	1	1
10	Chain, Steel Bead 1/8" Dia.	Z8433098A	1	1	1	1	1	1
11	Ring, Retaining	Z8284A024	5	5	5	5	5	5
12	Stud, Top (Brass)	Z8433092A	1	1	1	1	1	1
13	Washer, Flat 3/8"	Z7072A130A	1	1	1	1	1	1
14	Bracket, Upright	Z8433025A	1	1	1	1	1	1
15	Cover, Mechanism	Z8433033B	1	1	1	1	1	1
16	Brush Assembly	Z8433029A	2	2	2	2	2	2
17	Gear, Rotator	Z8433019A	1	1	1	1	1	1
18	Cable, Telephone, 25'	Z146903B	1	1	1	1	1	1
19	P.C. Board, Searchlight Relay (12 Volt)	Z2001127B	1	1	1	1	0	1
	P.C. Board, Searchlight Relay (24 Volt)	Z2001127B-01	0	0	0	0	1	0
20	Spacer, .15" x .50"	Z8433094A	1	1	1	1	1	1
	Mechanical Assy., 12 Volt (Includes items 7, 10, 11, 21-27, 30 & 31)	Z8433102A-01	1	1	1	1	0	1
	Mechanical Assy., 24 Volt (Includes items 7, 10, 11, 21-27, 30 & 31)	Z8433102A-04	0	0	0	0	1	0
21	Washer, Flat #10	Z7072A018	1	1	1	1	1	1
22	Gear, Timing	Z8433016B	1	1	1	1	1	1
23	Gear, Worm	Z8433015A	2	2	2	2	2	2
24	Drum, VisiBeam	Z8433096A	1	1	1	1	1	1
25	Stop Disk	Z8433097A	1	1	1	1	1	1
26	Washer, Flat 3/16"	Z7072A176A	1	1	1	1	1	1
27	Motor Support Assembly	Z8433036B	1	1	1	1	1	1
28	Stud, Bottom (Brass)	Z8433093A	1	1	1	1	1	1
29	Lockwasher, 5/16" Internal Tooth	Z7075A018	1	1	1	1	1	1
30	Screw, Machine #4-40 x 1/4" Slotted Torx Pan Head; Internal Sems	Z7006A016B-04	4	4	4	4	4	4
31	Motor And Worm Assembly, 12 Volt	Z8422B399A-01	2	2	2	2	0	2
	Motor And Worm Assembly, 24 Volt	Z8422528A	0	0	0	0	2	0
32	Screw, Machine 1/4-20 x 5/8" Hex Head	Z7000A311-10	1	1	0	0	0	0
33	Lockwasher, 1/4" External Tooth	Z7075A007	1	1	0	0	0	0
34	Nut, Hex #8-32 External Keys	Z7058A022	0	0	0	0	0	4
35	Base, VisiBeam	Z8433002B-01	0	0	1	1	1	1
	Base, VisiBeam	Z8433002B-02	1	1	0	0	0	0
36	Nameplate, Model 620132		1	0	0	0	0	0
	Nameplate, Model 620142		0	1	0	0	0	0
	Nameplate, Model 620102		0	0	1	0	0	0
	Nameplate, Model 620122		0	0	0	1	0	0
	Nameplate, Model VB24S		0	0	0	0	1	0
	Nameplate, Model 620152		0	0	0	0	0	1
37	Ratchet, Dome	Z8433003B	1	1	1	1	1	1
38	Bushing, Heyco Right Angle	Z231A160A	1	1	0	0	0	0
39	Wire, Terminated 18 AWG Red, 18"		0	0	1	1	1	1
40	Wire, Terminated 18 AWG Black, 18"		0	0	1	1	1	1
41	Seal, Vinylite	Z8433040A	0	0	0	0	0	1
	Seal, Mylar, Magnet Mounting	Z8433040A-01	1	1	0	0	0	0
42	Magnet Assembly	Z8550A012A-02	1	1	0	0	0	0
43	Magnet Cover, Mylar	Z1611464A-01	1	1	0	0	0	0
44	Washer, Flat 1/4"	Z7072A026	1	1	0	0	0	0
45	Nut, Hex 1/4-20 External Keys	Z7058A005	1	1	0	0	0	0
46	Plug And Cable Assembly (Shown)	Z8440B015	1	0	0	0	0	0
	Plug And Cable Assembly	Z8560029A-01	0	1	0	0	0	0
47	Flange, Pipe Mount	Z8241B017J-02	0	0	0	0	0	1
48	Screw, Machine #8-32 x 7/16" Phillips Pan Head	Z7000A408-07	0	0	0	0	0	4
49	Control Assembly	Z8433039B	1	1	1	1	1	1
	Kit, Accessory (Includes items 50 thru 56)	Z8433064A	0	0	1	1	1	0
50	Screw, #10 x 3/4" Type B Thd. Frm., Hex Washer Head	Z7011A122-12	0	0	3	3	3	0
51	Washer, Flat #10	Z7072A119	0	0	3	3	3	0
52	Gasket, Mounting	Z8433011B	0	0	1	1	1	0
	Kit, Accessory (Includes items 53 thru 56)	Z8433065A	0	0	0	0	0	1
	Kit, Accessory (Includes item 43 and items 53 thru 56)	Z8433104A	1	1	0	0	0	0
53	Screw, #6 x 5/8" Type A Thd. Frm., Phillips Pan Head	Z7011A011-10	4	4	4	4	4	4
54	Plate Assembly	Z8433045A	1	1	1	1	1	1
55	Velcro, Hook 2" x 2 1/2"	Z8550A100A	1	1	1	1	1	1
56	Velcro, Loop 2" x 2 1/2"	Z8550A101A	1	1	1	1	1	1
57	Lightshade, VisiBeam	Z8433106A	1	1	1	1	1	1

DO NOT ORDER PARTS BY ITEM NUMBER.
Give model, description and part number.
When a part number is not supplied, the part is **NOT** available.
Refer to PARTS PRICE LIST (Part No. 1001) for prices of parts.

Federal Signal Corporation
2645 Federal Signal Drive
University Park, IL 60466

Printed in U.S.A.