

## Safety Message for Installers and Operators

People's lives depend on your safe installation of our products. It is important to read, understand and follow all instructions shipped with the products. Listed below are some other important safety instructions and precautions you should follow:

- To properly install this product, you must have a good understanding of automotive electrical procedures and systems, along with proficiency in the installation and use of safety warning equipment.
- When drilling into a vehicle structure, ensure that both sides of the surface are clear of anything that could be damaged.
- In order for the light to function properly, a separate ground connection must be made. If practical, it should be connected to the negative battery terminal. At a minimum, it may be attached to a solid metal body or chassis part that will provide an effective ground path as long as the light system is to be used.
- Locate light control so the VEHICLE and CONTROL can be operated safely under all driving conditions.
- Do not attempt to activate or deactivate the light control while driving in a hazardous situation.
- Frequently inspect the light to ensure that it is operating properly and is securely attached to the vehicle.
- File these instructions in a safe place and refer to them when maintaining and/or reinstalling the product.

Failure to follow all safety precautions and instructions may result in property damage, serious injury, or death to you or others.

## Self-Leveling Bracket Kit

### Overview

This kit provides a means to mount a mini light bar to a moving surface, such as a dump bed cab protector. It will keep the bar parallel with the ground as the dump bed is raised. It will accept HighLighter® ELITE™, 14-inch Escape®, HighLighter® LED Micro, Pro LED Beacons, Spire® Beacons, and raised and flat mount Turbo Beam® mini light bars.

### Unpacking the Kit

After unpacking the components, inspect them for damage that may have occurred in transit. If the unit has been damaged, do not attempt to install or operate it. File a claim immediately with the carrier, stating the extent of the damage. Carefully check all envelopes, shipping labels, and tags before removing or destroying them. Ensure that the parts listed are contained in the packing carton.

**Table 1 Kit 1 Contents List**

Qty.	Description	Part Number
1	Base bracket	8620224
1	Left hinge bracket	8620225
1	Right hinge bracket	8620225-01
2	Brass-bushing	230301
8	Flat Washer	7072A035
2	Felt Washer	7076034
4	Self-locking Nut	7058A013
4	Screw, 3/8-16, 1.25-inch	7002A009-20

**Table 2 Kit 2 Contents List**

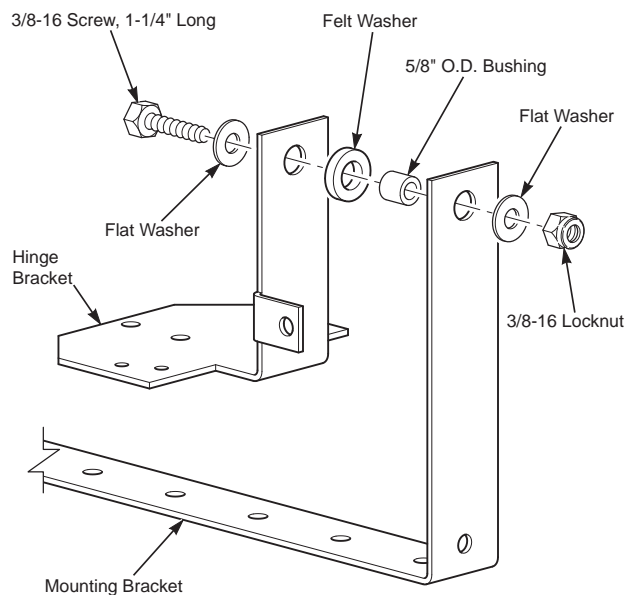
Qty.	Description	Part Number
1	Base bracket	862003969
1	Mounting bracket	862003968
2	Brass-bushing	230301
8	Flat Washer	7072A035
2	Felt Washer	7076034
4	Self-locking Nut	7058A013
4	Screw, 3/8-16, 1.25-inch	7002A009-20

### Installing the Kit

To install the bracket:

1. Select the mounting location that provides the best warning signal for the vehicle and its use.
2. Assemble the hinge brackets to the mounting base. See Figure 1 for the order that the parts are to be arranged. Place the felt washer between the hinge bracket and mounting base. Soak the felt washer in light oil before assembling.

**Figure 1 Exploded View**



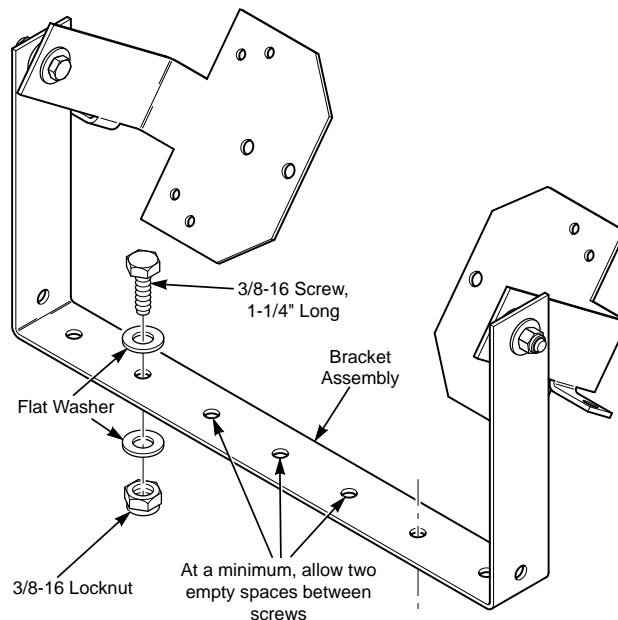
#### NOTICE

**DRILLING PRECAUTIONS:** When drilling holes, check the area you are drilling into to ensure that you do not damage vehicle components while drilling. All drilled holes should be deburred, and all sharp edges should be smoothed. All wire routings going through drilled holes should be protected by a grommet or convolute/split loom tubing.

3. Attach the assembly to the mounting surface. See Figure 2. Place the assembly onto the mounting surface. Select and mark two holes for drilling. There are seven 3/8-inch holes in the mounting bracket. Select two that provide the best arrangement for the particular installation. If there are no limitations to where the holes can be located, use the left and right outermost. There should be a minimum of two unused screw locations

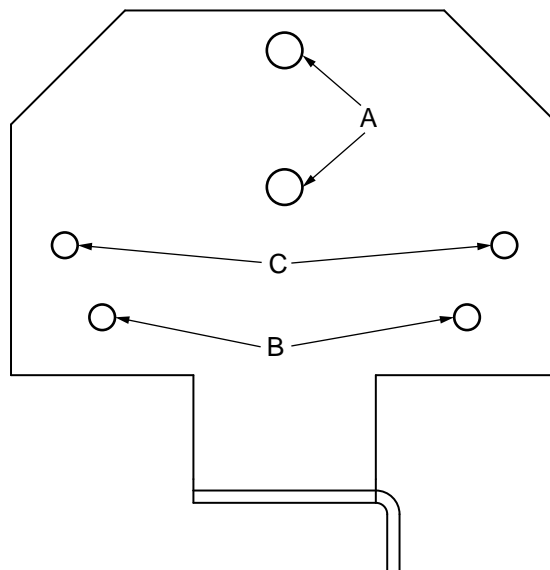
between the mounting screws for a sturdy installation.

**Figure 2 Affixing the Bracket**



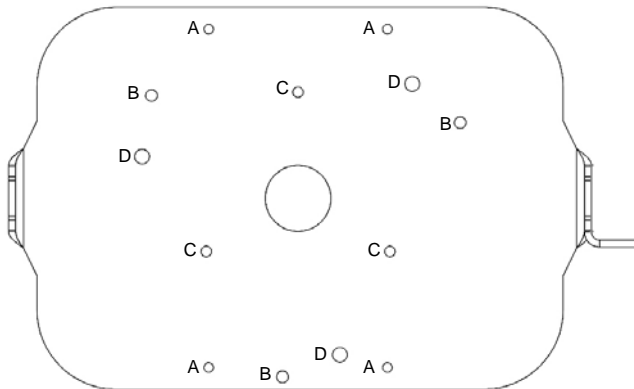
4. Mount the bracket to the vehicle using the provided hardware. The hinge brackets have stop tabs that should be to the rear on most installations. The assembly should swing freely when the dump bed is raised.
5. Mount the bar to the hinge brackets. See Figures 3 and 4 for diagrams of the holes that are to be used for each type of light. Use the hardware provided with the light bar or specified in the light bar's installation instructions.

**Figure 3 Kit 1**



- The holes marked “A” are for 15-inch Escapes or raised base Turbo Beams.
- The holes marked “B” are for the HighLighter® ELITE.
- The holes marked “C” are for flat plate Turbo Beams.

Figure 4 Kit 2



- The holes marked “A” are for the HighLighter LED Micro with a permanent mount.
- The holes marked “B” are for the Pro LED Beacon.
- The holes marked “C” are for the Spire® Core and HighLighter LED Micro Core.
- The holes marked “D” are for the Spire Beacon with a die cast mount.

#### ⚠ CAUTION

**HIGH CURRENT ARCING: Do not connect this system to the vehicle battery until ALL other electrical connections are made and you have verified that no shorts exist. High current conductors can cause hazardous sparks or burning wire, resulting in electrical fires.**

6. Make the electrical connections to the light. Refer to the individual instructions for the light that is being installed for specific installation instructions.

Route the wires in a manner that keeps them from tangling in the hinge. The stop tabs and mounting bracket have holes for routing the wires through them while holding them out of the way of the moving parts. Loop the wires once to provide enough slack for full movement. Use

grommets if the power cable is thin enough to pass through the holes. Thicker cables may be fastened to the bracket with installer-provided wire ties.

#### Maintaining the Unit

Inspect the light frequently to ensure that it is in working order and securely mounted to the vehicle.

The felt washer should be oiled with light oil as part of the vehicle’s regular maintenance procedure.

#### Getting Technical Support and Service

For technical support and service, please contact:

Service Department  
Federal Signal Corporation  
Phone: 1-800-433-9132  
Email: [empserviceinfo@fedsig.com](mailto:empserviceinfo@fedsig.com)  
[www.fedsig.com](http://www.fedsig.com)

#### Getting Repair Service

The Federal Signal factory provides technical assistance with any problems that cannot be handled locally.

Any units returned to Federal Signal for service, inspection, or repair must be accompanied by a Return Material Authorization (RMA). Obtain an RMA from a local Distributor or Manufacturer’s Representative.

Provide a brief explanation of the service requested or the nature of the malfunction.

Address all communications and shipments to the following:

Federal Signal Corporation  
Service Department  
2645 Federal Signal Drive  
University Park, IL 60484-3167



**FEDERAL SIGNAL**  
Safety and Security Systems

2645 Federal Signal Drive  
University Park, Illinois 60484-3167

[www.fedsig.com](http://www.fedsig.com)

Customer Support

Police/Fire-EMS: 800-264-3578 • +1 708 534-3400

Work Truck: 800-824-0254 • +1 708 534-3400

Technical Support 800-433-9132 • +1 708 534-3400

© Copyright 2021 Federal Signal Corporation

All product names or trademarks are properties of their respective owners.