

INSTRUCTION SHEET FOR MODEL FL3 FEDERAL NIGHT-FIGHTER® SPOT-FLOOD EMERGENCY WORK LIGHT

A. GENERAL.

The Model FL3 is a three-lamp work light which has a single watertight switch which controls spot or flood illumination. It can be easily hand-swiveled to 360° horizontal, 60° downward and 90° upward, and locked in place.

B. ADJUSTMENT.

WARNING

During and immediately after operation, the lamp housing is extremely hot. Gloves are recommended for aiming.

Vertical aiming of the work light is accomplished by rotating the locking lever downward and tilting the unit to the desired position. Lifting the locking lever should then lock the work light into position. If the locking lever does not lock the work light into position, proceed as follows (see figure 1):

1. Loosen the set screw in the locking lever hub and disengage it from the yoke hub.
2. Rotate the locking lever assembly downward so that the aligning pins engage the next set of holes in the yoke hub.
3. Rotate the locking lever upward to check that the work light locks in position. If the work light does not lock, repeat steps 2 and 3.
4. Retighten the set screw in the locking lever hub.

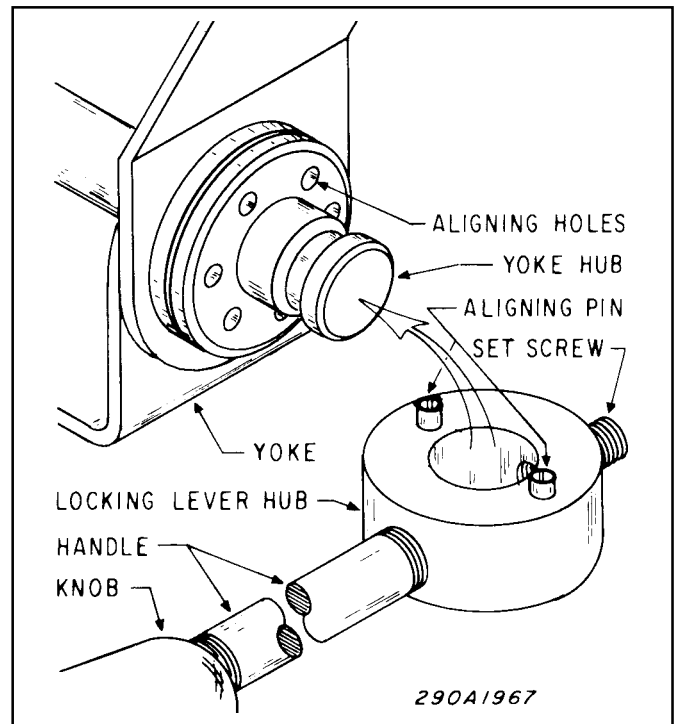


Figure 1. Locking Lever Adjustment.

C. LAMP REPLACEMENT.

WARNING

Disconnect light from power source before lamping or servicing. Allow unit to cool if it has been in operation. Use gloves when handling hot fixture.

1. Remove the retaining screw from the retaining band (see figure 2). Lift the retaining band from the light.

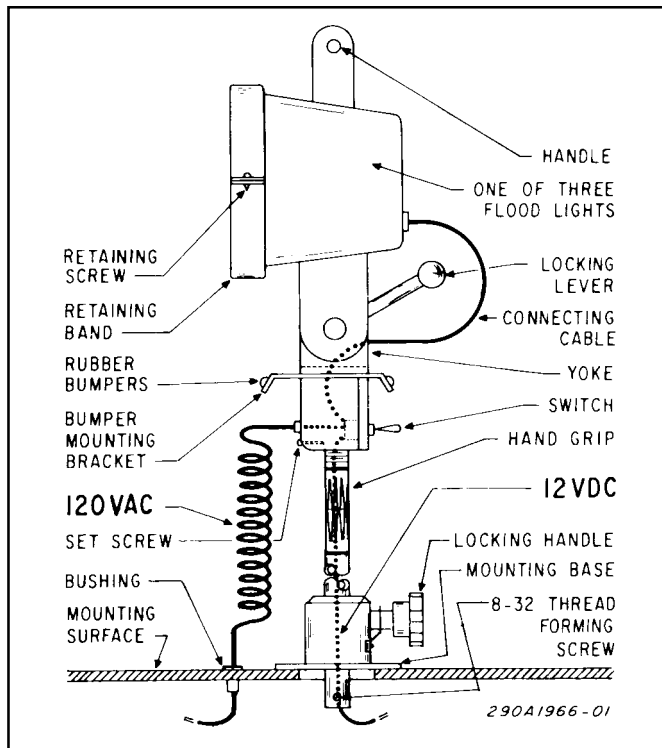


Figure 2. Retaining Band Removal.

2. Pull the faulty lamp out of the housing and disconnect the power leads from the rear of the lamp. Refer to Table 1 for the applicable lamp type for your unit.

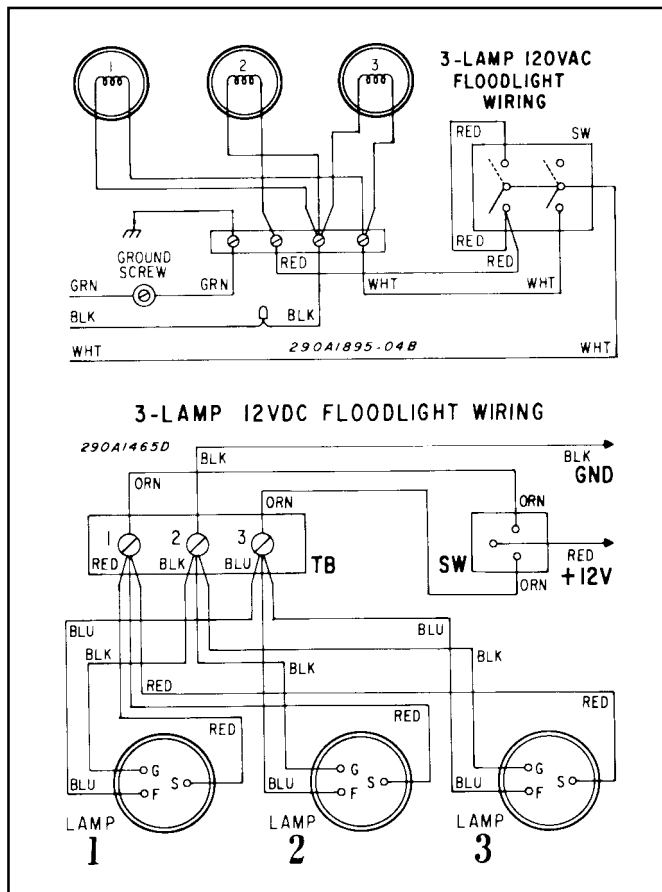


Figure 3. Wiring Diagrams.

3. See figure 3. Connect the power leads to the terminals on the replacement lamp(s).

4. 120VAC Units Only. When installing the replacement lamp in the housing, ensure that the boss on the edge of the lamp engages the notch on the front edge of the lamp housing. NOTE: The large silicone O-ring seats against the back surface of the lamp.

5. 12VDC Units Only. When installing a replacement lamp, ensure that the numeral "2" cast into the front of the lamp is to the right when the lamp is viewed from the front (see figure 4). Then, make sure the bosses on the edge of the lamp engage the notches on the front edge of the lamp housing.

6. Replace the retaining ring on the lamp and lamp housing, making sure that the longer flange on the ring faces the front of the lamp and lamp housing. Replace and tighten the retaining screw.

Table 1. Replacement Lamps

Model	Lamp No.	Lamp Part No.
FL3SF-012SB	4007	8107A117
FL3ST-120	200PAR46/3NSP	8442A039
FL3SP-120	200PAR46/3NSP	8442A039
FL3FT-120	200PAR46/3MFL	8107A133
FL3FP-120	200PAR46/3MFL	8107A133

NOTE: Switch Part No. is 122A217.

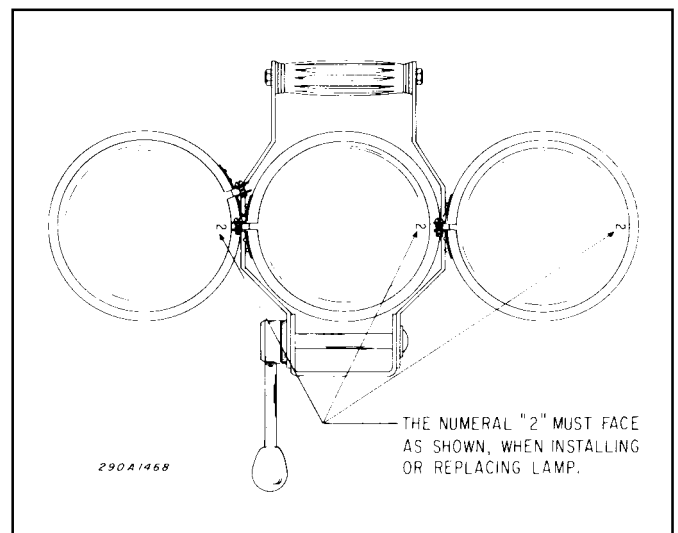


Figure 4. Front View, 12VDC Units.