

## INSTALLATION INSTRUCTIONS FOR 8280065B-K Q-SIREN CLUTCH KIT

### SAFETY MESSAGE TO INSTALLERS

People's lives depend on your safe installation of our products. It is important to read, understand and follow all instructions shipped with this product. In addition, listed below are some other important safety instructions and precautions you should follow:

- To properly install this siren: you must have a good understanding of automotive electrical procedures and systems, along with proficiency in the installation and use of safety warning equipment.
- All effective sirens produce loud sounds which may cause, in certain situations, permanent hearing loss. You should take appropriate precautions such as wearing hearing protection.
- Install the siren in a location which provides maximum signalling effectiveness and minimizes the sound reaching the vehicle's occupants.
- When drilling or cutting into a vehicle structure, be sure that both sides of the surface are clear of anything that could be damaged.
- Locate siren controls so VEHICLE and CONTROLS can be operated safely under all driving conditions.
- After installation and testing are complete, provide a copy of this instruction sheet to all operating personnel.
- File these instructions in a safe place and refer to them when maintaining and/or reinstalling the product.

Failure to follow all safety precautions and instructions may result in property damage, serious injury, or death to you or others.

### A. GENERAL.

This instruction sheet provides directions for installation of the 8280065B-K Q-Siren Clutch Kit.

### B. UNPACKING.

After unpacking the siren, inspect it for damage that may have occurred in transit. If the unit has been damaged, do not attempt to install or operate it. File a claim immediately with the carrier, stating the extent of damage. Carefully check all envelopes, shipping labels and tags before removing or destroying them.

Before attempting to install the siren, ensure that the parts shown in the KIT CONTENTS LIST have been included.

### C. KIT CONTENTS LIST.

Qty	Description	Part Number
1	Rotor Assembly	8280A065
2	Spring Washers	7074A054
1	Flat Washer	7072A140
1	Lock Nut	7058A036

### D. INSTALLATION.

#### WARNING

Electronically controlled transmissions may malfunction during operation of this siren. Consult the vehicle manufacturer BEFORE installing this siren in vehicles equipped with electronically controlled transmissions.

#### CAUTION

All effective sirens produce loud sounds which may cause, in certain situations, permanent hearing loss. Therefore, install the siren in a location which provides maximum signalling effectiveness and minimizes the sound reaching the vehicle's occupants.

#### WARNING

Any attachment to the Q-Siren or other alteration of the product may reduce its ability to warn and may interfere with the Q-Siren's ability to meet applicable industry standards. Federal Signal does not recommend or approve the use of any sound focusing device or other attachments to the Q-Siren. The unauthorized use of a sound focusing device or other attachment could result in serious injury or death.

To install the clutch kit, see figure 1 and proceed as follows:

1. Disconnect power to the siren at the positive battery terminal.
2. Remove and retain the four screws which secure the grille to the siren. Remove the grille.
3. Remove and retain the three screws which secure the chromed motor housing to the siren. Remove the motor housing.
4. Remove and retain the three screws which secure the clutch cap on the front of the siren.
5. Using an appropriate wrench, hold the motor shaft at the rear of the siren. While holding the motor shaft, loosen the lock nut on the front of the

motor shaft. Remove and discard the lock nut and washers from the front of the motor shaft.

6. Remove the clutch assembly.
7. Pull the rotor assembly out and retain it for return to the factory.
8. Install the new rotor assembly with the clutch assembly facing forward.
9. Install the washers (flat washer first, then the spring washers) and lock nut on the front of the motor shaft as shown in figure 1.
10. Torque the lock nut to 35-40 ft./lbs.
11. Reinstall the clutch cap, motor housing, and the grille on the siren.

12. Reconnect power to the siren at the positive battery terminal and test for proper operation.

**E. MAINTENANCE.**

**WARNING**

To prevent accidental activation of siren and possible electric shock, disconnect the battery terminals before any maintenance operation is performed.

**CAUTION**

The use of cleaning agents such as strong detergents, solvents, petroleum products, etc. can damage the chrome plated surfaces.

Ordinary cleaning of the chrome plated parts can be accomplished by using a mild soap and water solution and a soft rag. Should fine scratches or a haze appear on the chrome parts, they can ordinarily be removed with a non-abrasive, high quality, one-step, automotive paste cleaner/wax and a soft cloth.

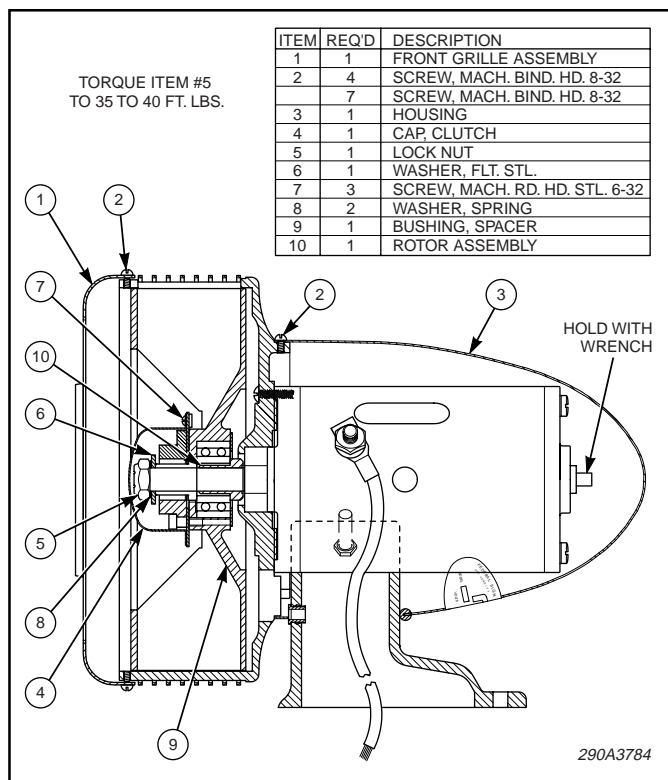


Figure 1.