

# DynaMax®/ES100C

Speaker



## FEATURES

- Slim and lightweight compact 100 W speaker
- Neodymium driver delivers superior sound quality
- Weather-resistant, composite plastic housing
- Compatible with all Federal Signal electronic siren amplifiers
- Vehicle-specific mounting brackets available
- Two-year warranty

### Sleek Design Meets High-Performance

The slim shape and lightweight design are ideal for most police cars, fire trucks, and work truck applications. DynaMax®/ES100C is a 100 W speaker designed to withstand the harshest conditions. This speaker features the Federal Signal Neodymium driver for increased performance and reliability.

DynaMax/ES100C housing is molded from composite plastic — 30% glass-filled PET (polyethylene terephthalate). This high-strength composite material provides chemical resistance and maintains rigidity at high temperatures.

A variety of vehicle-specific DynaMax/ES100C mounting brackets are available to make installation simple.

## APPROVALS

- SAE J1849 and CCR Title 13 specifications when paired with Class A Federal Signal amplifier and electronic siren



Flush mount with grille  
ESFMT-EF



## HOW TO ORDER

<b>ES100C</b>	Speaker, ES100C/DynaMax, 100 W, high output, compact, Class A
<b>ES100C-DEU</b>	Speaker, ES100C/DynaMax, 100 W, high output, compact, Class A, with Deutsch connector

### UNIVERSAL BRACKETS AND MOUNTS

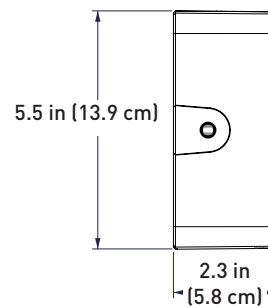
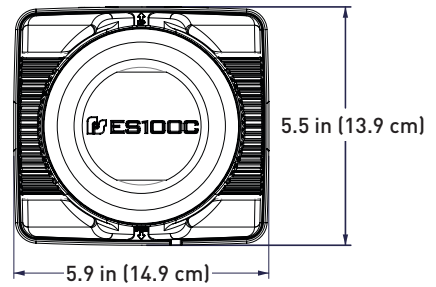
<b>ESB-U</b>	Bracket only - (1) ES100C
<b>ESB-L</b>	Bracket only— (1) ES100C, Multiple orientation "L" bracket
<b>ESFMT-EF</b>	Recess mount, stainless steel Electric "F" grille
<b>ESBMT-SB</b>	Bumper/surface mount
<b>ESFMT-EFB</b>	Flush mount, Black grille



(2) ES100 speakers mounted behind the center bar of the DFC push bumper on a Ford Police Interceptor Utility

## SPECIFICATIONS

<b>POWER</b>	100 W
<b>HOUSING MATERIAL</b>	Composite plastic (30% glass-filled PET)
<b>OPERATING TEMP</b>	-40° to +176° F (-40° to +80°C)
<b>INPUT VOLTAGE</b>	32 Vrms
<b>PHYSICAL SPECIFICATIONS</b>	
<b>LENGTH</b>	5.9 in (14.9 cm)
<b>WIDTH</b>	2.3 in (5.8 cm)
<b>HEIGHT</b>	5.5 in (13.9 cm)
<b>SHIP WEIGHT</b>	
<b>SPEAKER ONLY</b>	5.0 lb (2.3 kg)
	5.3 lb (2.4 kg)



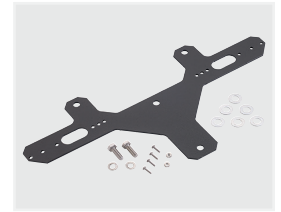
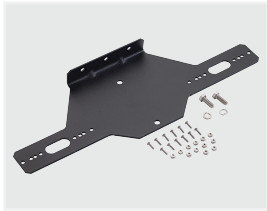
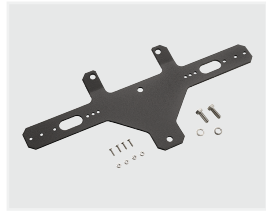
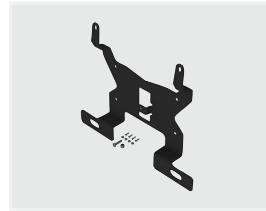
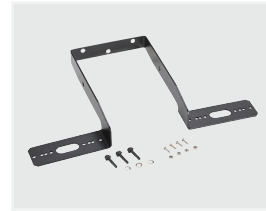
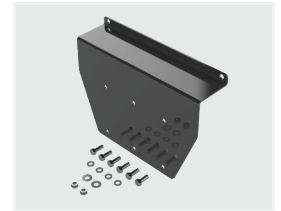
## VEHICLE SPECIFIC ACCESSORIES AND KITS

VEHICLE	YEAR	TYPE OF BRACKET	MODEL
<b>FORD</b>			
Expedition	2018-2021	No drill, dual ES100C and Rumbler speaker bracket only— (2) ES100C, (2) Rumbler woofers	ESBR2-EXP18
F-150	2015-2017	Bracket only - (1) ES100C, will not work with Ecoboost models	ESB-FRD15
F-150	2021-2025	No drill, dual speaker bracket only - (2) ES100C, compatible with models equipped with active air shutters and lower active air dam	ESB2-FRD21ND
F-150/Responder	2015-2025	No drill, dual speaker bracket only - (2) ES100C, Ecoboost models only, not compatible with active lower air dam	ESB2-FRD15ND
F-150 Lightning	2022-2023	No drill, bracket only - (1) ES100C	ESB-FRDL22ND
F-150 Lightning	2022-2023	No drill, dual speaker bracket only - (2) ES100C	ESB2-FRDL22ND
F-250/350/450	2020-2025	Universal, (1) ES100C	ESB-U
Mustang	2024	No drill, bracket only - (1) ES100C, EcoBoost and GT models without Performance Package	ESB-MUST24ND
Mustang	2024	No drill, combination bracket kit - (2) ES100C and (4) MPS6U or (4) MPS12U lights behind grille, Ecoboost and GT models with Performance Package option	ESBL2-MUST24ND
Interceptor Utility	2020-2024	Combination bracket kit - (1) ES100C or (1) AS124 and (2) MPS* lights behind grille, will not work with hybrid models	ESBL-FPIU20
Interceptor Utility	2020-2024	No drill, bracket only - (1) ES100C or (1) AS124, for use with push bumpers	ESB-FPIU20NDB
Interceptor Utility	2020-2024	No drill, dual speaker bracket only - (2) ES100C or (2) AS124, for use with push bumpers	ESB2-FPIU20NDB
Interceptor Utility	2025-2026	Combination bracket kit — (1) ES100C and (2) MPS lights behind grille, will not work on hybrid models	ESBL-FPIU25
Interceptor Utility	2025-2026	No drill, bracket only — (1) ES100C or (1) AS124, compatible with push bumpers	ESB-FPIU25NDB
Interceptor Utility	2025-2026	No drill, dual speaker bracket only — (2) ES100C or (2) AS124, compatible with push bumpers	ESB2-FPIU25NDB
<b>DODGE</b>			
Charger	2015-2023	Combination bracket kit - (1) ES100C and (2) MPS* lights behind grille, does not mount with Rumbler	ESB-CHGR15
Charger	2015-2023	Dual Speaker bracket only - (2) ES100C, does not work with adaptive cruise control option	ESB2-CHGR15
Charger	2015-2023	No drill,(1) ES100C, mounts speaker to hood latch assembly	ESB-CHGR15ND
Durango SSV Pursuit	2015-2026	Combination bracket kit - (1) ES100C and (2) MPS* lights behind grille	ESB-DUR15
Durango Pursuit	2021-2026	No drill, combination dual bracket kit — (2) ES100C and (2) MPS3U/MPS6U/MPS12U/MPSW9 lights behind grille	ESBL2-DUR21ND
Ram SSV & Classic	2016-2025	Combination bracket kit - (1) ES100C and (2) MPS* lights behind grille (not compatible with active air shutters)	ESBL-RAM16
Ram Classic	2019-2025	Universal, (1) ES100C	ESB-U
Sprinter	2019	Driver side bumper mount - (1) ES100C	ESB-SPRNT19-D
Sprinter	2019	Passenger side bumper mount - (1) ES100C	ESB-SPRNT19-P
<b>CHEVROLET</b>			
Silverado 1500	2022-2024	No drill, combination bracket kit - (1) ES100C and (2) MPS* lights behind grille	ESBL2-SIL22ND
Silverado HD	2019-2021	No drill, bracket only (1) ES100C on Driver's side	ESB-SILHD20ND
Silverado HD	2019-2021	No drill, dual brackets - (1) ES100C on Driver's side and (1) ES100C on Passenger's side	ESB2-SILHD20ND
Tahoe	2025	No drill, combination bracket kit - (2) ES100C and (2) MPS* lights behind grille	ESBL2-TAH21ND
Tahoe	2025	No drill, dual brackets (2) ES100C	ESB2-TAH21ND
<b>VEHICLE SPECIFIC KITS</b>			
Kenworth, GM Van, Ford F-650, Ford E-250/450	All	Kit, includes (2) ES100C speakers and (2) ESFMT-EF	ES100-ESFMT-EF


**ESB-U**

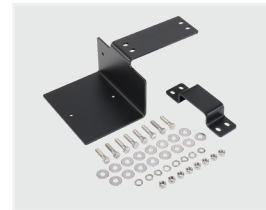
**ESBMT-SB**

**ESFMT-EF**

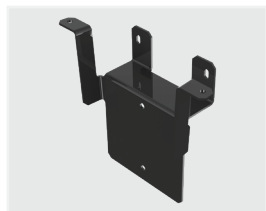
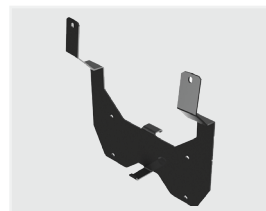
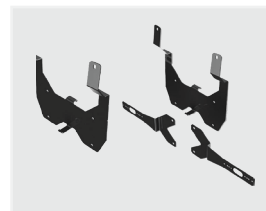
**ESB-FRD15**

**ESB-DUR15**

**ESB-CHGR15**

**ESBL-RAM16**

**ESBL2-SIL22ND**

**ESBL-FPIU20**

**ESB2-CHGR15**

**ESB2-FRD15ND**

**ESB-SILHD20ND**

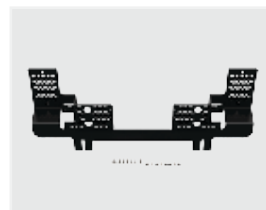
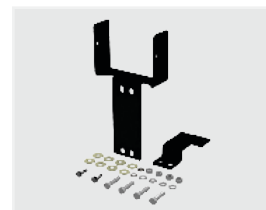
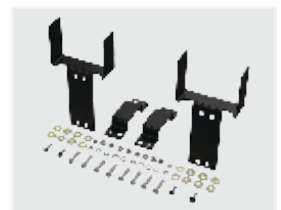
**ESB2-SILHD20ND**

**ESB-FPIU20NDB**

**ESB2-FPIU20NDB**

**ESB-L**

**ESB-CHGR15ND**

**ESB2-TAH21ND**

**ESBL2-TAH21ND**

**ESB2-FRD21ND**

**ESBL2-DUR21ND**

**ESB-MUST24ND**

**ESBL2-MUST24ND**

**ESB-FPIU25NDB**

**ESB2-FPIU25NDB**


Warning: Sirens and Speakers may produce LOUD sounds necessary to request the right-of-way. Sirens and Speakers may cause hearing damage. Wear hearing protection.

DynaMax is a registered trademarks of Federal Signal Corporation.  
EcoBoost is a registered trademark of Ford Motor Company.  
Ford, Chevrolet, and Dodge are all trademarks of their respective owners.