



25500935 Rev. A0 0824

Safety Message to Installers of Warning Light Equipment

⚠ WARNING

People’s lives depend on your proper installation and servicing of Federal Signal products. It is important to read and follow all instructions shipped with this product and the original product. Listed below are some other important safety instructions and precautions you should follow:

- To properly install a light assembly, you must have a good understanding of automotive electrical procedures and systems, along with proficiency in the installation and use of safety warning equipment.
- Do not install equipment or route wiring in the deployment path of an airbag.
- If a vehicle seat is temporarily removed, verify with the vehicle manufacturer if the seat needs to be recalibrated for proper airbag deployment.
- When drilling into a vehicle structure, ensure that both sides of the surface are clear of anything that could be damaged.
- To be an effective warning device, this product produces bright light that can be hazardous to your eyesight when viewed at close range. Do not stare directly into this lighting product at close range, or permanent damage to your eyesight may occur.
- Frequently inspect the light system to ensure that it is operating properly and is securely attached to the vehicle.
- Refer to the instruction sheets included with related products for additional precautions and information.
- File these instructions in a safe place and refer to them when maintaining or reinstalling the product.

Failure to follow all safety precautions and instructions may result in property damage, serious injury, or death.

Overview

This publication has instructions for using the MP3M3U-FRD24DTL and MP3M3U-FRD24DTL2 Mounting Kits to mount MicroPulse® MP3M3U light heads to the taillight brackets of the Ford Super Duty (P702).

NOTE: For electrical installation instructions, refer to the installation and maintenance instructions packed with the light head.

Unpacking the Kit

After unpacking the kit, inspect it for damage that may have occurred in transit. If it has been damaged, do not attempt to install or operate it. File a claim immediately with the carrier, stating the extent of damage. Carefully check all envelopes, shipping labels, and tags before removing or destroying them. Ensure that the parts listed in Table 1 or Table 2 are included in the package. If you are missing any parts, contact Customer Support at 1-800-264-3578, 7 a.m. to 5 p.m., Monday through Friday (CT).

Table 1 MP3M3U-FRD24DTL kit contents

Qty	Description	Part No.
1	MicroPulse® Bracket, Tailgate, F-150, Driver Side	861304505-DS
1	MicroPulse Bracket, Tailgate, F-150, Passenger Side	861304505-PS
4	#6-32 Keps® Nut, Stainless Steel	7058A046
4	#6-32 Phillips® Screw, Stainless Steel	7000491A-08
1	Extrusion, Rubber, 13.5 inches	205003-01

Table 2 MPSM3U-FRD24DTL2 kit contents

Qty	Description	Part No.
1	MicroPulse® Bracket, Tailgate, F-150, Driver Side	861304504-DS
1	MicroPulse® Bracket, Tailgate, F-150, Passenger Side	861304504-PS
8	#6-32 Keps® Nut, Stainless Steel	7058A046
8	#6-32 Phillips® Screw, Stainless Steel	7000491A-08
1	Extrusion, Rubber, 13.50 inches	205003-01

Installing the Lights

IMPORTANT: Plan all cable routing before installation.

⚠ WARNING

AIRBAG DEPLOYMENT: Do not install equipment or route wiring in the deployment path of an airbag. Failure to observe this warning will reduce the effectiveness of the airbag or potentially dislodge the equipment, causing serious injury or death.

NOTICE

DRILLING PRECAUTIONS: Before drilling holes, check the area into which you plan to drill to ensure that you do not damage vehicle components. All drilled holes should be deburred, and all sharp edges should be smoothed. All wires going through drilled holes should be protected by a grommet or convolute/split-loom tubing.

Two brackets are to be installed, with one bracket on either side of the vehicle.

To install the brackets:

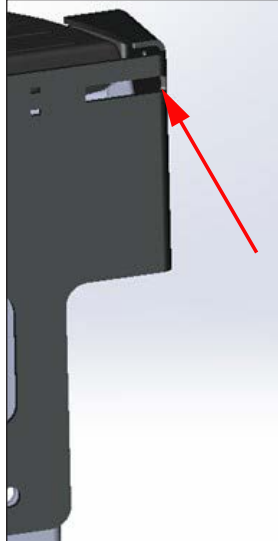
1. Remove the top Torx® screw and the top rear lamp assembly screw shown in Figure 1.

Figure 1 Remove screws



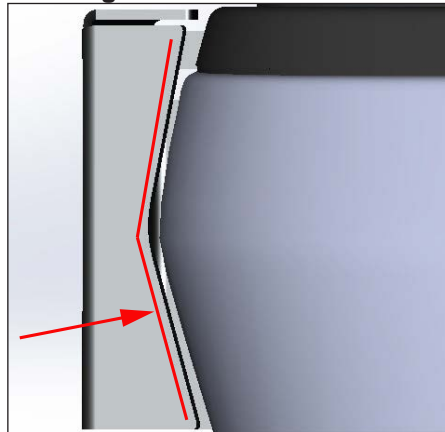
2. Attach the light head onto the bracket with the supplied #6 nuts and screws. Route the power cable through the rectangular cutout on the side bend of the bracket to avoid pinching the cable with the tailgate. See Figure 2.

Figure 2 Attach light head to bracket



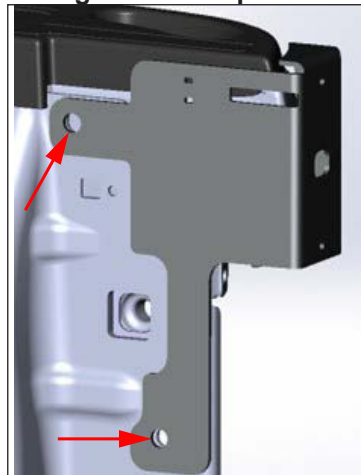
3. Add the supplied rubber edge trim to the curved edge of the bracket that meets the outer profile of the truck. See Figure 3.

Figure 3 Add rubber trim



4. Line up the hole at the top of the bracket with the Torx® screw hole and the bottom bracket hole with the rear lamp assembly hole as shown in Figure 4.

Figure 4 Line up holes



5. Reinstall the Torx® screw and then reinstall the top rear lamp assembly screw.
6. Repeat steps 1-5 for the other bracket.
7. Complete the wiring according to the instructions supplied with the light heads.

⚠ WARNING

LIGHT HAZARD: To be an effective warning device, an emergency warning system produces bright light that can be hazardous to your eyesight when viewed at a close range. Do not stare directly into the lights at a close range, or permanent damage to your eyesight may occur.

8. Test the lights for proper operation.

Getting Technical Support and Service

For technical support and service, please contact:

Service Department
Federal Signal Corporation
Phone: 1-800-433-9132
Email: empserviceinfo@fedsig.com

Getting Repair Service

The Federal Signal factory provides technical assistance with any problems that cannot be handled locally. Any product returned to Federal Signal for service, inspection, or repair must be accompanied by a Return Material Authorization (RMA). Obtain an RMA from a local Distributor or Manufacturer's Representative. Provide a brief explanation of the service requested or the nature of the malfunction.

Address all communications and shipments to the following:

Federal Signal Corporation
Service Department
2645 Federal Signal Dr.
University Park, IL 60484-3167



FEDERAL SIGNAL

Safety and Security Systems

2645 Federal Signal Drive
University Park, Illinois 60484

www.fedsig.com

Customer Support

Police/Fire-EMS: 800-264-3578 • +1 708 534-3400

Work Truck: 800-824-0254 • +1 708 534-3400

Technical Support 800-433-9132 • +1 708 534-3400

© 2024 Federal Signal Corporation. All rights reserved worldwide.

All product names or trademarks are properties of their respective owners.