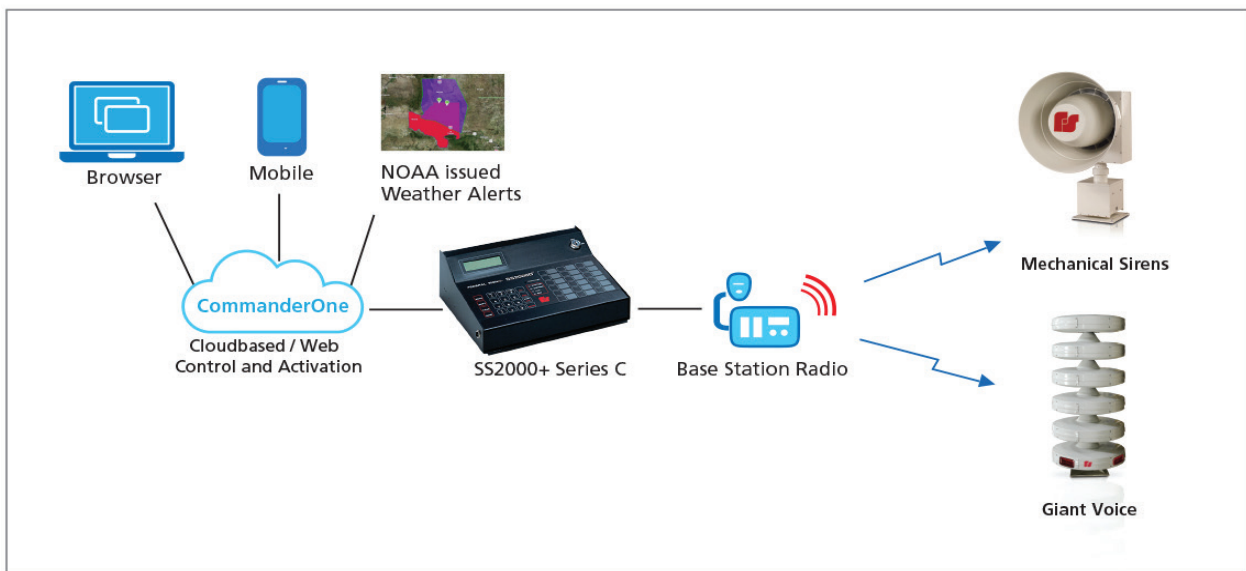


► CommanderOne® LE

## Cloud-Based Control for One-Way Warning Systems

CommanderOne® LE brings the speed, security and convenience of our Two-Way CommanderOne platform to One-Way siren systems. Now, you can upgrade your One-Way systems to web and app-based control in an easy and affordable way. Utilizing our new CommanderOne-enabled SS2000+ Series C Local Hardware Activation Point, our engineers can quickly setup a CommanderOne LE Account and have you activating your One-Way sirens from a web browser or mobile app with no additional servers or software needed. The SS2000+ Series C is a drop-in replacement for existing SS2000D and SS2000+ owners with Radio-based One-Way systems, hotkeys, functions and settings can be brought over during commissioning.

Weather alerting is important to siren system operators and CommanderOne LE brings Automatic Weather Based Activation to your existing One-Way systems. You can create alert areas around your sirens and set CommanderOne to activate your sirens automatically or with user prompted alerts.



**User Experience** – The Intuitive Interface is simple to use, always up-to-date, and connects to your on-premise SS2000+ Series C hardware activation point

**Desktop Freedom** – Access your system from any computer connected to the internet

**Mobile** – A user-friendly app for iOS and Android makes activation possible from anywhere

**Security** – Security is our top priority, CommanderOne LE utilizes a multi-layered authentication mechanism, including One Time Passwords, Token-Based Security and industry standard SSL

**Weather Activation** – CommanderOne LE systems will have access to activate sirens based on weather events

**Auto-Sync Hotkeys** – Hotkey activation settings are automatically synchronized with your local hardware SS2000+ Series C activation point

**Messaging** – Keep in contact with employees and first responders via email, SMS, and voice. Create on the fly messages or templates to streamline your workflow (optional add-on)

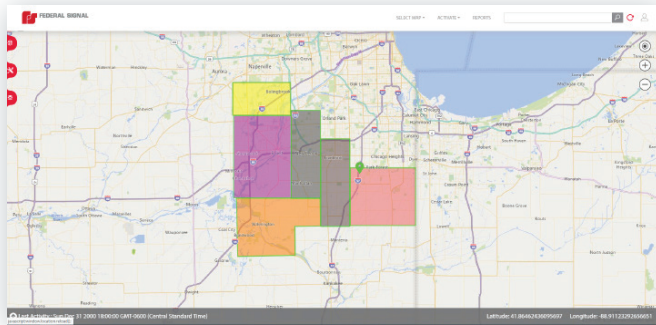
**Scalability** – CommanderOne LE is scalable from a few devices to hundreds of devices. It leverages a global network of data centers to maintain availability while securing your data

# CommanderOne® LE Cloud-Based Control for Your Warning Systems

## Desktop and Mobile

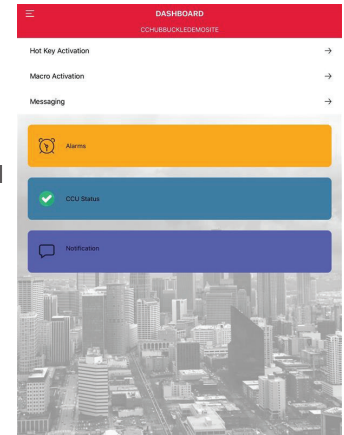
### Desktop

HotKeys are automatically pushed to the web by the SS2000+ Series C, so you can easily activate from a web browser interface. The HotKeys can be color coded on the web for ease of use.



### Mobile

iOS and Android apps let you control and monitor your system from virtually anywhere. It shows all HotKeys by a single click.

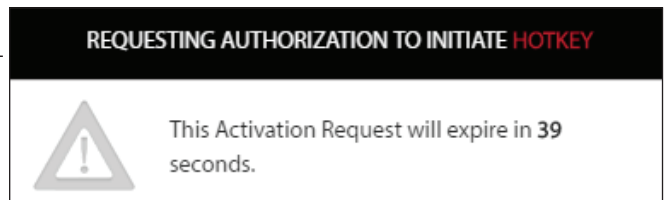


CONTROL

## Security

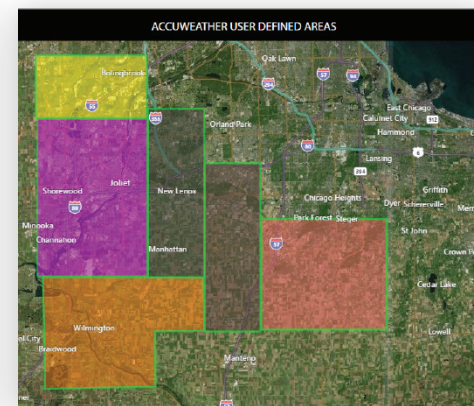
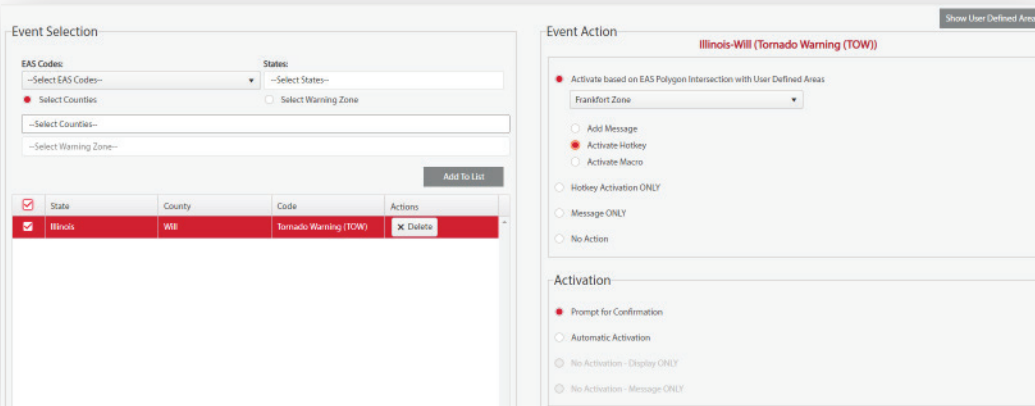
CommanderOne LE is secure by design. We use One Time Passwords, Token-Based Security and industry standard SSL to secure your communications.

Our new Multi-User Authentication takes security to the next level by allowing you to configure Hotkeys, Macros or Functions with an authorization level, which require varying levels of authorization: from simple passwords to app-based authentication. This means that you can set-up CommanderOne so that no one activates a function without another person verifying that activation, like two people needing their keys turned at the same time to open a locked door.



## Weather

CommanderOne LE Accuweather® brings automatic and prompted activation based on weather events. Using a simple interface, you choose them from events, such as a 911 telephone outage to a Winter Weather Advisory and the actions associated with them. From the Accuweather interface, you can activate sirens based on National Weather Service events and send messages with optional messaging. \*Sold separately\*



## CommanderOne® Cloud-Based Control for Your Warning Systems

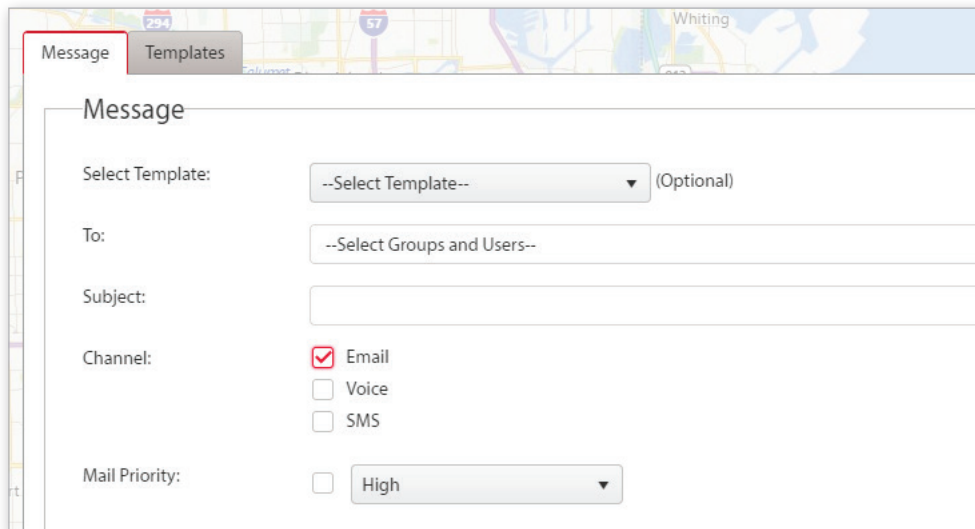
### Messaging

CommanderOne Messaging is an optional addition to the CommanderOne LE Cloud-Based Control system. Messaging adds the ability to quickly and easily contact your employees using our CommanderOne LE activation systems, either via the web or mobile app, on your smartphone.

Messaging allows users to create templates, ad-hoc messages and even dynamically add phone numbers or emails at the time of message creation. Utilizing CommanderOne macros, you can activate a siren Hotkey and at the same time, a messaging template. Templates allow for operators to create scenarios ahead of time, adding all users and information in a ready-to-go, one-button activation.

Messaging add-on is designed around you and your first responders, by keeping it simple and easy for you to message your crew while activating the sirens. With simple, easy to understand plans, administrators can add messaging to their existing CommanderOne LE systems or simply purchase a new CommanderOne LE plan with Messaging.

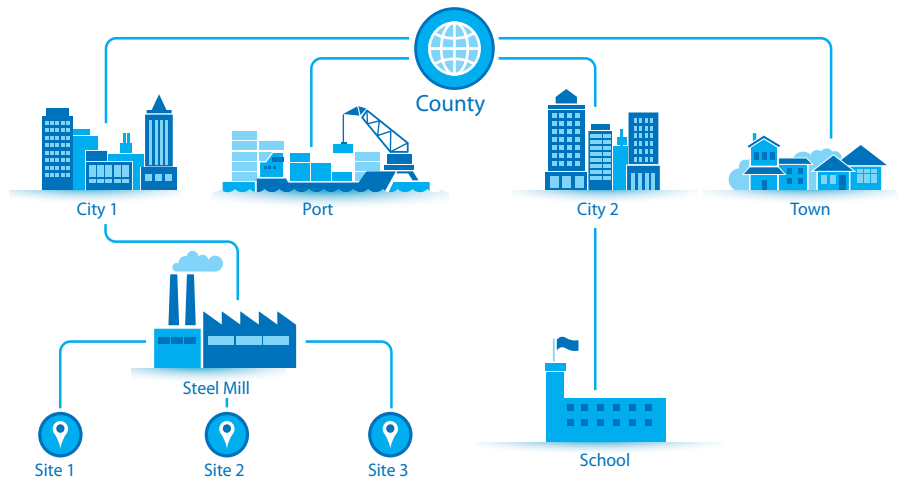
Messaging builds upon the strengths of the CommanderOne LE platform and can allow administrators to send out operational alerts and automated messages the moment NOAA issues alerts.



The screenshot shows a web interface for creating a message. At the top, there are tabs for 'Message' and 'Templates'. Below the tabs is a map showing a location near 'Whiting'. The main form is titled 'Message' and contains the following fields:

- Select Template:** A dropdown menu with the text '--Select Template--' and '(Optional)' to its right.
- To:** A dropdown menu with the text '--Select Groups and Users--'.
- Subject:** A text input field.
- Channel:** A section with three radio buttons:  Email,  Voice, and  SMS.
- Mail Priority:** A dropdown menu with the text 'High' and a downward arrow.

### Scalable Centralized Command and Control



CommanderOne is designed for a centralized command and control by managing disparate systems. Whether you have one site or multiple sites, you need a single dashboard to monitor and manage your network.

# CommanderOne® LE Cloud-Based Control for Your Warning Systems

## CommanderOne 1 way

Model	Description	Full Users w Phone App	Basic Weather
<b>Commander1-LE</b>	CommanderOne LE annual Sub	5	Yes

\*Includes Remote Implementation Support. For on-site support and training, contact your Federal Signal representative for a quote.

## CommanderOne 1 way with messaging

Model	Description	Full Users with Phone App	Messages only Users	Messages per month
<b>Commander1-LEM</b>	Standard messaging 1 way annual	5	200	500

\*Includes Remote Implementation Support. For on-site support and training, contact your Federal Signal representative for a quote.

*CommanderOne is a registered trademark of Federal Signal Corporation.  
Accuweather is a registered trademark of AccuWeather, Inc.*