

# XStream®

## Interior Mount Warning Light

### FEATURES

- Versatile, low-profile interior mount warning light
- Amber, Blue, Green, Red, and White
- Single-, dual-, or tri-color capability
- Single- or dual-head models
- (25) flash patterns and (10) color modes
- 12 Vdc
- Versatile mounting hardware included for dash/deck, headliner, and window mount applications
- Five-year warranty

### APPROVALS

- SAE J845 Class 1
- SAE J595 Class 1
- CCR Title 13

### FS TECHNOLOGIES



### Built-in Versatility

XStream® is an interior mount LED warning light that can be installed almost anywhere inside a police car, fire commander and volunteer fire vehicle, or work truck. XStream is available in single- or dual-head configurations with wire leads that allow for synchronization. Ideal for dash/deck, headliner, and window mount applications, each model includes a light head, (2) suction cups, bail and pivot brackets, mounting hardware and three different length snap-on flash guards, making installation quick and versatile.

Every model is built with Federal Signal's Solaris® LED reflector for superior optical performance. In addition, SpectraLux® multicolor LED technology provides the ability for a LED light head to change color and operate as a single, dual, or tri-color light head through user-selected color modes.

### Easy Push-Button Flash Pattern and Color Mode Selection

XStream warning lights come equipped with (25) flash patterns and (10) color modes. Flash patterns and color modes can be changed simply with two recessed buttons included on each model. Wired units use an advanced five-wire technology that coordinates flash patterns between up to eight lights at once.



**COLOR MODE**

COLOR MODE	SINGLE-HEAD	DUAL-HEAD 1	DUAL-HEAD 2	DESCRIPTION
1	Color 1, 2, 3	Color 1, 2, 3	Color 1, 2, 3	Light heads flash COLOR1, COLOR2, & COLOR3
2	Color 1	Color 1	Color 1	Light heads flash COLOR1
3	Color 2	Color 2	Color 2	Light heads flash COLOR2
4	Color 3	Color 3	Color 3	Light heads flash COLOR3
5	Color 1, 2	Color 1, 2	Color 1, 2	Light heads flash COLOR1 & COLOR2***
6	Color 1, 3	Color 1, 3	Color 1, 3	Light heads flash COLOR1 & COLOR3***
7	Color 2, 3	Color 2, 3	Color 2, 3	Light heads flash COLOR2 & COLOR3***
8	Color 1 (duplicates 2)	Color 1	Color 2	Light head 1 flashes COLOR1, Light head 2 flashes COLOR2***
9	Color 1 (duplicates 2)	Color 1	Color 3	Light head 1 flashes COLOR1, Light head 2 flashes COLOR3***
10	Color 2 (duplicates 3)	Color 2	Color 3	Light head 1 flashes COLOR2, Light head 2 flashes COLOR3***



Each model includes light head, two suction cups, bail and pivot brackets, mounting hardware and three different length snap-on flash guards.

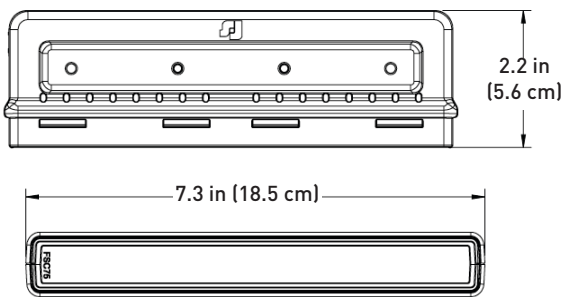
**SPECIFICATIONS**

	SINGLE-HEAD	DUAL-HEAD
OPERATING VOLTAGE	12 Vdc	
CURRENT DRAW	0.8 A (Steady White)	1.5 A (Steady White)
OPERATING TEMP.	-40° to +176° F (-40° to +80° C)	
<b>PHYSICAL SPECIFICATIONS LIGHT HEAD</b>		
LENGTH	3.9 in (9.9 cm)	7.3 in (18.5 cm)
WIDTH	2.2 in (5.6 cm)	
HEIGHT	1.0 in (2.5 cm)	
<b>SHIP WEIGHT</b>		
	0.6 lb (0.3 kg)	1.0 lb (0.5 kg)

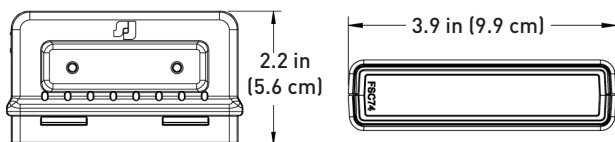
**FLASH PATTERNS**

PATTERN	NAME
1	Triple 92.3
2	Triple 90
3	Single 122
4	Single 75*
5	Single 90*
6	Single 113*
7	Cruise w/ Flicker
8	Random Time
9	Random Common*
10	Steady
11	Single 75*
12	Single 120*
13	Double 80*
14	Double 120*
15	Triple 80*
16	Triple 120*
17	Quad 60*
18	Quad 75*
19	Quad 95*
20	FedPulse Quad 75*
21	Quint 75*
22	7x
23	Single-Quad*
24	Decelerating
25	Accelerating

**Dual-Head Model**

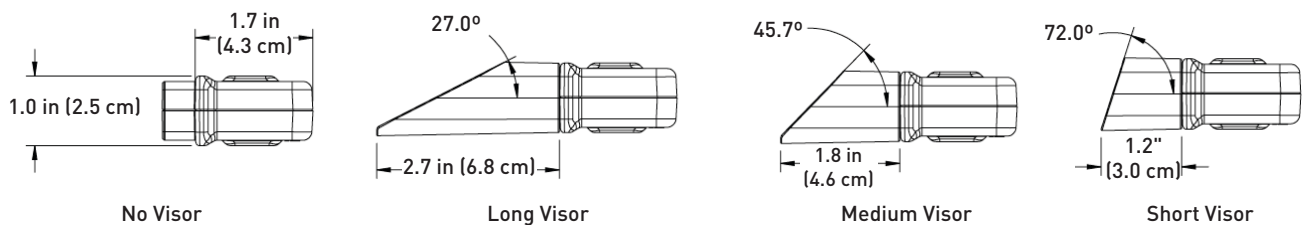


**Single-Head Model**



\* Conforms to CCR Title 13

**Visor Lengths Included with Each Model**



## HOW TO ORDER

LED Color      Lens Color  
A B G R      W      C

### SINGLE-HEAD MODELS WITH WIRE LEADS

XSM1-BRW-US	Blue/Red/White
XSM1-WAG-US	White/Amber/Green
XSM1-BRA-US	Blue/Red/Amber
XSM1-BWA-US	Blue/White/Amber
XSM1-RWA-US	Red/White/Amber

### DUAL-HEAD MODELS WITH WIRE LEADS

XSM2-BRW-US	Blue/Red/White - Blue/Red/White
XSM2-WAG-US	White/Amber/Green - White/Amber/Green
XSM2-BRA-US	Blue/Red/Amber - Blue/Red/Amber
XSM2-BWA-US	Blue/White/Amber - Blue/White/Amber
XSM2-RWA-US	Red/White/Amber - Red/White/Amber

### ACCESSORIES

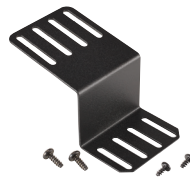
<b>XSMBKT01</b>	Visor mount kit for use with single- or dual-head models
<b>XSMBKT02</b>	Adjustable, swivel mount for single- or dual-head models
<b>XSMBKT03</b>	Headliner mount bracket for single- or dual-head models
<b>XSMBKT07</b>	Visor mount kit for use with (1) single- or dual-head XStream and (2) cameras (forward and rear facing), Dodge Charger, 2011-2024
<b>XSMBKT10</b>	Visor mount kit for use with (1) single- or dual-head XStream and (2) cameras (forward and rear facing), Ford F-150, 2015-2024, Ford F-250/350/450/550 Super Duty, 2017-2024, Ford Expedition 2018-2024, Ford Lightning, 2022-2024
<b>XSMBKT11</b>	Visor mount kit for use with (1) single- or dual-head XStream and (2) cameras (forward and rear facing), Ford Police Interceptor Utility, 2020-2025
<b>XSMBKT12</b>	Visor mount kit for use with (1) single- or dual-head XStream and (2) cameras (forward and rear facing), Dodge Durango, 2011-2024
<b>XSMBKT13</b>	Rear window mount kit for (2) single- or dual-head XStream models, Ford Ranger, 2019-2020
<b>XSMBKT14</b>	Visor mount kit for use with (1) single- or dual- head XStream, with mounting holes for front and rear facing cameras, Chevrolet Tahoe, 2021-2025
<b>XSMBKT15</b>	Driver and passenger visor mount kit for use with (1) single- or dual-color head XStream, with mounting holes for front and rear facing cameras, Ford Mustang, 2024
<b>XSMBKT16</b>	Driver and passenger visor mount kit for use with (1) single- or dual-head XStream, with mounting holes for front and rear facing cameras, Dodge Ram 1500 SSV, 2024
<b>Z205003</b>	Rubber gasket



XSMBKT01



XSMBKT02



XSMBKT03



XSMBKT10



XSMBKT14



XStream, SpectraLux, and Solaris are registered trademark of Federal Signal Corporation. Ford and Dodge are trademarks of their respective owners.