

CHEVROLET

TAHOE

2021-2023





FRONT

1 SpectraLux® ILS Low-Profile

The slim-line, multicolor interior lighting system blends into the headliner of the vehicle, making it ideal for undercover applications.

4 CN SignalMaster™

Multicolor warning light with directional and area lighting capability available in 4- and 8-head models.

2 3 MicroPulse® Ultra

Ultra-low-profile design offers a range of mounting options to fit various applications and is available in single, dual, and tri-color models.

5 DynaMax®/ES100C Speaker

Built with a Neodymium driver to increase performance and reliability.



SpectraLux® ILS Low-Profile provides a tight fit to the front headliner of the vehicle and offers the same advanced warning, takedown, and flood lighting capabilities as a full-size light bar.



MicroPulse® Ultra light heads can be programmed to operate as a single unit or in synchronization with multiple MicroPulse light heads.



DynaMax®/ES100C Speaker has a compact shape designed to be installed onto the push bumper or behind the grille.



MicroPulse® Ultra available in three, different sizes with either (3), (6), (12), (18), (24), or (36) LEDs.



CN SignalMaster™ models feature SpectraLux technology, which allows a single LED light source to change color while in operation. Front models feature White LEDs that can be used as takedowns or act as an impressive flood light.



SIDE

1 XStream®

Single or dual-head, tri-color interior light with cigarette plug or wire leads.

2 MicroPulse® Wide Angle

Curved design offers 180° light spread.

3 4 416300 Series

Single or dual-color, flush mount light head.

5 6 MicroPulse® Ultra

Ultra-low-profile design available in single, dual, or tri-color models.



MicroPulse® Ultra's lens is made of UV resistant polycarbonate to protect against harsh conditions. Models include a fully encapsulated waterproof housing, which provides a barrier against moisture and condensation.



MicroPulse® Wide Angle utilizes (6), (9), or (12) LEDs and is ideal for mounting on push bumpers, rub rails, side mirrors, and spoilers.



XStream® models include a light head, suction cups, mounting brackets and three different length snap-on flash guards, making installation quick and versatile.



416300 Series is ideal for mounting in a variety of applications such as tailgates, running boards, push bumpers, grille, side mirrors, and inside of trunk lids and door panels.





REAR

1 2 MicroPulse® Ultra

Ultra-low-profile design offers a range of mounting options to fit various applications and is available in single, dual, or tri-color models.

3 SpectraLux® ILS Low-Profile Rear Hatch

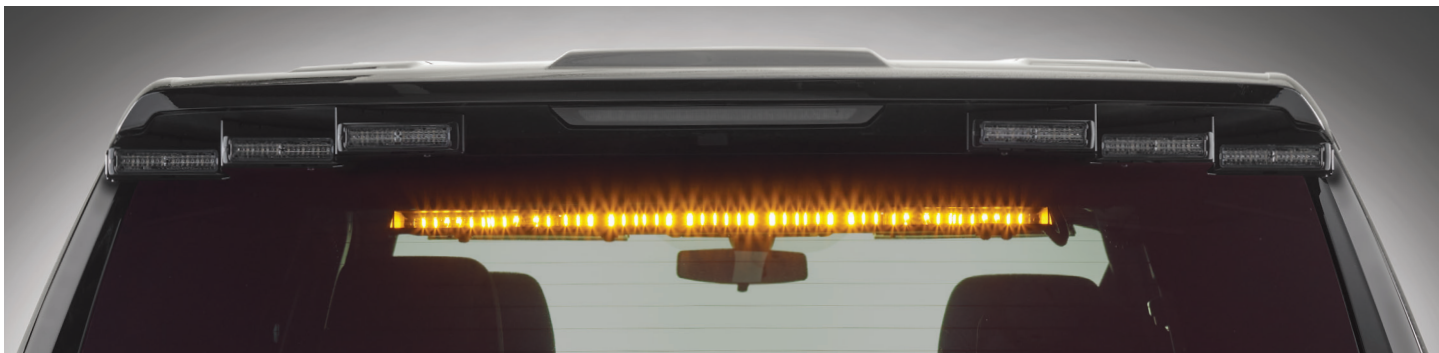
The slim line, multicolor interior lighting systems blends into the headliner of the vehicle, making it ideal for undercover applications.

4 5 416900Z/416910Z Corner LED

Single-head in-line Corner LED available in single and dual-color models.

6 416300 Series

Single and dual-color, flush mount light head.



SpectraLux® ILS Low-Profile models feature SpectraLux technology, which allows a single LED light source to change color while in operation. Front models feature White LEDs that can act as an impressive flood light, and rear models feature Amber LEDs that can be used as an “Amber-override” for directional lighting.



416900Z/416910Z Corner LEDs can be synchronized to flash simultaneously or alternatively and are suitable for external and internal use.



416300 Series is ideal for mounting in a variety of applications such as tailgates, running boards, push bumpers, grille, side mirrors, and inside trunk lids and door panels.



416300 Series is ideal for mounting in a variety of applications such as tailgates, running boards, push bumpers, grille, side mirrors, and inside trunk lids and door panels.



MicroPulse® Ultra light heads can be programmed to operate as a single unit or in synchronization. Models are available in three different sizes with (3), (6), (12), (18), (24), or (36) LEDs.



PBX SERIES

1 Push Bumper

Designed with maximum safety in mind, and it offers customization for your specific needs while providing the best strength, durability, and protection.

2 Top Channel

Allows for customization and provides extra lighting to the front of the vehicle.

3 PIT Bar

Two wide rubber strips match the push bumper and provide vehicle protection.

4 Wing Wrap

Vehicle specific contour design provides the best overall look and fit while offering additional protection to the front end and headlight.



No drilling is required, making installation quick and easy. The push bumper features pre-drilled holes to bolt optional PIT Bar and Wing Wrap.

Top Channels are available in solid, two-light, and four-light options.

PUSH BUMPER

PBX08	Push Bumper
-------	-------------

TOP CHANNELS (MUST ORDER 1 WITH EACH PUSH BUMPER)

PBX-TCP-2	Plain top-channel for use with PBX08
PBX-TC2L-4	Top-channel for mounting (2) MPS6U lights on PBX08 bumper
PBX-TC4L-4	Top-channel for mounting (4) MPS6U lights on PBX08 bumper

OPTIONAL PIT BAR (ORDER 1 WITH EACH PUSH BUMPER IF DESIRED)

PBX-PIT08	PIT bars for use with PBX08
-----------	-----------------------------

OPTIONAL WING WRAP (ORDER 1 WITH EACH PUSH BUMPER IF DESIRED)

PBXW-TAH21	Wing Wraps for use with PBX08
------------	-------------------------------

ACCESSORIES

PBX-WC08	Wire Covers for use with PBX08
MPSU-PB45H	Pair of 45-degree slanted push bumper mounts, horizontal light orientation, each bracket holds (1) MPS3U/MPS6U/MPS12U light
MPSU-PB45V	Pair of 45-degree slanted push bumper mounts, vertical light orientation, each bracket holds (1) MPS3U/MPS6U/MPS12U light

PATHFINDER, RUMBLER SPEAKER & ACCESSORIES



PF200

Pathfinder® Siren and Light Controller is packed with features that puts you in control of your vehicle:

- 100/200 W siren/light controller
- Dual-tone capability when used with two speakers
- Integrated Rumbler® traffic clearing capability
- On-Board Diagnostics (OBD) integration
- Programmable timer feature
- Library of selectable siren tones
- Standard voice messages are available in English, Spanish, and French Canadian to broadcast alerts. Custom voice messages available for an additional fee.
- (7) Programmable inputs and (12) programmable solid-state outputs
- (2) Convergence Network ports
- Convergence Network Configuration software allows for easy customization
- Meets or exceeds SAE, California Title 13, and NFPA requirements



PF200R



PF200H



PF200S17B



PF200S6



PF200S4

PF200	Siren/Light Controller with Self-contained controls and microphone
PF200R	Siren/Light Controller with Remote surface mount controller and microphone
PF200H	Siren/Light controller with Handheld controller and microphone
PF200S17B	Siren/Light Controller with 17 button surface mount controller and microphone
PF200S4	Siren/Light Controller with 4 button surface mount controller and microphone
PF200S6	Siren/Light Controller with 6 button surface mount controller and microphone



RBKIT2

Rumbler®

Rumbler traffic clearing system provides low-frequency warning that penetrates solid materials allowing vehicle operators and nearby pedestrians to FEEL the sound waves.

RBKIT2

Pair of Rumbler woofer for use with Pathfinder siren



ES100C

DynaMax®/ES100C Speaker

- Slim and lightweight, compact 100 W speaker
- Neodymium driver increases performance and reliability
- High-strength composite housing is chemical resistant and maintains rigidity at high temperatures

ES100C

Speaker, 100 W, high-output, Class A



PFSYNC1

On Scene Sync Module

- Synchronize warning lights and voice messages between multiple "like programmed" vehicles
- Utilizes GPS signal to maintain timing
- Sync unlimited number of vehicles within any distance
- Includes an ambient light sensor to auto adjust warning lights

PFSYNC1

On Scene Sync, GPS/Ambient



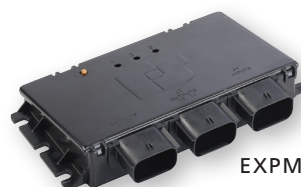
EXPMOD-2

Rear Expansion Module

- Provides the ability to flash and blackout OEM brake, tail, turn, and reverse lighting and blackout third brake light
- (18) Solid state fully programmable relay outputs, ((16) 7.5 Amp High and (2) 20 Amp High)
- Vehicle-specific rear taillight connection wire harnesses sold separately

EXPMOD-2

Rear expansion module, (18) solid-state programmable relay inputs, (16) 7.5 A flashing outputs and (2) 20 A control outputs



EXPMOD24

24-Channel Expansion Module

- 24-Channel solid-state relay outputs, 2.5 A Max (active high), 30 A Maximum total
- Potted to help protect from unfavorable weather making it ideal for under the hood mounting
- All weather-proof connections

EXPMOD24

24-channel expansion module

EXCLUSIVE TECHNOLOGIES



SOLARIS® LED reflector technology is engineered to increase off-axis warning and maximize the LED light source



SLR (SOLARIS® LED ROTATOR) rotators provide rotating, oscillating, flashing and flood light functionality



SPECTRALUX® multicolor LED technology provides the ability for a LED light head to change color while in operation



FS CONVERGENCE NETWORK product utilize a serial communication cable to provide “plug-n-play” installation of Federal Signal’s light bars and other warning devices to Federal Signal’s compatible siren amplifiers and controllers, such as our Pathfinder® product family.



ROC (RELIABLE ONBOARD CIRCUITRY) technology eliminates approximately 85% of the connection failure points found in a typical light bar



HOTFOOT® lighted mounting feet provide additional light through powerful Solaris reflectors that are built into the mounting system of the light bar



FSLINK® is a built-in software technology that allows our products to synchronize their flash patterns for a unified vehicle warning solution



FSJOIN™ is a programming compatibility feature of Federal Signal’s light bars and exterior/interior warning lights that works in conjunction with Pathfinder light/siren controllers. This feature enables the synchronization of functions, operation, and flash patterns of individual light heads from multiple warning devices in order to create a unified vehicle solution. FSJoin further provides the capability to synchronize warning lights on multiple “like-programmed” vehicles in order to unify the optical warning of a multi-vehicle response.



V-SHAPE LIGHT BAR is mechanically designed to have a non-linear shape, V-Shape, providing an advantage in terms of off-axis performance compared to light bars with a traditional linear shape. All other variables being equal, the physical V-Shape enables the light bar to deliver more optical warning to critical 45- and 90-degree intersection angles than a linear light bar.



RUMBLER® is a low frequency siren that works simultaneously with primary siren tone that penetrates solid materials allowing vehicle operators and nearby pedestrians to feel the sound waves. The Rumbler is particularly effective for Police and Fire/EMS applications when used in dense urban environments with heavy vehicle and pedestrian traffic.



Q SOUND is a registered trademark of Federal Signal Corporation, and it provides a distinctive, recognizable long-distance warning tone.



51-inch **Valor**® with low-profile hook mount

LIGHT BAR

Valor	
Recommended lengths for Chevrolet Tahoe (inches)	44, 51
Hook Mounting Options	Standard and Low-Profile
Non-linear / V-Shape	•
Low-profile	•
Dome colors	Clear
LED colors	Amber, Blue, Green, Red, & White
Solaris® LED Reflectors	•
ROC (Reliable Onboard Circuitry™)	•
FS Convergence Network	•
SpectraLux® Multicolor LED	•
Dual-color capability	•
Tri-color capability	•



BRACKETS AND VEHICLE-SPECIFIC ITEMS

LIGHT BAR MOUNTING

HKB-TAH21-44-HP	Hook required with hook-on mount, 44-, 45-, 46-, and 48-inch light bars
HKB-TAH21-HP	Hook required with hook-on mount, 51- and 53-inch light bars
Z865300732	2-inch riser mount kit for Allegiant, Integrity, Legend or LPX, used when mounting external Opticom
Z865300717	Spacer kit for use when mounting external Opticom on Legend, Allegiant, or Integrity light bars

PATHFINDER OBDII INTEGRATION

OBDCABLE8-GMCAN	8-ft CAN interface cable and module kit
OBDCABLE20-GMCAN	20-ft CAN interface cable and module kit

AUDIBLE WARNING BRACKETS

ESB-U	Universal bail bracket, ES100C
ESB2-TAH21ND	No drill, bracket only- (1) or (2) ES100C, compatible with SSV, PPV, and retail models
ESBL2-TAH21ND	No drill, bracket only- (1) or (2) ES100C and (2) MPS series lights, compatible with SSV, PPV, and retail models
RB-TAH21	Kit, pair of Rumbler mount brackets with hardware

GRILL LIGHT BRACKETS

CNSM-TAH21	4-Head CNSM grill mounting bracket kit
MPSM6-GRL2	Bracket kit, 2 MPS series lights behind grill
MPSM6-GRL3	Bracket kit, 2 MPS6U series lights on each side of bowtie

HOOD MOUNT LIGHTS

MPS650 or MPS652	MicroPulse 6, (6) LEDs, Single or Dual-Color
------------------	--

LICENSE PLATE BRACKETS	
IPX-LPV1	Vertical license plate mount, (2) MPS3U lights
IPX-LPV2	Vertical license plate mount, (2) MPS3U, MPS6U, MPS12U lights
MPSM-LPH1	Horizontal license plate mount, (2) MPS3U, MPS6U lights
MPSM6-LPH1	Horizontal license plate mount, (2) MPS6U, MPS12U, MPSW9 lights
MPSM6-LPV1	Vertical license plate mount, (4) MPS6U lights, (2) each side of license plate
INTERIOR FRONT HEADLINER	
SIFMJS	SpectraLux ILS Low-Profile, 8-head Split front, Center-focused
SIFZJS	SpectraLux ILS Low-Profile, 8-head Split front, Off-axis
XSMBKT01	Universal headliner mount bracket for single- or dual-head models XStream series
XSMBKT03	Universal visor slip-on mount kit for single- or dual-head models XStream series
XSMBKT14	Driver and passenger visor mount kit for use with (1) single- or dual-head XStream, with mounting holes for front and rear facing cameras
SIDE MIRROR BRACKET	
MPSMW9-TAH21MIR	Pair of side under mirror brackets, each bracket holds (1) MPSW9 light
REAR SIDE WINDOW	
XStream	XSM1/XSM2 models will fit with included mounting brackets
MicroPulse Ultra	MPS3U, MPS6U, and MPS12U lights will fit in this location using MPSM3-, MPSM6-, or MPSM12- "LB" or "DL" bracket
INTERIOR REAR HEADLINER	
SIFMJH	SpectraLux® ILS Low-Profile, 8-head Rear Hatch, Center-focused style
Xstream	XSM1/XSM2 models will fit with included mounting brackets
SPOILER BRACKETS	
MPSM6-TA21RS	6-Head MPS6U spoiler bracket kit
MPSM6-TA21RS1	2-Head MPS6U spoiler bracket kit
BOTTOM OF REAR HATCH	
416302	Grommet kit, mounts (2) 416300 series in bottom of lift gate panel for auxiliary rear warning when lift gate is open
TAILLIGHT OPTIONS	
FHL-TAIL	Flasher, Taillight, universal applications, 18-inch wire leads
EXPMOD-2	18 Channel Expansion Module with taillight black-out capability
EXPHARN05	Rear taillight connection wire harness for use with EXPMOD-2
416900Z/416910Z Corner LEDs	416900Z/416910Z Corner LEDs can be mounted in the taillight assembly
PUSH BUMPER AND ACCESSORIES	
PBX08	Push bumper
PBX-TCP-2	Plain top-channel for use with PBX08
PBX-TC2L-4	Top-channel for mounting (2) MPS6U lights on PBX08 bumpers
PBX-TC4L-4	Top-channel for mounting (4) MPS6U lights on PBX08 bumpers
PBX-PIT08	PIT bars for use with PBX08
PBXW-TAH21	Wing Wraps for use with PBX08
MPSU-PB45H	Pair of 45-degree slanted push bumper mounts, horizontal light orientation, each bracket holds (1) MPS3U/MPS6U/MPS12U light
MPSU-PB45V	Pair of 45-degree slanted push bumper mounts, vertical light orientation, each bracket holds (1) MPS3U/MPS6U/MPS12U light



800-264-3578 | www.fedsig.com

Chevrolet Tahoe is a registration Mark of General Motors.

© 2021-2023 Federal Signal Corporation. All rights reserved worldwide. M406 | 32023