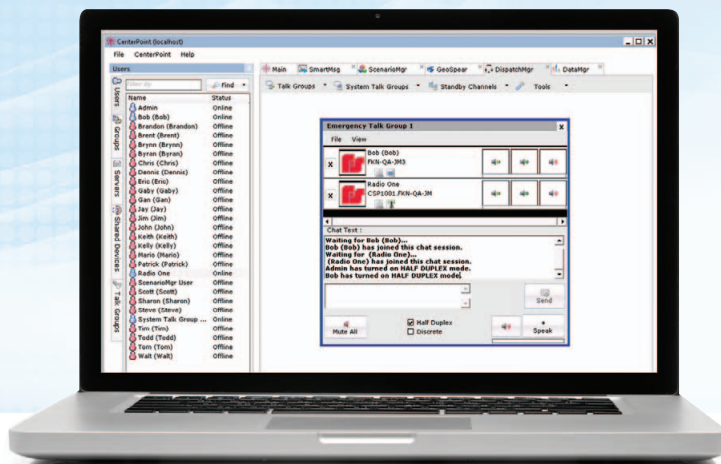


SmartMsg Radio Interoperability

The SmartMsg RadioLink™ software supports real-time, two-way radio interoperability with the SmartMsg alerting and notification system. Radiolink allows the ability to configure radios interfaced to the RIU or RIU+ (Radio Interoperability Unit). Serving as the liaison with the RIU or RIU+, RadioLink bridges communications between radio networks and other PTT devices, as well as PCs, phones and other modes of communication capable of accessing the SmartMsg network.



SmartMsg-Radiolink

SmartMsg is a solution that provides communications interoperability among multiple agencies and communication devices. Disparate, non-interoperable communication hardware has caused first responders and other public safety personnel significant difficulty in communicating with each other. In addition to the need for interoperable live communications, public safety institutions must have the ability to broadcast time-sensitive alerts to both target groups and mass citizenry. Interoperability and alerting concerns require a more immediate solution in order for communities to have the best possible chance of minimizing a catastrophe.

SmartMsg with Radiolink blends communications interoperability, alert notification, secure urgent messaging, and interactive data sharing into a seamless, stationary and/or portable, software package. This approach to interoperable communications produces a complete solution, which provides critical communications support for emergency preparedness and response, command and control, incident response, and continuity of operations across jurisdictions, agencies and first responders. Each of these capabilities can be used independently, or they can be used in conjunction to deliver a comprehensive, highly flexible, cost effective and easily expandable communications system.



FEDERAL SIGNAL
Safety and Security Systems

Protecting people and our planet

RIU Radio Interoperability Unit

- **Communications interoperability for all LMR radio systems (800 MHz, UHF/VHF, digital band and shortwave radios)**
- **VoIP-based convergence of multiple voice-capable devices, including radios, phones (cell, SAT, IP and PBX) and computers**
- **Intelligent “plug and play” communications interoperability with smart recognition of agencies and radio types accessing the network**
- **Real-time audio buffering to accommodate individual radio-system latency**
- **All-in-one package for mobile desktop or rack mounting**
- **Requires PC with USB interface**



The SmartMsg RIU features embedded VoIP architecture to support simultaneous broadcast of text and voice alert notifications to two-way VHF and UHF radios, pagers, PA systems and other PTT devices, as well as cell phones, landlines, PCs and wireless PDAs.

The RIU supports radios from different manufacturers across multiple bands and frequencies (including shortwave and P25 digital), and pre-defined talk groups. The SmartMsg RIU is a compact hardware appliance used with a standard PC running the SmartMsg Radiolink application.

The SmartMsg Radiolink application automatically recognizes the presence of the RIUs and any connected radio. All devices are connected to the RIU via Federal Signal's patented SmartCables, which identify the cable's chip ID, the agency owning the cable and radio model settings. The cables automatically configure radio and agency-specific communications settings to ensure network security, and the VoIP architecture effectively enables each radio as a secure virtual repeater.

RIU Specifications

Features

- No heat displacement
- No venting requirements
- Powered via PC USB port
- SmartCables auto ID an Agency's Radio System
- Talk Privileges and radio system settings
- SmartCables for deployment ease
- Unlimited RIUs supported at incident site or across dispersed network
- Cellular, satellite and private data wireless for bridged communications

Physical Specifications

Height	1-3/8"
Width	4"
Depth	6-5/8"
Weight	12.6 oz

Order Information

CS-RIU	Radio Interface Unit (requires cables, ordered separately)
--------	---

Accessories

Product Number	Description
Mandatory connector cable for the RIU and RIU+ (one cable per radio interface needed)	
8647000A	Universal RIU Adaptor Interface requires one per cable below, up to 4 per RIU device
Available radio interface cable options (one per radio required)	
864700073A	Motorola XTN/CP200/BPR40
864700074A	Motorola HT 1000, XTS 5000
864700075A	Kenwood (TK2170,TK2302V, NX-240V,NX-340U)
864700076A	BENDIX KING
864700077A	Motorola HT 1250 & Compatible
864700078A	Icom F11S
864700080A	Motorola CDM 750/1550/CM200/CM300 LS/PM400
864700081A	Motorola Turbo XPR6550, APX7000 & Compatible
864700082A	Motorola XPR 4550,ALL XPR Mobile
864700083A	Motorola MCS 2000 DB25 Rear Connector
864700084A	M/ACOM M7100
864700085A	M/ACOM M7300
864700086A	Kenwood TK-480,TK-5320
864700087A	MACOM P7100 SERIES, MC-1527 PRYME
864700103A	Kenwood TK5810
864700104A	Kenwood TK790
864700105A	Motorola Astro XTL 1500, 2500, 5000,APX7500
864700136A	Hirose Plate Assy w/ male female extension

RIU+ Radio Interoperability Unit

- Same as RIU, except for the following:
- All-in-one package for desktop or rack mounting
- Four-channel RIU is fully integrated with the CPU for ease of set-up
- Eliminates the need for a secondary PC or server device



The SmartMsg RIU+ combines the functionality of the base RIU with the added processing capacity of a PC in a compact package. The integrated CPU delivers the necessary performance to run the SmartMsg server and RadioLink software on a Microsoft Windows® 7 system. Connectivity is provided via Ethernet, which allows remote radio systems to be linked into the SmartMsg system. Direct communication for notification is provided with the ability to bridge or conference other devices for real-time communications.

The RIU+ features the same 4 port radio capability as the standard RIU but does not require a user-provided PC. The RIU+ can be either desk or 19" rack mounted.

RIU+ Specifications

Features	
SmartCables auto ID an Agency's radio system	
Unlimited RIU supported at incident site or across dispersed system	
Communications	
Max LAN Speed	10/100/1000Mbps
Front Panel Ports	
Front USB	2
Front Audio Ports	2 jacks
Operating System	
Windows® 7 Embedded	
Power Supply	
External 65W Power Adapter	
Power Draw 35 watt	
Physical Specifications	
Height	2.6"
Width	11.8"
Depth	9.5"
Weight	5.95 lbs.

Order Information

CS-RIUPLUS	Includes integrated PC and RIU with mouse, a keyboard and 19" rack mount assembly (requires cables, ordered separately)
------------	---



Accessories

X-MONFS-22	Monitor for set-up purposes
------------	-----------------------------

See RIU accessories for available radio interface cable options

Integrated communications systems made simple. Imagine how you could increase safety, minimize expense, and simplify maintenance with a single integrated solution.

