



► HighLighter® LED Pro | Mini-Light Bars

FEATURES

- Low-profile LED mini-light bar; only 2.7" tall
- 360-degree light distribution; no dark spots or shadows
- Solaris® LED reflector technology
- ROC (Reliable Onboard Circuitry™) technology
- Pattern selection using MagnetSelect™, key chain included
- Sync capability
- Two-channel high-side flasher synchronizes other light heads (up to 7.5 Amps per channel)
- Low-power, dim option
- Five-year warranty

APPROVALS

- SAE J845, Class 1
- CAC Title 13

Low-profile, LED mini-light bar provides 360-degree of light output

At only 2.7-inches high (permanent mount), the HighLighter® LED Pro mini-light bar features Federal Signal's patented Solaris® LED reflector technology to re-direct light for substantially improved off-axis warning. Solaris reflectors provide 360-degree of light output, while virtually eliminating dark spots.

Advanced circuitry keeps this lightbar on the road

HighLighter LED Pro units incorporate Federal Signal's ROC (Reliable Onboard Circuitry™) technology, which eliminates 85% of potential failure points. The end result: Dependable and continuous visual warning with fewer repairs and a lot more time on the job.

Packed with features to maximize performance

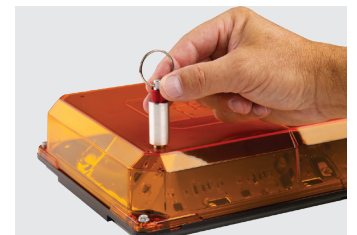
The HighLighter LED Pro is an ideal solution for municipal, DOT and utility vehicles. The built-in high-side 2-channel flasher allows for other light heads to run off of the HighLighter LED Pro (up to 7.5 Amps). Additionally, HighLighter LED Pro models can be synced together.

Ease of installation and flash pattern selection

The HighLighter's suction-cup and magnet mount model include a cigarette lighter plug and built-in ON-OFF switch that makes them simple to install and just as simple to operate. Incorporated into the top of the LED dome is Federal Signal's innovative MagnetSelect™ feature (patent pending) that enables users to quickly, easily select from more than 19 flash patterns using a simple magnet.



On/Off control switch on cigarette plug magnet mount models



MagnetSelect enables selection from 21 flash patterns using a simple magnet.



Specify model

Solid color, suction-cup mount, includes cigarette plug with on/off switch

454300HL Split model

Solid color, permanent mount

454301HL Split model

Solid color, magnet mount with cigarette plug included

454302HL Split model

Note: See Price Books for additional models

Accessories and Kits

SW2	Switch control
452340	Kit, magnetic mount, cigarette plug included
452341	Kit, suction-cup magnetic mount, cigarette plug included
452342	Kit, magnetic mount, no cigarette plug
454217	Kit, riser mount
454218	Kit, flat mount
454219	Kit, Roof Mount Bar (must be used when mounting a HighLighter on a roof mounting bar)
454220	Kit, switch, pattern select
210883SSG	Self-leveling bracket
210960-46	46", Roof Mounting Bar
210960-54	54", Roof Mounting Bar
210960-65	65", Roof Mounting Bar

Specifications

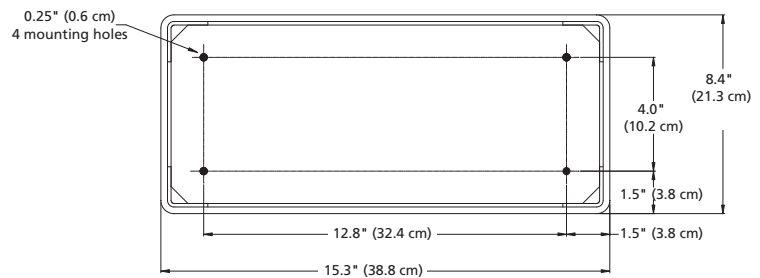
Amp Draw	Max: 5.7A (total amp draw depends on flash pattern used)
Flash Rate	Various
LED Count	42
LED Color Options	Clear
Lens Color Options	Amber, Blue, Clear, Green and Red

Physical Specifications

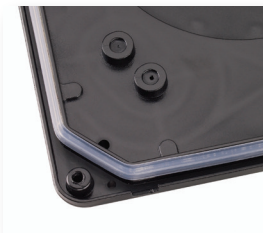
	Height	Length	Width
Permanent mount	2.7 in (6.6 cm)	15.3 in (38.8 cm)	8.4 in (21.3 cm)
Magnetic mount	3.0 in (7.6 cm)	15.3 in (38.8 cm)	8.4 in (21.3 cm)
Suction-cup mount	3.0 in (7.6 cm)	15.3 in (38.8 cm)	8.4 in (21.3 cm)

Ship Weight

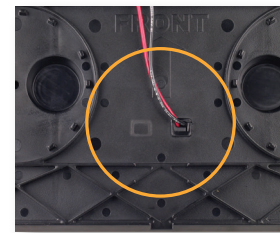
Permanent mount	3.4 lbs (1.5 kg)
Magnetic mount	4.5 lbs (2.0 kg)
Suction-cup mount	6.0 lbs (2.7 kg)



For ease of service while on the vehicle, the dome can be removed from the base by simply removing (4) screws and lifting the dome in from one of the notches in the base.



A wiper gasket blade improves the seal of the dome.



On the bottom of the base, are two knock-outs with a strain-relief for power and ground or for additional wiring.



HighLighter, Solaris, MagnetSelect, and Reliable Onboard Circuitry are trademarks of Federal Signal Corporation.

©2020 Federal Signal Corporation. M1503 | 22020