



DODGE CHASSIS SPEAKER



Speaker bracket shown installed on existing Dodge bumper frame.

Designed for the perfect fit

The specially designed Federal Signal DS100 model speaker has been created for use on ambulances built on Dodge 3500 chassis. This 100-watt speaker utilizes the durable Federal Signal neodymium speaker driver found in many of our popular speakers and combines it with brackets specifically designed for the Dodge chassis.

The speaker mounts directly into the fog light cut outs of the 2008 Dodge 3500 chassis. This enables for a simple installation without cutting into the bumper. The speaker size matches with the existing fog lamp hole and provides a clean look to the front of the vehicle.

> Features

- 100-watt speaker features the dependable Federal Signal neodymium speaker driver.
- Driver and passenger side models.
- Mounting brackets match speaker with existing fog lamp cut outs for clean installation.
- Suitable for use in GSA KKK-A1822F compliant systems.

> Approvals

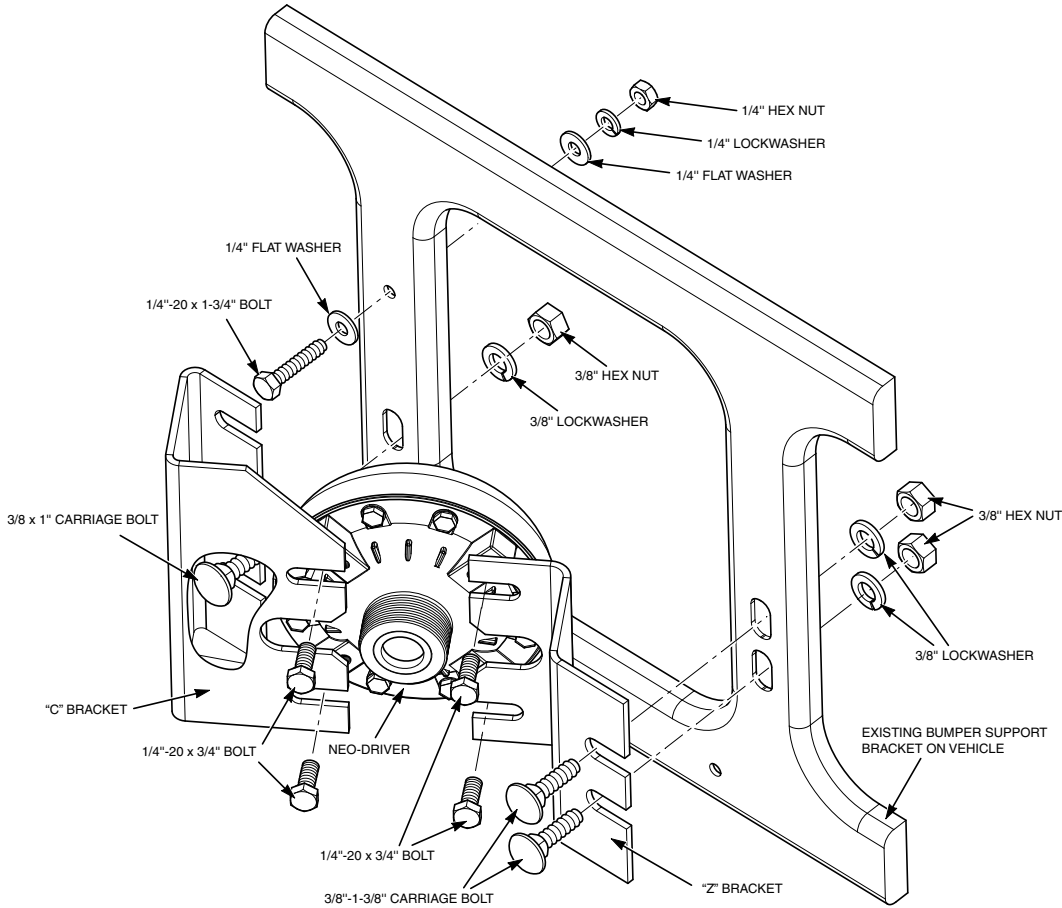
- SAE J1849
- CAC Title 13
- Class A
- GSA KKK-A1822F

> **How to Order**

DS100-P 100-watt speaker, passenger side,
Dodge Chassis

DS100-D 100-watt speaker, driver side
Dodge Chassis

Specifications	
Power	100W
Physical Specifications	
Height	5.8 in (14.7 cm)
Length	5.5 in (14 cm)
Depth	6.5 in (16.5 cm)
Ship Weight	
	4.0 lbs (1.2 kg)



290A5945