

**INSTALLATION INSTRUCTIONS  
FOR  
MODEL FVPK PERMANENT MOUNTING KIT  
ON  
VIEWPOINT™ LIGHT ASSEMBLY**

**SAFETY MESSAGE TO INSTALLERS**

People's lives depend on your safe installation of our products. It is important to read, understand and follow all instructions shipped with the products. In addition, listed below are some other important safety instructions and precautions you should follow:

- To properly install mounting kit, you must have a good understanding of emergency vehicle procedures and systems.
- When drilling into a vehicle structure, be sure that both sides of the surface are clear of anything that could be damaged.
- Refer to installation instructions packed with light assembly for proper electrical installation and precautions.
- You should frequently inspect the light system to ensure that it is operating properly and that it is securely attached to the vehicle.
- File these instructions in a safe place and refer to them when maintaining and/or re-installing the product.

Failure to follow all safety precautions and instructions may result in property damage, serious injury, or death to you or others.

**A. UNPACKING.**

After unpacking the mounting kit, carefully check all envelopes, shipping labels, and tags before removing or destroying them. Ensure that the parts listed in the KIT CONTENTS LIST are contained in the packing carton.

**B. KIT CONTENTS LIST.**

Qty.	Description	Part Number
8	Screw, 1/4" x 3/4", Type B, Thd. Forming	7011A158-12
16	Pad, Mounting, Rubber	8422A033
2	Bracket, Permanent, Left	8572280
2	Bracket, Permanent, Right	8572281
4	Nut, Hex, 3/8-16, S.S.	7059A063
4	Washer, 3/8, S.S.	7072A035
8	Lockwasher, Split, 3/8, S.S.	7074A046

**C. INSTALLATION OF MOUNTING BRACKET TO LIGHT.**

1. Carefully turn one of the ViewPoint halves upside down and place it on a surface which will not scratch the domes.

**NOTE**

Step C.2. requires the use of the 3/8-16 nuts and 3/8" flat washers saved during unpacking.

2. Assemble the appropriate pair of mounting brackets on the carriage bolts (factory installed) using nuts, flat washers, and lockwashers as shown in figure 1. Position the brackets adjacent to the inboard and outboard pods allowing access to the holes used to mount the light assembly on the vehicle roof. Secure the brackets in position.

3. Repeat steps C.1. and C.2. on the other ViewPoint half.

**D. INSTALLATION ON VEHICLE ROOF.**

1. See figure 2. Position one ViewPoint half on the vehicle roof at the desired location. The unit should be positioned with the pods aligned facing forward. In addition, ensure that the unit does not interfere with operation of other apparatus.

2. Using the mounting brackets as templates, scribe four drill position marks on the mounting surface.

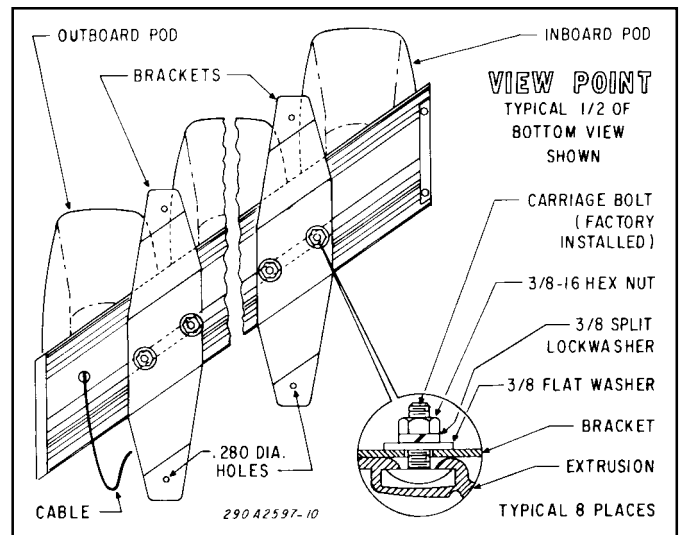


Figure 1.

3. See figure 2. Position the other ViewPoint half on the vehicle roof. Using the mounting brackets as templates, scribe four drill position marks on the mounting surface.

### CAUTION

Avoid damage to electrical wiring and other parts of vehicle. When drilling or cutting on ANY part of the vehicle, ensure that both sides of the surface are clear of parts that could be damaged.

Also, when drilling mounting holes, ensure that holes are drilled only through sheet metal and not through upholstery.

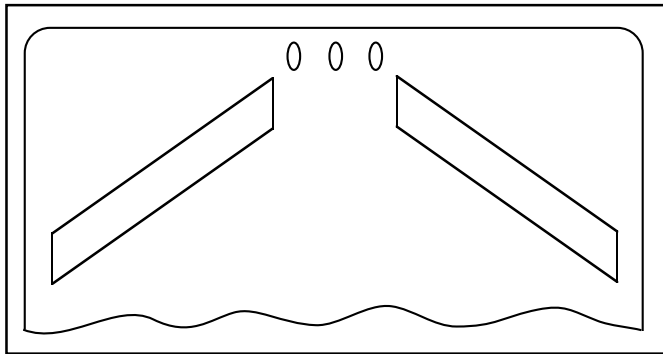


Figure 2.

4. Prior to drilling, move the units out of the way. Drill eight 0.199" (#8 drill) diameter holes at the previously scribed drill position marks.

5. Place the light assembly halves in position on the roof. Insert two mounting pads between the light assembly halves and roof for each mounting bracket leg (see figure 3). Secure the light assembly halves to the roof using eight 1/4" x 3/4" thread-forming screws and tighten securely. The ViewPoint should now be solidly anchored to the roof.

6. Ensure that all fasteners are properly tightened.

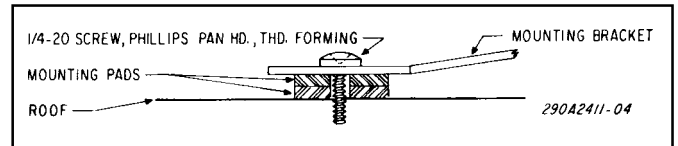


Figure 3.