



ENHANCE YOUR MODBUS TCP



INFROMER100 Modbus Over Ethernet

Low Air Pressure
Sensor



Maintenance
Required
Sensor



Temperature
Exceeded
Sensor

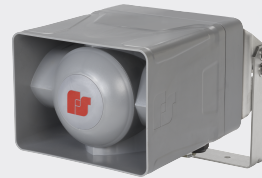


Gas Leak
Sensor



Modbus
TCP

CONTROL



Tone and Voice Message Annunciation

"Warning, air pressure is low"

"Alert, maintenance is required"

"Caution, Temperature is
exceeded at water valve"

"Evacuate, gas leak"

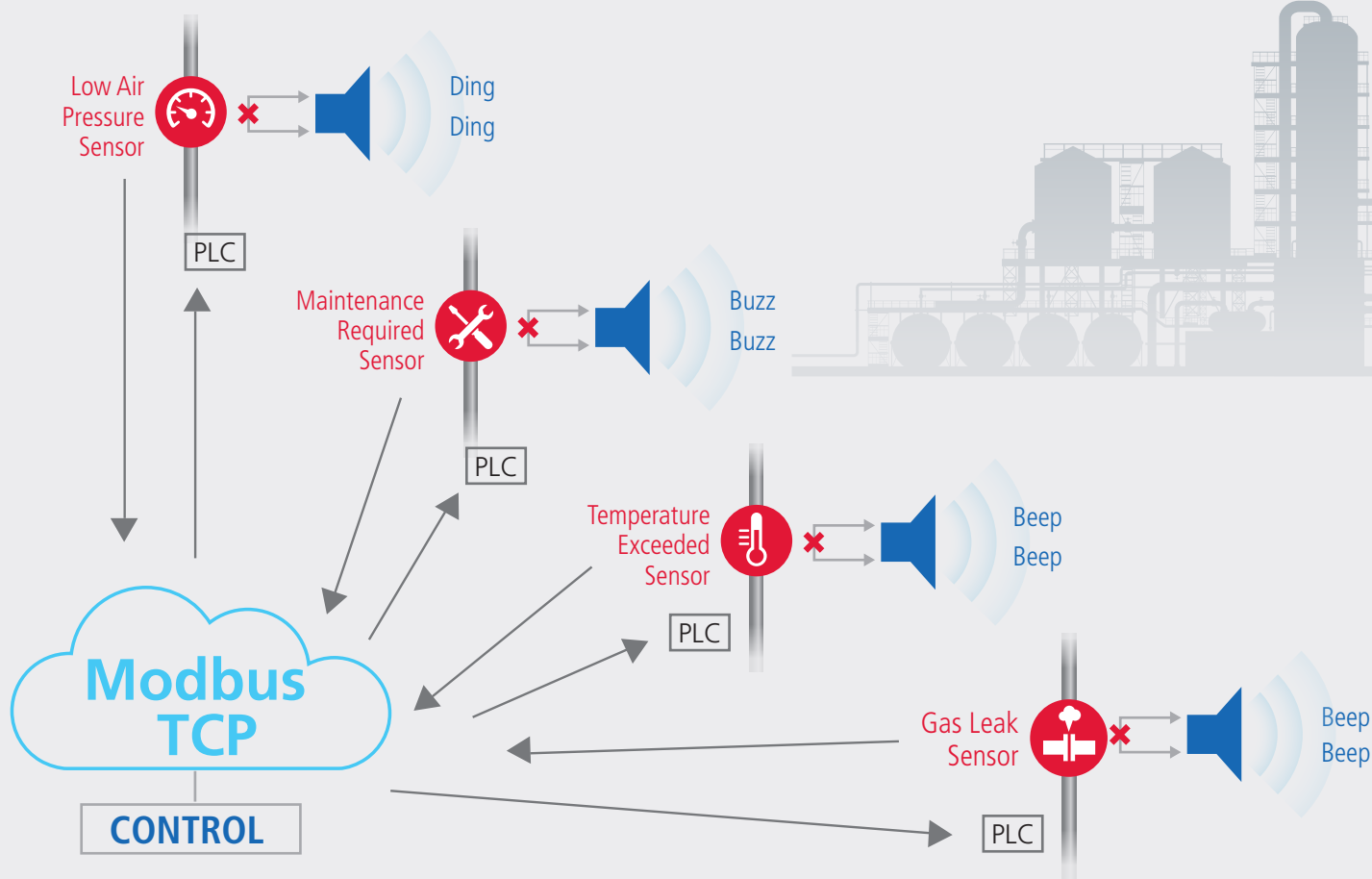
IP100 is designed for indoor/outdoor use and is available in both safe area and HazLoc versions. Up to 4,000 tone or voice messages are easily stored and updated using a removable micro SD card.

The Informer100 Speaker is a 100-watt, IP-enabled indoor and outdoor speaker which can be used as a warning and alert device with both audible and visual indicators. Using the built-in Modbus capability alleviates the expense of additional front-end software and equipment needed to deliver the message.

In today's manufacturing plant, your typical alerting system requires a speaker used with PLC / relays to activate a specific tone alert during an event...

Typical Factory Alerts

- A customer has an application where Modbus TCP is used to activate speakers for audible alerts, typically tones.
- Speakers may only provide 1-3 tones and in many cases do not include voice alerts.
- To activate audible alerts, an expensive PLC/relay is used to activate the speaker.
- A speaker with a direct Modbus TCP interface can provide enhanced voice and tone alerts.



**NEXT
STEPS**



Let us solve your problem. Contact your local Federal Signal Representative for a FREE Site Survey. We'll be happy to come out, review the application and provide a solution proposal and complete bill of materials.

Don't hesitate, contact us today!