

25500520 A0 0219

Safety Message to Installers of Warning Light Equipment

People's lives depend on your proper installation and servicing of Federal Signal products. It is important to read and follow all instructions shipped with this product and the original product. In addition, listed below are some other important safety instructions and precautions you should follow:

- To properly install the lighting system, you must have a good understanding of automotive systems, along with proficiency in the installation and use of safety warning equipment.
- Do not install equipment or route wiring in the deployment path of an airbag.
- If a vehicle seat is temporarily removed, verify with the vehicle manufacturer if the seat needs to be recalibrated for proper airbag deployment.
- You should frequently inspect the light system to ensure that it is operating properly and that it is securely attached to the vehicle.
- When drilling into a vehicle structure, be sure that both sides of the surface are clear of anything that could be damaged.
- Refer to the instructions packed with related products for additional precautions and information.
- File these instructions in a safe place and refer to them when maintaining and/or reinstalling the product.
- Do not stare directly into the lights at a close range or permanent damage to your eyesight may occur.

Failure to follow all safety precautions and instructions may result in property damage, serious injury, or death.

SLB-FRD15ND Mounting Kit

This publication has instructions for using the SLB-FRD15ND Mounting Kit to mount a CN Signalmaster or Latitude lighthouse to the rear window of the Ford F-150.

NOTE: For electrical installation instructions, refer to the installation and maintenance instructions packed with the lighthouse.

Unpacking the Kit

After unpacking the kit, inspect it for damage that may have occurred in transit. If it has been damaged, do not attempt to install or operate it. File a claim immediately with the carrier, stating the extent of damage. Carefully check all envelopes, shipping labels, and tags before removing or destroying them. Ensure that the parts in the Kit Contents List are included in the package. If you are missing any parts, contact Customer Support at 1-800-264-3578, 7 a.m. to 5 p.m., Monday through Friday (CT).

Table 1 Hardware

Description	Part No.	Qty.
BRKT,CNSM/LAT,REAR HEADLINER,F-150	865202785	2
SCREW, #10 TYPE B, 6-LOBE, BLACK	7011246-06	8
1/4-20 X 3/4 HEX CAP SCREW 18-8 SS	7000A311-12	2
1/4-20 NE NYLON INSERT L/N 18-8 SS	7058A010	2
1/4 X 1 1/2 FENDER WASHER STL ZC	7072274A	2
1/4 SAE F/W WASHER 1/16 THK 18-8 SS	7072A024	2

Installing the Brackets

⚠ WARNING

AIRBAG DEPLOYMENT: Do not install equipment or route wiring in the deployment path of an airbag. Failure to observe this warning will reduce the effectiveness of the airbag or potentially dislodge the equipment, causing serious injury or death.

⚠ WARNING

DRILLING PRECAUTIONS: When drilling holes, check the area you are drilling into to be sure you do not damage vehicle components. All drilled holes should be deburred and all sharp edges should be smoothed. All wire routings going through drilled holes should be protected by a grommet or convolute/split loom tubing.

IMPORTANT: Plan all cable routing before the installation.

1. Remove the third brake light according to the vehicle manufacturer’s instructions.
2. Remove the headliner according to the vehicle manufacturer’s instructions.
3. From the bed, install 1/4" bolts with fender washers in the locations shown in Figures 1 and 2.

Figure 1

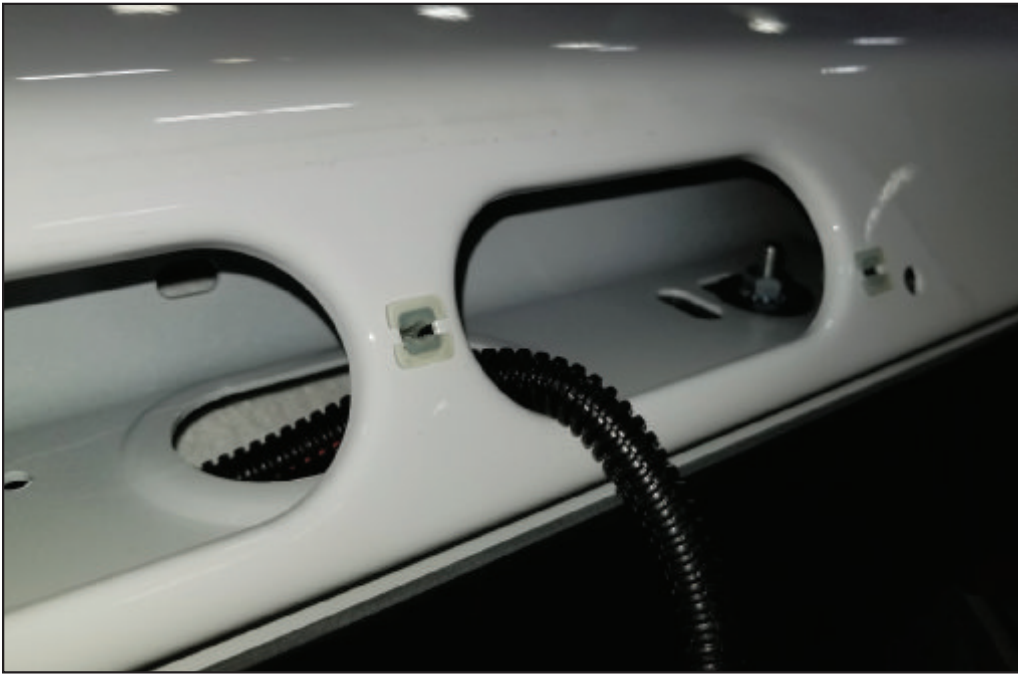
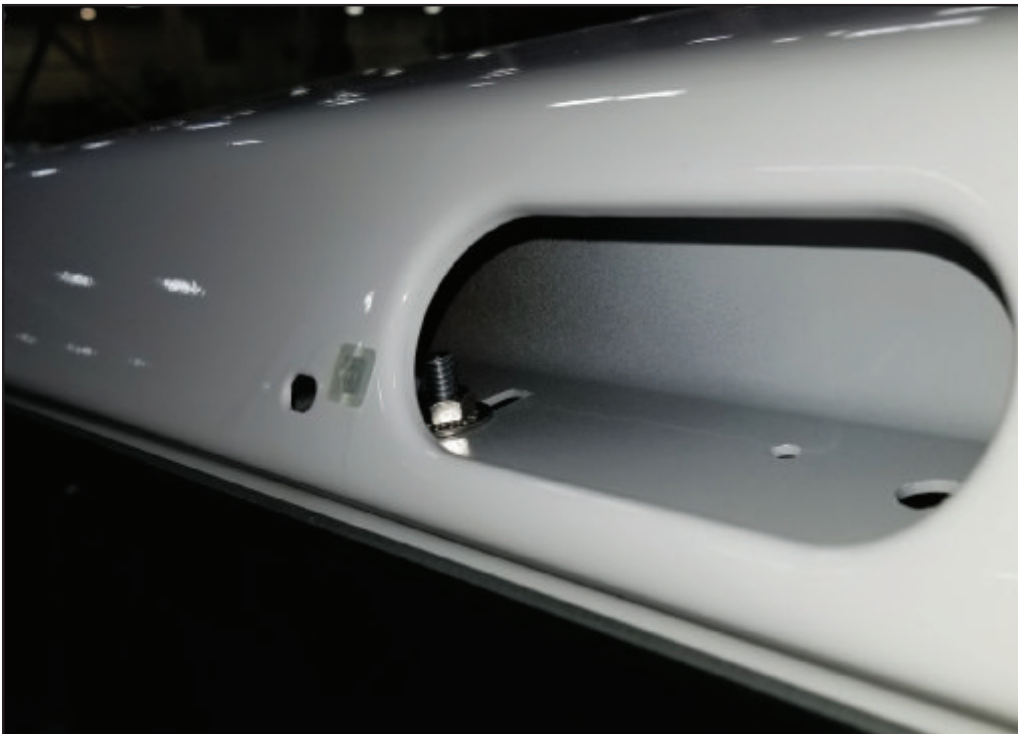


Figure 2



Mounting Instructions for the SLB-FRD15ND

4. From the inside of the vehicle, install the brackets to the bolts with the ¼" lock nuts and flat washers. See Figure 3.

Figure 3



5. Reinstall headliner and third brake light according to vehicle manufacturer's instructions.

6. If installing a CN Signalmaster, install the lighthead to the brackets using the 8 #10 screws supplied with this kit. If installing a Latitude, install the lighthead to the brackets using the carriage bolts, nuts, and washers supplied with the latitude. See Figure 4.

Figure 4



7. Complete the wiring according to the instructions supplied with the lighthead..

⚠ WARNING

LIGHT HAZARD: To be an effective warning device, an emergency warning system produces bright light that can be hazardous to your eyesight when viewed at a close range. Do not stare directly into the lights at a close range or permanent damage to your eyesight may occur.

8. Test the lighthead for proper operation.

Getting Technical Support and Service

For technical support and service, please contact:

Service Department
Federal Signal Corporation
Phone: 1-800-433-9132
Fax: 1-800-343-9706
Email: empserviceinfo@fedsig.com
www.fedsig.com

Getting Repair Service

The Federal Signal factory provides technical assistance with any problems that cannot be handled locally.

Any units returned to Federal Signal for service, inspection, or repair must be accompanied by a Return Material Authorization (RMA). Obtain a RMA from a local Distributor or Manufacturer's Representative.

Provide a brief explanation of the service requested, or the nature of the malfunction.

Address all communications and shipments to the following:

Federal Signal Corporation
Service Department
2645 Federal Signal Drive
University Park, IL 60484-3167

Ordering Replacement Parts

To order replacement parts, call Customer Support at 1-800-264-3578, 7 a.m. to 5 p.m., Monday through Friday (CT) or contact your nearest distributor.



FEDERAL SIGNAL
Safety and Security Systems

2645 Federal Signal Drive
University Park, Illinois 60484-3167

www.fedsig.com

Customer Support

Police/Fire-EMS: 800-264-3578 • +1 708 534-3400

Work Truck: 800-824-0254 • +1 708 534-3400

Technical Support: 800-433-9132 • +1 708 534-3400

© Copyright 2019 Federal Signal Corporation

Ford is a registered trademark of Ford Motor Company.